

AGENDA
SAN ELIJO JOINT POWERS AUTHORITY
MONDAY, MAY 13, 2019 AT 8:30 AM
SAN ELIJO WATER RECLAMATION FACILITY – CONFERENCE ROOM
2695 MANCHESTER AVENUE
CARDIFF BY THE SEA, CALIFORNIA

1. CALL TO ORDER
2. ROLL CALL
3. PLEDGE OF ALLEGIANCE
4. ORAL COMMUNICATIONS (NON-ACTION ITEM)
5. AWARDS AND RECOGNITION
6. * **CONSENT CALENDAR**
7. * APPROVAL OF MINUTES FOR APRIL 15, 2019 MEETING
8. * APPROVAL FOR PAYMENT OF WARRANTS AND MONTHLY INVESTMENT REPORTS
9. * SAN ELIJO WATER RECLAMATION FACILITY TREATED EFFLUENT FLOWS – MONTHLY REPORT
10. * SAN ELIJO JOINT POWERS AUTHORITY RECYCLED WATER PROGRAM – MONTHLY REPORT
11. * SAN ELIJO JOINT POWERS AUTHORITY FISCAL YEAR 2019-20 RECOMMENDED BUDGET UPDATE
12. * ITEMS REMOVED FROM CONSENT CALENDAR

Items on the Consent Calendar are routine matters and there will be no discussion unless an item is removed from the Consent Calendar. Items removed by a "Request to Speak" form from the public will be handled immediately following adoption of the Consent Calendar. Items removed by a Board Member will be handled as directed by the Board.

REGULAR AGENDA

13. **RECEIVE AND FILE RECYCLED WATER EXPANSION PLAN; PARTNERSHIP PROJECT WITH SANTA FE IRRIGATION DISTRICT, SAN DIEGUITO WATER DISTRICT, OLIVENHAIN MUNICIPAL WATER DISTRICT, LEUCADIA WASTEWATER DISTRICT, AND SAN ELIJO JOINT POWERS AUTHORITY**

1. Receive and file the Recycled Water Expansion Plan;
2. Discuss and take action as appropriate.

Staff Reference: General Manager

14. **BUILDING AND SITE IMPROVEMENT PROJECT DISCUSSION**

No action required. For information only. This is a continuing monthly agenda item to discuss the building and site improvement project.

Staff Reference: General Manager

15. **GENERAL MANAGER'S REPORT**

Informational report by the General Manager on items not requiring Board action.

16. **GENERAL COUNSEL'S REPORT**

Informational report by the General Counsel on items not requiring Board action.

17. **BOARD MEMBER COMMENTS**

This item is placed on the agenda to allow individual Board Members to briefly convey information to the Board or public, or to request staff to place a matter on a future agenda and/or report back on any matter. There is no discussion or action taken on comments by Board Members.

18. **CLOSED SESSION**

The Board will adjourn to Closed Session to discuss item(s) identified below. Closed Session is not open to the public; however, an opportunity will be provided at this time if members of the public would like to comment on any item listed below. (Three minute limit.) A closed session may be held at any time during this meeting of the San Elijo Joint Powers Authority for the purposes of discussing potential or pending litigation or other appropriate matters pursuant to the "Ralph M. Brown Act".

Conference with Labor Negotiator; Agency Negotiator: Michael T. Thornton, General Manager; Unrepresented Employees: All Non-Contract Employees pursuant to Gov. Code Section 54957.6.

19. **ADJOURNMENT**

The next regularly scheduled San Elijo Joint Powers Authority Board Meeting will be Monday, June 10, 2019 at 8:30 a.m.

NOTICE:

The San Elijo Joint Powers Authority's open and public meetings meet the protections and prohibitions contained in Section 202 of the Americans With Disabilities Act of 1990 (42 U.S.C Section 12132), and the federal rules and regulations adopted in implementation thereof. Any person with a disability who requires a modification or accommodation, including auxiliary aids or services, in order to participate in a public meeting of the SEJPA Board of Directors may request such modification or accommodation from Michael T. Thornton, General Manager, (760) 753-6203 ext. 72.

The agenda package and materials related to an agenda item submitted after the packet's distribution to the Board is available for public review in the lobby of the SEJPA Administrative Office during normal business hours. Agendas and minutes are available at www.sejpa.org. The SEJPA Board meetings are held on the second Monday of the month, except August.

AFFIDAVIT OF POSTING

I, Michael T. Thornton, Secretary of the San Elijo Joint Powers Authority, hereby certify that I posted, or have caused to be posted, a copy of the foregoing agenda in the following locations:

San Elijo Water Reclamation Facility, 2695 Manchester Avenue, Cardiff, California
City of Encinitas, 505 South Vulcan Avenue, Encinitas, California
City of Solana Beach, 635 South Highway 101, Solana Beach, California

The notice was posted at least 72 hours prior to the meeting, in accordance with Government Code Section 54954.2(a).

Date: May 8, 2019



Michael T. Thornton, P.E.
Secretary / General Manager

SAN ELIJO JOINT POWERS AUTHORITY
MINUTES OF THE REGULAR BOARD MEETING
HELD ON APRIL 15, 2019
AT THE
SAN ELIJO WATER RECLAMATION FACILITY

David Zito, Chair

Jody Hubbard, Vice Chair

A regular meeting of the Board of Directors of the San Elijo Joint Powers Authority (SEJPA) was held Monday, April 15, 2019, at 8:30 a.m., at the San Elijo Water Reclamation Facility at 2695 Manchester Avenue, Cardiff by the Sea, California.

1. CALL TO ORDER

Chair Zito called the meeting to order at 8:30 a.m.

2. ROLL CALL

Directors Present:

David Zito
Jody Hubbard
Kristi Becker
Catherine Blakespear

Directors Absent:

None

Others Present:

General Manager
Director of Finance & Administration
Director of Operations
Project Manager
Administrative Assistant/Board Clerk

Michael Thornton
Paul Kinkel
Chris Trees
Mike Konicke
Jennifer Basco

SEJPA Counsel:

Procopio, Cory, Hargreaves & Savitch

Tracie E. Stender

City of Encinitas:

Director of Public Works

Carl Quiram

City of Solana Beach:

City Manager
Director of Engineering/Public Works

Greg Wade
Mohammad "Mo" Sammak

3. PLEDGE OF ALLEGIANCE

Chair Zito led the Pledge of Allegiance.

4. ORAL COMMUNICATIONS

None

5. AWARDS AND RECOGNITION

None

6. CONSENT CALENDAR

Moved by Board Member Blakespear and seconded by Vice Chair Hubbard to approve the Consent Calendar.

Agenda Item No. 7	Approval of Minutes for the March 11, 2019 Meeting
Agenda Item No. 8	Approval for Payment of Warrants and Monthly Investment Report
Agenda Item No. 9	San Elijo Water Reclamation Facility Treated Effluent Flows – Monthly Report
Agenda Item No. 10	San Elijo Joint Powers Authority Recycled Water Program – Monthly Report

Motion carried with the following vote of approval:

AYES:	Zito, Hubbard, Becker, Blakespear
NOES:	None
ABSENT:	None
ABSTAIN:	None

11. ITEMS REMOVED FROM CONSENT CALENDAR

None

12. PRESENTATION OF THE SAN ELIJO JOINT POWERS AUTHORITY FISCAL YEAR 2019-20 RECOMMENDED BUDGET

Paul Kinkel, Director of Finance and Administration, presented the Fiscal Year (FY) 2019-20 Recommended Budget to the Board of Directors. The budget estimates all expenditures necessary, including capital costs and debt service, to provide wastewater treatment, waste disposal, recycled water, laboratory, ocean outfall, and pump station services. The total FY 2019-20 Recommended Budget is \$11,070,853 consisting of \$6,941,355 of Operating Costs, \$2,457,071 of Debt Service and \$1,672,427 of Capital Costs. The proposed operating budget for all programs will increase by \$504,709. Mr. Kinkel stated that the SEJPA receives revenues from seven primary sources, with the three largest being the City of Encinitas, the City of Solana Beach, and the Recycled Water Program, which are expected to provide \$3,415,946, \$2,814,955, and \$3,161,891, respectively.

It was recommended that the Board of Directors take the Recommended Budget to their respective Cities for review and comment. The budget will then be discussed at the next scheduled Board meeting.

No action required. This memorandum was submitted for information only.

Board Member Blakespear left the meeting at 8:48 a.m.

13. CAPITAL IMPROVEMENT PROGRAM UPDATE

Mike Konicke, Project Manager, provided status updates on the various projects in SEJPA's Capital Improvement Program. The Land Outfall Replacement project was completed in 2018. The Preliminary Treatment Upgrades and Odor Control Upgrades project is substantially complete. Construction on the Building and Site Improvements Project is currently in the design and permitting phase. Encinitas Ranch Recycled Water Expansion is expected to be complete in mid-2019. The SCADA upgrade project, which is expected to be complete by late 2019, includes new hardware, software, programming, equipment installation, system testing, and commissioning. The Solids Treatment Project, a Phase III project, is currently in the pre-design phase.

No action required. This memorandum was submitted for information only.

14. BUILDING AND SITE IMPROVEMENT PROJECT DISCUSSION

No action required. This memorandum was submitted for information only.

15. PROPOSED FY 2019-20 CLASSIFICATION AND SALARY SCHEDULE

General Manager Thornton presented the recommended FY 2019-20 Classification and Salary Schedule to the Board of Directors. Mr. Thornton informed the Board of Directors that the completed classification and compensation analysis included the review of 20 SEJPA employee positions (or classifications) collected from 16 cities and agencies. The review of the base salary data suggests that SEJPA is competitive in the labor market with about 35% of its positions, with the remaining 65% drifting to varying degrees below the median salary data. In preparing the Classification and Salary Schedule, consideration was given to maintaining the agency's competitiveness to attract and retain employees, as well as to effectively manage personnel costs, and to develop a well-designed organizational structure. The proposed adjustments have a potential impact of less than \$70,000.

Moved by Vice Chair Hubbard and seconded by Board Member Becker to:

1. Approve the proposed FY 2019-20 Classification and Compensation Schedule.

Motion carried with the following vote of approval:

AYES: Zito, Hubbard, Becker
NOES None
ABSENT: Blakespear
ABSTAIN: None

16. DEVELOPMENT OF NEW LABOR AGREEMENT

General Manager Thornton informed the Board of Directors that the SEJPA and its employees are operating under a 3-year labor agreement that expires on June 30, 2019. The employees are a non-unionized workforce with informal representation. The General Manager, who is working on behalf of the Board of Directors, stated that he has held several meetings with the employees to discuss the process in reaching a mutually acceptable labor agreement and to identify key elements that the employees are seeking. Staff is seeking to extend the current labor agreement by 3 years with proposed salary scale adjustments. The intent of the proposed salary scale adjustments is to increase the top of the range of each classification, which would assist SEJPA in retaining its staff and maintaining its competitiveness in the labor market. The requested salary scale increases are 3% in 2020 and 1% to 3% in 2021 and 2022 based on the Consumer Price Index for urban wage earners in San Diego. The proposed FY 2019-20 Budget could accommodate this labor proposal without modification.

No action required. This memorandum was submitted for information only.

17. GENERAL MANAGER'S REPORT

The General Manager informed the Board of Directors that Senate Majority Leader Bob Hertzberg (D-Van Nuys) and Senator Scott Wiener (D-San Francisco) recently introduced Senate Bill 332, the Local Water Reliability Act. SB 332 promotes the development of local water supplies by requiring wastewater treatment facilities to reduce the volume of treated wastewater discharged annually. Mr. Thornton stated that WaterReuse California is planning to engage Hertzberg to propose ideas to strengthen the bill. Next the General Manager stated that the Potable Reuse Study with SEJPA, San Dieguito Water District, Santa Fe Irrigation District, Olivenhain Municipal Water District, and Leucadia Wastewater District, has been completed and will be presented at the next Board meeting. Finally, Mr. Thornton stated that he will be in Washington D.C. at the end of April to meet with congressional representatives for water reuse funding support.

18. GENERAL COUNSEL'S REPORT

None

19. BOARD MEMBER COMMENTS

None

21. CLOSED SESSION

None

21. ADJOURNMENT

The meeting adjourned at 9:51 a.m. The next Board of Directors meeting will be held on Monday, May 13, 2019 at 8:30 a.m.

Respectfully submitted,

A handwritten signature in black ink, appearing to read 'M. Thornton', written over a horizontal line.

Michael T. Thornton, P.E.
General Manager

SAN ELIJO JOINT POWERS AUTHORITY**PAYMENT OF WARRANTS****19-05****For the Months of March and April 2019**

Warrant #	Vendor Name	G/L Account	Warrant Description	Amount
37012	A-B-CPR & First Aid Training	Training - Safety	CPR and first aid training	980.00
37013	Ag Tech, LLC	Services - Biosolids Hauling	Biosolids hauling - March	16,966.72
37014	APGN Inc.	Services - Maintenance	Turbo blowers	8,220.00
37015	Arbor West Tree Surgeons, Inc.	Services - Landscape	Tree removal and stump grinding	2,685.00
37016	AT&T	Services - Alarm	Alarm service - April	399.60
37017	Atlas Pumping Service Inc.	Services - Grease & Scum	Grease & scum pumping, grit & screenings, roll-off	3,719.32
37018	Boot World, Inc.	Uniforms - Boots	Safety boots	174.51
37019	Complete Office	Supplies - Office	Office supplies	147.42
37020	Corodata	Rent	Record storage - March	95.09
37021	County of San Diego	Fees - Permits	Facility permit	612.00
37022	D&H Water Systems	Services - Maintenance	Semi annual service	2,381.61
37023	Duperon Corporation	Equipment Rental/Lease	Washer compactor - April	1,616.25
37024	EDCO Waste & Recycling Service	Utilities - Trash	March	242.75
37025	Encina Wastewater Authority	Service - EWA Support	Resource sharing - HR and safety	1,053.02
37026	National Filter Media	Repair Parts Expense	Conversion trailer, blades	575.03
37027	Frankie Abeyta	Seminars/Education	Water treatment course	160.00
37028	FRS Environmental	Services - Maintenance	Part washer service - 04/01/19 - 06/23/19	249.05
37029	Jose Garcia	Dues & Memberships	Membership and mechanical certificate	388.00
37030	GC Pivotal LLC	Utilities - Internet	T-1 service - May	355.24
37031	Hach Company	Shop Tools and Equipment	Tester for pH/Cond/TDS/Salinity; sensors, probes	15,891.73
37032	Harrington Industrial Plastics	Repair Parts Expense	Plugs	358.60
37033	Michael Henke	Dues & Memberships	Certificates - Electrical II, lab, and mechanical	281.00
37034	Kemira Water Solutions, Inc.	Supplies - Chemicals	Ferric chloride	5,418.66
37035	Lee Michael Konicke	Seminars/Education	DBIA workshop and membership	1,599.00
37036	McMaster-Carr Supply Co.	Repair Parts Expense	Strut channel parts, floor drain grate, fuses, panel	1,870.03
37037	Olivenhain Municipal Water District	Services - Contractors	Pipeline rental payment - March	2,227.50
37038	OneSource Distributors, Inc.	Repair Parts Expense	Rail snap, relay, and output	590.30
37039	PCL Construction Services	Services - Contractors	Design services	23,162.00
37040	Preferred Benefit Insurance	Dental/Vision	Vision - April	314.50
37041	ProBuild Company, LLC	Supplies - Safety	Repairs parts and supplies	1,141.64
37042	Santa Fe Irrigation District	Utilities - Water	Recycled water	1,342.72
37043	San Dieguito Water District	Utilities - Water	Recycled water	610.84
37044	San Dieguito Water District	Utilities - Water	Recycled water	804.00
37045	Smart & Final	Supplies - Office	Kitchen supplies	163.18
37046	Terminix Processing Center	Services - Maintenance	Pest control	384.00
37047	Christopher A. Trees	Subsistence - Travel	WaterReuse conference	306.54
37048	Unifirst Corporation	Services - Uniforms	Uniform service	109.94
37049	UPS	Postage/Shipping	Shipping fee	7.64
37050	Underground Service Alert/SC	Services - Alarm	Dig alert for March	239.21
37051	USA Bluebook	Shop Tools and Equip.	CorePro Sr 5' sampler	129.73
37052	USP Technologies	Supplies - Chemicals	Calcium nitrate; feed systems	12,560.47
37053	Vantagepoint Transfer Agents	EE Deduction Benefits	ICMA - 457	6,418.47
37054	Vantagepoint Transfer Agents	ICMA Retirement	ICMA - 401a	3,469.41
37055	Volt Management Corp	Services - Intern Program	Periods ending - 03/22/19 and 03/29/19	1,333.08
On-line 180	Chevron & Texaco Business Card	Fuel	March and April fleet fuel	410.76
On-line 181	Public Employees- Retirement	Retirement Plan - PERS	Retirement - 03/23/19 - 04/05/19	13,352.95
On-line 182	Board of Equalization	Accrued Sales Tax Payable	1st Qtr 2019	409.00
On-line 183	WEX Bank	Fuel	March	528.69
37056	A-1 Crane San Diego	Equipment Rental/Lease	Remove and replace pump and screw	1,080.00
37057	A-Check Global	Preemployment Screening	New employee verification	12.00
37058	Affordable Pipeline Services	Services - Maintenance	A-basin sediment removal	2,250.00
37059	Aflac	EE Deduction Benefits	Aflac - April	595.08
37060	Ametek Brookfield	Services - Maintenance	Calibration of gas meter	726.00
37061	Aquatic Bioassay	Services - Laboratory	Toxicity testing - Kelp germination	1,050.00
37062	Arbor West Tree Surgeons, Inc.	Services - Landscape	Remove and grind stumps, tree trimming	5,775.00
37063	AT&T	Utilities - Telephone	Phone service - 03/13/2019 - 04/12/2019	398.11
37064	Atlas Pumping Service Inc.	Services - Grease & Scum	Grease and scum pumping; grit & screenings roll-off	2,212.88
37065	Black & Veatch	Services - Management	Construction management for capital projects	52,791.48
37066	Boot World, Inc.	Uniforms - Boots	Safety boots	185.00
37067	Brenntag Pacific, Inc.	Supplies - Chemicals	Sodium hydroxide	1,254.65
37068	Burtech Pipeline, Inc.	Services - Contractors	Encinitas Ranch recycled water project	256,068.41

SAN ELIJO JOINT POWERS AUTHORITY**PAYMENT OF WARRANTS****19-05****For the Months of March and April 2019**

Warrant #	Vendor Name	G/L Account	Warrant Description	Amount
37069	Carollo Engineers	Services - Engineering	SCADA upgrades project	1,500.30
37070	Coast Waste Management, Inc.	Services - Grit & Screenings	Roll-off 10 yard bin	1,560.46
37071	Complete Office	Supplies - Office	Office supplies	96.18
37072	Carrie Cook	CSRMA Health and Wellness	Health and wellness	60.00
37073	County of San Diego	Fees - Permits	Renewal period - 05/31/19 - 05/31/20	469.00
37074	D&H Water Systems	Supplies - Chemicals	Acetate buffer	487.55
37075	County of San Diego	Fees - Permits	Facility permit	153.00
37076	Dudek & Associates	Services - Professional	Engineering support for capital projects	11,372.70
37077	Encina Wastewater Authority	Services - Laboratory	Enterococcus testing	2,490.00
37078	City of Encinitas	Service - IT Support	Admin network - April	78.75
37079	National Filter Media	Repair Parts Expense	Blades - Belt press	456.03
37080	Forte of San Diego	Services - Janitorial	May	1,000.00
37081	Global Power Group Inc.	Services - Maintenance	PM service generator	1,200.00
37082	Golden Bell Products	Supplies - Chemicals	Lift station degreaser	452.55
37083	Grainger, Inc.	Supplies - Safety	Slotted shims, full body harness, safety cabinet	1,361.82
37084	Golden State Overnight	Postage/Shipping	Water samples	119.20
37085	Hardy Diagnostics	Supplies - Lab	Laboratory supplies	2,800.63
37086	Harrington Industrial Plastics	Repair Parts Expense	Seal top	808.97
37087	James, Cooke & Hobson, Inc.	Repair Parts Expense	Temperature controller and display	942.82
37088	Kennedy/Jenks Consultants	Services - Engineering	CMAR-Owner representative; utility base mapping	4,344.30
37089	Kimley-Horn & Associates, Inc.	Services - Professional	Civil engineering and environmental	204,211.40
37090	Casey Larsen	Subsistence - Travel/Rm & Bd	CWEA annual conference	165.30
37091	Lee's Lock & Safe	Services - Maintenance	Master padlocks for pump stations	240.28
37092	McMaster-Carr Supply Co.	Repair Parts Expense	Floor mount, wire duct, steel rail	341.65
37093	MetLife - Group Benefits	Dental/Vision	Dental - May	1,935.56
37094	Olin Corp - Chlor Alkali	Supplies - Chemicals	Sodium hypochlorite	3,606.91
37095	Olivenhain Municipal Water District	Services - Professional	RMC Grant - Admin costs	1,211.34
37096	Olivenhain Municipal Water District	Services - Professional	Woodard & Curran LRP - Application costs	3,795.68
37097	Olivenhain Municipal Water District	Services - Professional	RMC and Woodard & Curran - WIIN costs	2,517.14
37098	OneSource Distributors, Inc.	Repair Parts Expense	Slot wiring duct, smoke detector, digital module	11,053.30
37099	Pacific Green Landscape	Services - Landscape	April	2,625.00
37100	Pacific Pipeline Supply	Repair Parts Expense	Gaskets	213.78
37101	PCL Construction Services	Services - Contractors	Construction services, building project	23,162.00
37102	Procopio Cory Hargreaves	Services - Legal	General; labor & employment - March	1,202.50
37103	ReadyRefresh	Supplies - Lab	Kitchen and lab supplies	397.10
37104	Roesling Nakamura Terada Architects	Services - Professional	Building design	6,850.50
37105	RSF Security Systems	Services - Alarm	LCD keypad, back-up battery, motion detectors	5,447.00
37106	Rusty Wallis, Inc.	Services - Maintenance	Water softener, tank service, and salt bags	130.86
37107	Safe Hearing America	Services - Medical	Mobile hearing testing	918.50
37108	Santa Fe Irrigation District	SFID Distribution Pipeline	Pipeline purchase payment - March	475.21
37109	San Diego Business Journal	Subscriptions	Subscription	59.00
37110	Siemens Industry, Inc.	Repair Parts Expense	Multi-ranger level transmitter	1,396.44
37111	Stellar Scientific, LLC	Capital Outlay	Digital incubator	1,920.64
37112	Sulzer	Repair Parts Expense	Inverter, voltage supply, motor	2,013.49
37113	Sunbelt Rentals	Equipment Rental/Lease	Loader - Belt press conveyance system	2,917.33
37114	Test America	Services - Laboratory	Testing water samples	3,490.50
37115	Michael Thornton	Subsistence - Travel/Rm & Bd	DBIA and WateReuse conferences and meetings	1,809.53
37116	Technology Integration Group	Services - Maintenance	Copier service	160.26
37117	Toray Membrane USA	Capital Outlay	Reverse osmosis membranes	45,944.00
37118	Christopher A. Trees	Subsistence - Travel/Rm & Bd	CWEA conference	483.93
37119	U.S. CAD	Licenses	Bluebeam Revu eXtreme software	1,299.00
37120	Unifirst Corporation	Services - Uniforms	Uniform service	327.08
37121	USA Bluebook	Supplies - Lab	Laboratory supplies	587.17
37122	Vallecitos Water District	Prepaid - Other	Employee Assistance Program	677.88
37123	Vantagepoint Transfer Agents	EE Deduction Benefits	ICMA - 457	6,427.44
37124	Vantagepoint Transfer Agents	ICMA Retirement	ICMA - 401a	3,472.83
37125	Verizon Wireless	Utilities - Telephone	Cell modem service - 03/11/19 - 04/10/19	343.32
37126	Verizon Wireless	Utilities - Telephone	Cell phone - 03/08/19 - 04/07/19	693.27
37127	Volt Management Corp	Services - Intern Program	Periods ending - 04/05/19, 04/12/19, 04/19/19	3,621.47
37128	VWR International, Inc.	Supplies - Lab	Laboratory supplies	883.58
37129	WageWorks	Payroll Processing Fees	Admin and compliance fee - March	123.50

SAN ELIJO JOINT POWERS AUTHORITY**PAYMENT OF WARRANTS****19-05****For the Months of March and April 2019**

Warrant #	Vendor Name	G/L Account	Warrant Description	Amount
37130	Water Systems Consulting, Inc.	Services - Professional	Public outreach, communications	3,251.25
37131	Watson Bros. Inc.	Services - Maintenance	Mettler balance calibration	360.00
37132	WorkPartners Occupational	Services - Medical	Medical service contract	35.00
On-line 184	BankCard Center	Supplies - Office	Security, parts, and supplies	3,928.71
On-line 185	Chevron & Texaco Business Card	Fuel	April	269.20
On-line 186	P.E.R.S.	Medical Insurance - PERS	Health - May	22,959.48
On-line 187	Public Employees- Retirement	Retirement Plan - PERS	Retirement - 04/06/19 - 04/19/19	13,361.22
On-line 188	San Diego Gas & Electric	Utilities - Gas & Electric	Gas and electric - 03/06/19 - 04/04/19	51,539.20
On-line 189	Sun Life Financial	Life Insurance/Disability	Life and disability insurance - May	1,679.31
	San Elijo Payroll Account	Payroll	Payroll - 04/12/2019	93,008.68
	San Elijo Payroll Account	Payroll	Payroll - 04/26/2019	77,815.37
				<u><u>\$1,109,969.16</u></u>

SAN ELIJO JOINT POWERS AUTHORITY

PAYMENT OF WARRANTS SUMMARY

**For the Months of March and April 2019
As of May 2, 2019**

PAYMENT OF WARRANTS	\$ 1,109,969.16
Reference Number	19-05

I hereby certify that the demands listed and covered by warrants are correct and just to the best of my knowledge, and that the money is available in the proper funds to pay these demands. The cash flows of the SEJPA, including the Member Agency commitment in their operating budgets to support the operations of the SEJPA, are expected to be adequate to meet the SEJPA's obligations over the next six months. I also certify that the SEJPA's investment portfolio complies with the SEJPA's investment policy.



Paul F. Kinkel
Director of Finance & Administration

STATEMENT OF FUNDS AVAILABLE FOR PAYMENT OF WARRANTS
AND INVESTMENT INFORMATION
As of May 2, 2019

FUNDS ON DEPOSIT WITH	AMOUNT
LOCAL AGENCY INVESTMENT FUND	
<i>(MARCH 2019 YIELD 2.436%)</i>	
RESTRICTED SRF RESERVE	\$ 630,000.00
UNRESTRICTED DEPOSITS	\$ 9,460,443.29
CALIFORNIA BANK AND TRUST	
<i>(MARCH 2019 YIELD 0.01%)</i>	
REGULAR CHECKING	\$ 206,144.47
PAYROLL CHECKING	\$ 5,000.00
UNION BANK - TRUSTEE (BOND FUNDS)	
BLACKROCK	\$ 395,323.63
<i>(MARCH 2019 YIELD 2.30%)</i>	
LAIF	\$ 15,161,530.24
<i>(MARCH 2019 YIELD 2.436%)</i>	
TOTAL RESOURCES	<u>\$ 25,858,441.63</u>

SAN ELIJO JOINT POWERS AUTHORITY
MEMORANDUM

May 13, 2019

TO: Board of Directors
San Elijo Joint Powers Authority

FROM: General Manager

SUBJECT: SAN ELIJO WATER RECLAMATION FACILITY TREATED EFFLUENT FLOWS
– MONTHLY REPORT

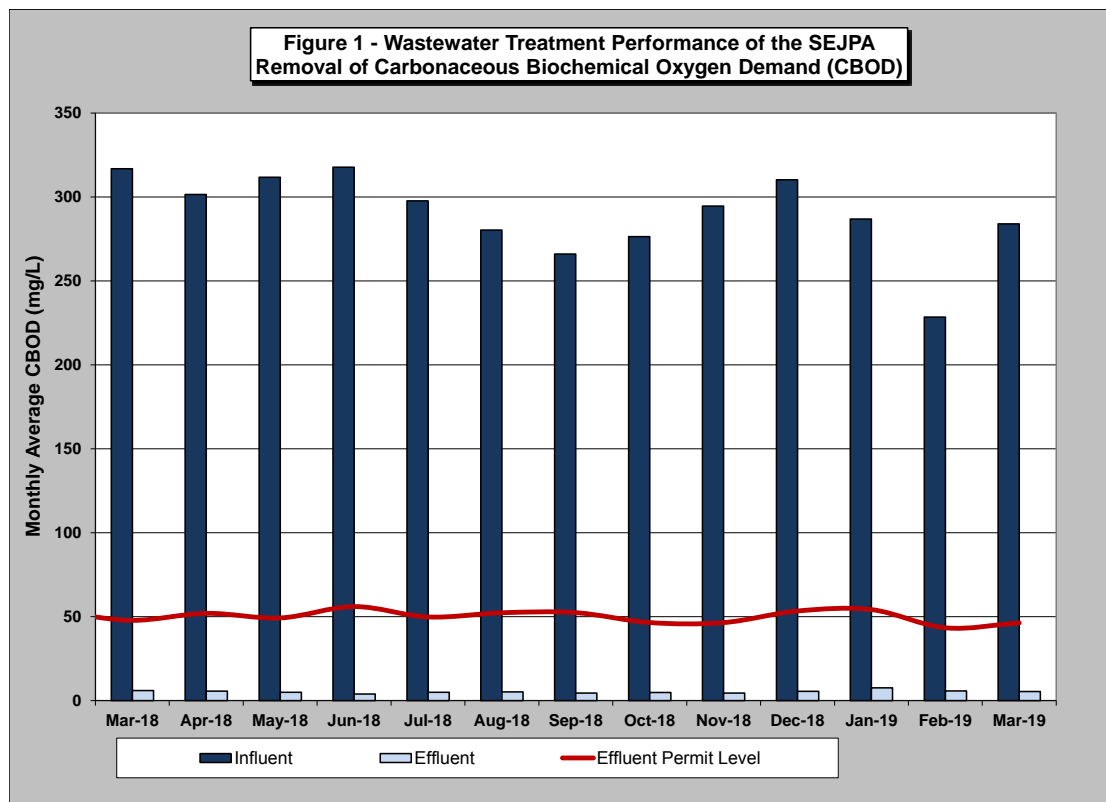
RECOMMENDATION

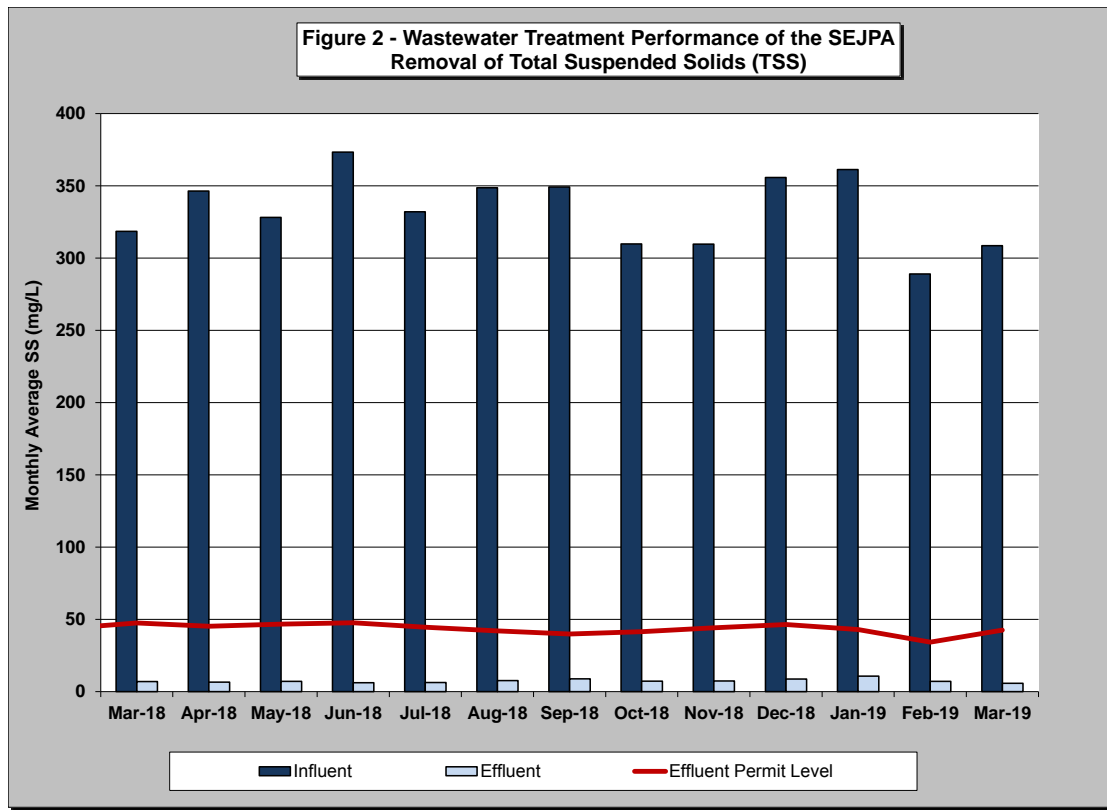
No action required. This memorandum is submitted for information only.

DISCUSSION

Monthly Treatment Plant Performance and Evaluation

Wastewater treatment for the San Elijo Joint Powers Authority (SEJPA) met all National Pollutant Discharge Elimination System (NPDES) ocean effluent limitation requirements for the month of March 2019. The primary indicators of treatment performance include the removal of Carbonaceous Biochemical Oxygen Demand (CBOD) and Total Suspended Solids (TSS). The SEJPA is required to remove a minimum of 85 percent of the CBOD and TSS from the wastewater. Treatment levels for CBOD and TSS were both 98.1 percent removal (as shown in Figure 1 and Figure 2).





Member Agency Flows

Presented below are the influent and effluent flows for the month of March. Average daily influent flows were recorded for each Member Agency. Total effluent flow was calculated for the San Elijo Water Reclamation Facility.

	March	
	<u>Influent (mgd)</u>	<u>Effluent (mgd)*</u>
Cardiff Sanitary Division	1.200	0.956
City of Solana Beach	0.908	0.724
Rancho Santa Fe SID	0.149	0.119
City of Del Mar	0.340	0.271
Total San Elijo WRF Flow	2.597	2.070

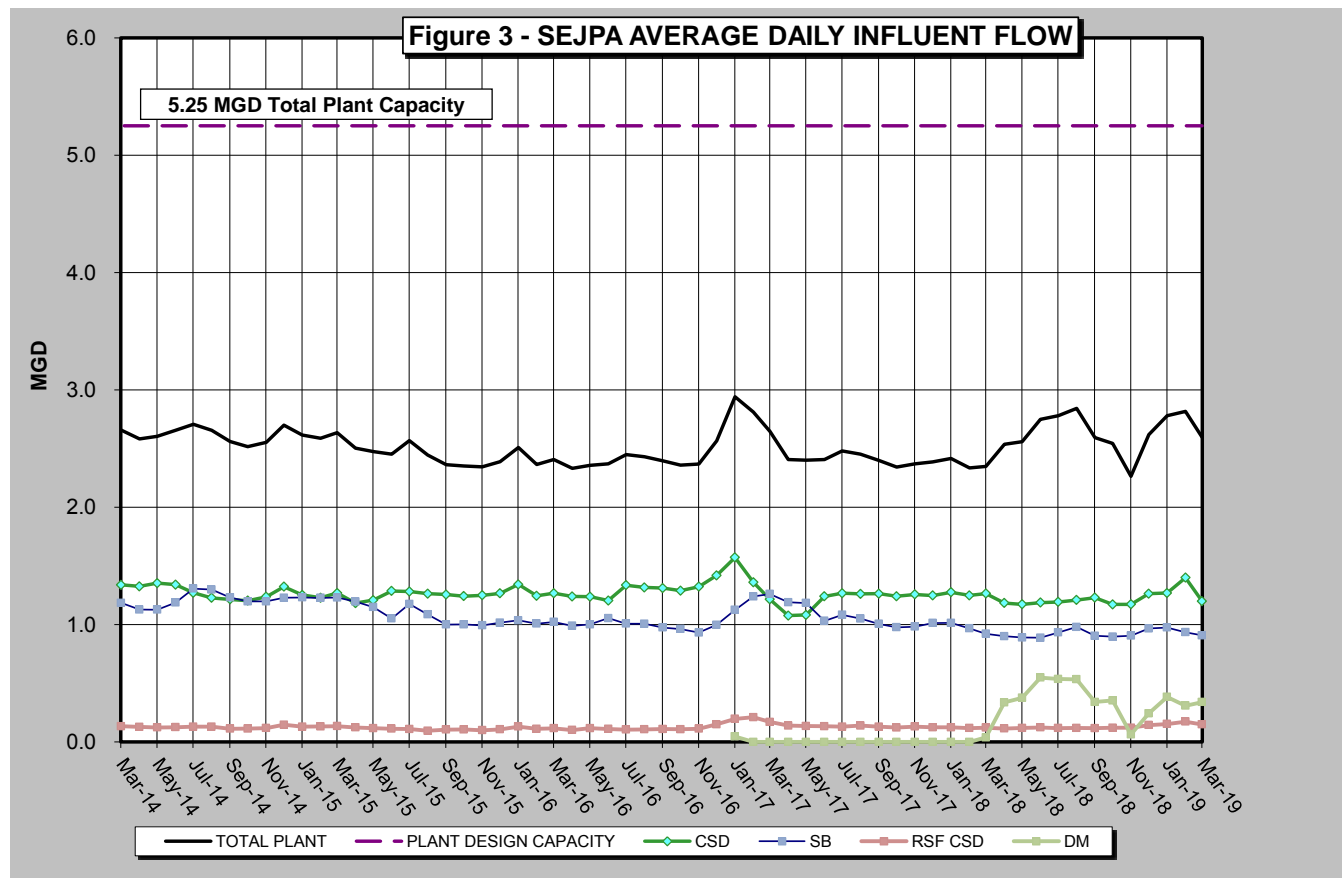
* Effluent is calculated by subtracting the recycled water production from the influent wastewater.

Table 1 (below) presents the historical average, maximum, and unit influent and effluent flow rates per month for each of the Member Agencies during the past 5 years. It also presents the number of connected Equivalent Dwelling Units (EDUs) for each of the Member Agencies during this same time period.

TABLE 1 - SAN ELIJO WATER RECLAMATION FACILITY MONTHLY REPORT - FLOWS AND EDUS

MONTH	AVERAGE DAILY INFLUENT FLOW RATE (MGD)					AVERAGE DAILY EFFLUENT FLOW RATE (MGD)					CONNECTED EDUs					AVERAGE UNIT INFLUENT FLOW RATE (GAL/EDU/DAY)							
	CSD	RSF	CSD	SB	DM	TOTAL PLANT	CSD	RSF	CSD	SB	DM	TOTAL PLANT	CSD	RSF	CSD	SB	DM	TOTAL PLANT	CSD	RSF	SB	DM	TOTAL PLANT
Jan-14	1.322	0.135	1.194			2.651	0.851	0.087	0.768			1.706	8,318	495	7,728			16,541	159	273	155		160
Feb-14	1.314	0.127	1.172			2.613	0.954	0.093	0.851			1.898	8,323	495	7,728			16,546	158	257	152		158
Mar-14	1.339	0.134	1.185			2.658	0.858	0.086	0.760			1.704	8,324	496	7,728			16,548	161	270	153		161
Apr-14	1.326	0.128	1.128			2.582	0.449	0.043	0.382			0.874	8,328	498	7,728			16,554	159	257	146		156
May-14	1.353	0.124	1.127			2.604	0.159	0.015	0.132			0.306	8,333	498	7,728			16,559	162	249	146		157
Jun-14	1.341	0.126	1.188			2.655	0.207	0.020	0.183			0.410	8,333	498	7,728			16,559	161	253	154		160
Jul-14	1.271	0.130	1.307			2.708	0.232	0.024	0.239			0.495	8,338	499	7,728			16,565	152	261	169		163
Aug-14	1.228	0.130	1.298			2.656	0.227	0.024	0.239			0.490	8,345	500	7,728			16,573	147	260	168		160
Sep-14	1.215	0.113	1.232			2.560	0.211	0.019	0.214			0.444	8,351	500	7,728			16,579	145	226	159		154
Oct-14	1.204	0.114	1.198			2.516	0.394	0.038	0.392			0.824	8,353	500	7,728			16,581	144	228	155		152
Nov-14	1.237	0.118	1.198			2.553	0.667	0.063	0.646			1.376	8,354	502	7,728			16,584	148	235	155		154
Dec-14	1.323	0.147	1.229			2.699	1.163	0.129	1.081			2.373	8,355	502	7,728			16,585	158	293	159		163
Jan-15	1.253	0.130	1.232			2.615	0.984	0.102	0.967			2.053	8,359	503	7,977			16,838	150	259	154		155
Feb-15	1.229	0.132	1.228			2.589	0.757	0.081	0.757			1.595	8,361	504	7,977			16,841	147	262	154		154
Mar-15	1.269	0.135	1.231			2.635	0.583	0.062	0.566			1.211	8,365	504	7,977			16,846	152	268	154		156
Apr-15	1.183	0.124	1.196			2.503	0.350	0.036	0.354			0.740	8,366	504	7,977			16,847	141	246	150		149
May-15	1.209	0.117	1.149			2.475	0.545	0.053	0.518			1.116	8,367	505	7,977			16,848	144	232	144		147
Jun-15	1.287	0.113	1.052			2.452	0.362	0.032	0.296			0.690	8,369	506	7,977			16,852	154	224	132		146
Jul-15	1.282	0.110	1.176			2.568	0.392	0.034	0.359			0.785	8,370	510	8,003			16,883	153	216	147		152
Aug-15	1.264	0.095	1.087			2.446	0.315	0.023	0.271			0.609	8,371	510	8,003			16,884	151	186	136		145
Sep-15	1.256	0.105	1.001			2.362	0.457	0.038	0.364			0.859	8,372	511	8,003			16,885	150	206	125		140
Oct-15	1.243	0.106	1.002			2.351	0.681	0.058	0.549			1.288	8,373	511	8,003			16,886	148	208	125		139
Nov-15	1.250	0.100	0.994			2.344	0.792	0.063	0.630			1.485	8,376	511	8,003			16,889	149	196	124		139
Dec-15	1.266	0.107	1.016			2.389	0.971	0.082	0.780			1.833	8,377	511	8,003			16,891	151	210	127		141
Jan-16	1.342	0.131	1.037			2.510	1.189	0.116	0.918			2.223	8,380	511	8,003			16,894	160	257	130		149
Feb-16	1.245	0.112	1.008			2.365	0.780	0.070	0.631			1.481	8,383	512	8,003			16,897	149	219	126		140
Mar-16	1.267	0.116	1.023			2.406	0.763	0.070	0.616			1.449	8,388	512	8,003			16,903	151	227	128		142
Apr-16	1.240	0.102	0.990			2.332	0.675	0.055	0.539			1.269	8,389	512	8,003			16,904	148	199	124		138
May-16	1.238	0.117	1.002			2.357	0.505	0.048	0.409			0.962	8,389	512	8,003			16,904	148	229	125		139
Jun-16	1.205	0.111	1.055			2.371	0.362	0.033	0.317			0.712	8,390	514	8,003			16,907	144	216	132		140
Jul-16	1.336	0.105	1.008			2.449	0.586	0.046	0.442			1.074	8,392	514	8,020			16,926	159	204	126		145
Aug-16	1.317	0.107	1.007			2.431	0.647	0.053	0.495			1.195	8,393	516	8,020			16,929	157	207	126		144
Sep-16	1.311	0.110	0.975			2.396	0.601	0.050	0.447			1.098	8,394	516	8,020			16,930	156	213	122		142
Oct-16	1.289	0.108	0.962			2.359	0.521	0.043	0.389			0.953	8,397	517	8,020			16,933	154	209	120		139
Nov-16	1.323	0.113	0.932			2.368	0.730	0.062	0.514			1.306	8,403	517	8,020			16,940	157	219	116		140
Dec-16	1.419	0.150	0.998			2.567	1.179	0.125	0.829			2.133	8,406	549	8,020			16,975	169	273	124		151
Jan-17	1.572	0.197	1.125	0.047		2.941	1.489	0.186	1.066	0.045		2.786	8,409	549	8,020	1,716		18,694	187	359	140	142	157
Feb-17	1.361	0.211	1.240	0.000		2.812	1.236	0.192	1.126	0.000		2.554	8,409	549	8,020	1,716		18,694	162	384	155	0	166
Mar-17	1.215	0.170	1.261	0.000		2.646	0.856	0.120	0.889	0.000		1.865	8,413	550	8,020	1,716		18,698	144	309	157	0	156
Apr-17	1.077	0.139	1.190	0.000		2.406	0.841	0.108	0.929	0.000		1.878	8,414	551	8,020	1,716		18,700	128	252	148	0	142
May-17	1.082	0.136	1.184	0.000		2.402	0.842	0.106	0.922	0.000		1.870	8,416	551	8,049	1,716		18,732	129	247	147	0	141
Jun-17	1.241	0.134	1.032	0.000		2.407	0.980	0.106	0.815	0.000		1.901	8,420	551	8,049	1,716		18,737	147	243	128	0	141
Jul-17	1.267	0.130	1.083	0.000		2.480	0.802	0.082	0.685	0.000		1.569	8,421	551	8,061	1,716		18,749	150	236	134	0	146
Aug-17	1.262	0.139	1.051	0.000		2.452	0.852	0.094	0.709	0.000		1.655	8,423	553	8,061	1,716		18,753	150	251	130	0	144
Sep-17	1.264	0.130	1.006	0.000		2.400	0.866	0.089	0.689	0.000		1.644	8,427	555	8,061	1,716		18,759	150	234	125	0	141
Oct-17	1.242	0.123	0.977	0.000		2.342	0.543	0.053	0.427	0.000		1.023	8,431	555	8,061	1,716		18,763	147	222	121	0	137
Nov-17	1.257	0.131	0.983	0.000		2.371	0.661	0.069	0.517	0.000		1.247	8,431	554	8,061	1,716		18,762	149	237	122	0	139
Dec-17	1.248	0.125	1.014	0.000		2.387	0.693	0.070	0.563	0.000		1.326	8,431	554	8,061	1,716		18,762	148	226	126	0	140
Jan-18	1.276	0.125	1.015	0.000		2.416	0.886	0.087	0.705	0.000		1.678	8,435	555	8,061	1,716		18,767	151	225	126	0	142
Feb-18	1.249	0.118	0.968	0.000		2.335	0.601	0.056	0.466	0.000		1.123	8,441	555	8,061	1,716		18,773	148	213	120	0	137
Mar-18	1.265	0.122	0.922	0.039		2.348	0.857	0.083	0.625	0.026		1.591	8,451	555	8,061	1,716		18,782	150	220	114	149	125
Apr-18	1.184	0.115	0.901	0.337		2.537	0.627	0.061	0.477	0.179		1.344	8,451	559	8,061	1,716		18,786	140	206	112	129	135
May-18	1.173	0.119	0.890	0.376		2.558	0.566	0.057	0.430	0.182		1.235	8,461	562	8,061	1,716		18,799	139	212	110	144	136
Jun-18	1.188	0.124	0.888	0.549		2.749	0.557	0.058	0.417	0.258		1.290	8,466	562	8,061	1,716		18,804	140	221	110	210	146
Jul-18	1.193	0.118	0.933	0.537		2.781	0.619	0.061	0.484	0.278		1.442	8,478	562	8,083	2,611		19,733	141	210	115	206	141
Aug-18	1.210	0.119	0.980	0.534		2.843	0.686	0.067	0.555	0.303		1.611	8,481	563	8,083	2,611		19,737	143	212	121	205	144
Sep-18	1.230	0.117	0.905	0.341		2.593	0.677	0.064	0.498	0.188		1.427	8,481	563	8,083	2,611		19,737	145	208	112	131	131
Oct-18	1.172	0.121	0.897	0.354		2.544	0.529	0.054	0.405	0.160		1.148	8,481	564	8,083	2,611		19,738	138	215	111	136	129
Nov-18	1.173	0.121	0.906	0.064		2.264	0.495	0.051	0.383	0.027		0.956	8,488	565	8,083	2,611		19,746	138	214	112	136	129

Figure 3 (below) presents the 5-year historical average daily flows per month for each Member Agency. This is to provide a historical overview of the average treated flow by each agency. Also shown in Figure 3 is the total wastewater treatment capacity of the plant, 5.25 mgd, of which each Member Agency has the right to 2.2 mgd, Rancho Santa Fe Community Service District leases 0.25 mgd, and the City of Del Mar leases 0.60 mgd.



City of Escondido Flows

The average and peak flow rate for the month of March 2019 from the City of Escondido's Hale Avenue Resource Recovery Facility, which discharges through the San Elijo Ocean Outfall, is reported below.

	Flow (mgd)
Escondido (Average flow rate)	12.2
Escondido (Peak flow rate)	18.5

Connected Equivalent Dwelling Units

The City of Solana Beach and the City of Del Mar updated the connected EDUs number that is reported to the SEJPA in July 2018. The City of Encinitas and Rancho Santa Fe CSD report their connected EDUs every month. The number of EDUs connected for each of the Member Agencies and lease agencies is as follows:

	Connected (EDU)
Cardiff Sanitary Division	8,493
Rancho Santa Fe SID	568
City of Solana Beach	7,747
San Diego (to Solana Beach)	337
City of Del Mar	2,611
Total EDUs to System	19,755

Respectfully submitted,



Michael T. Thornton, P.E.
General Manager

SAN ELIJO JOINT POWERS AUTHORITY
MEMORANDUM

May 13, 2019

TO: Board of Directors
San Elijo Joint Powers Authority

FROM: General Manager

SUBJECT: SAN ELIJO WATER RECLAMATION PROGRAM – MONTHLY REPORT

RECOMMENDATION

No action required. This memorandum is submitted for information only.

DISCUSSION

Recycled Water Production

For the month of March 2019, recycled water demand was 31.29 acre-feet (AF), which was met using 31.29 AF of recycled water no supplementation with potable water.

March demand was 65% below budget due to rain events. The total water production for the year is below budget by 20% or 87 AF for the first 9 months of the fiscal year.

Figure 1 (attached) provides monthly demands for recycled water since deliveries began in September 2000. Figure 2 (attached) provides a graphical view of annual recycled water demand spanning the last 18 fiscal years. Figure 3 (attached) shows the monthly recycled water demand for each March since the program began. Figure 4 (attached) compares budget versus actual recycled water sales for FY 2018-19; showing sales are trending slightly below budget.

Respectfully submitted,



Michael T. Thornton, P.E.
General Manager

Figure 1 - MONTHLY RECYCLED WATER DEMAND

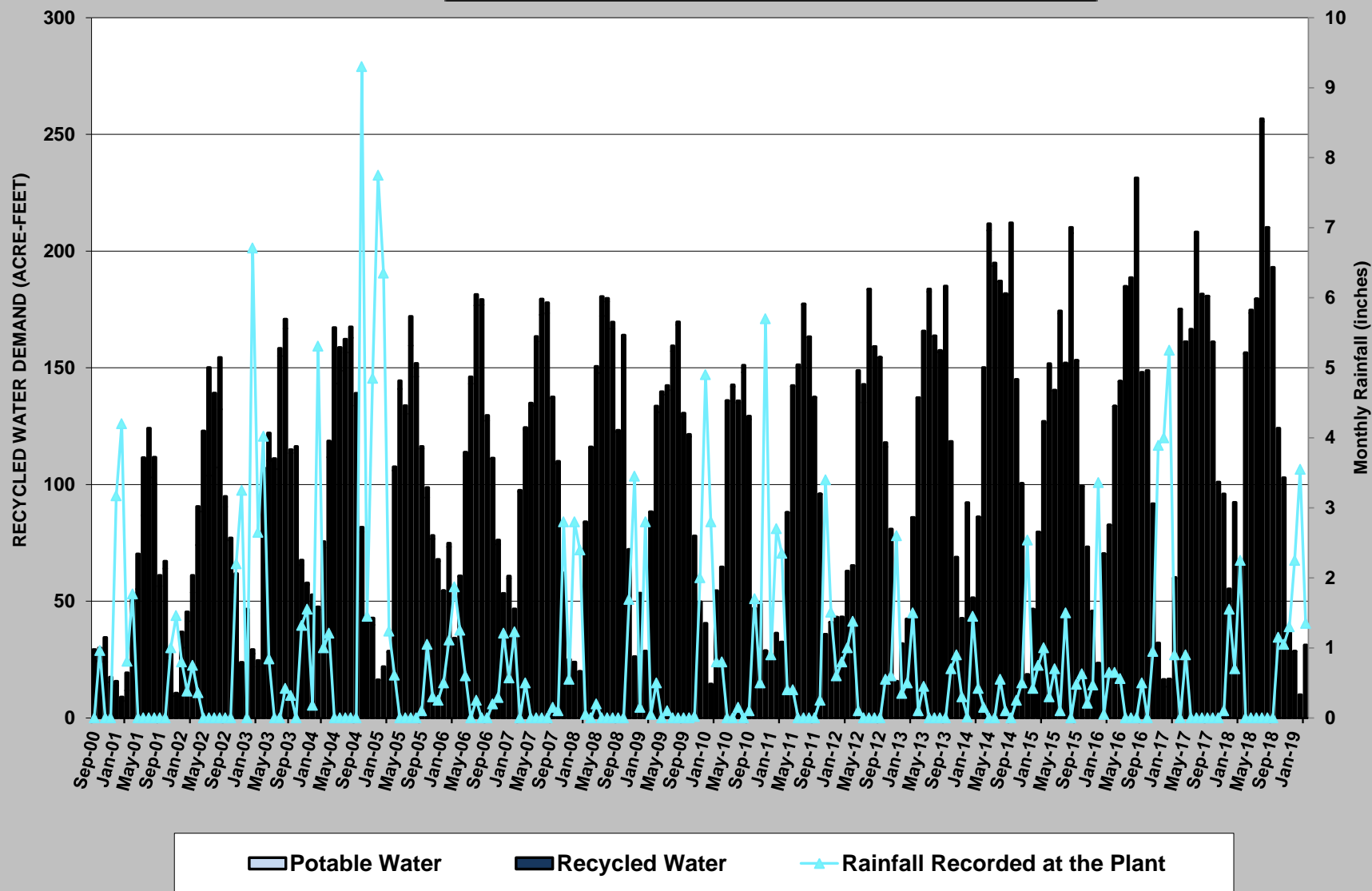


Figure 2 - RECYCLED WATER DEMAND by FISCAL YEAR

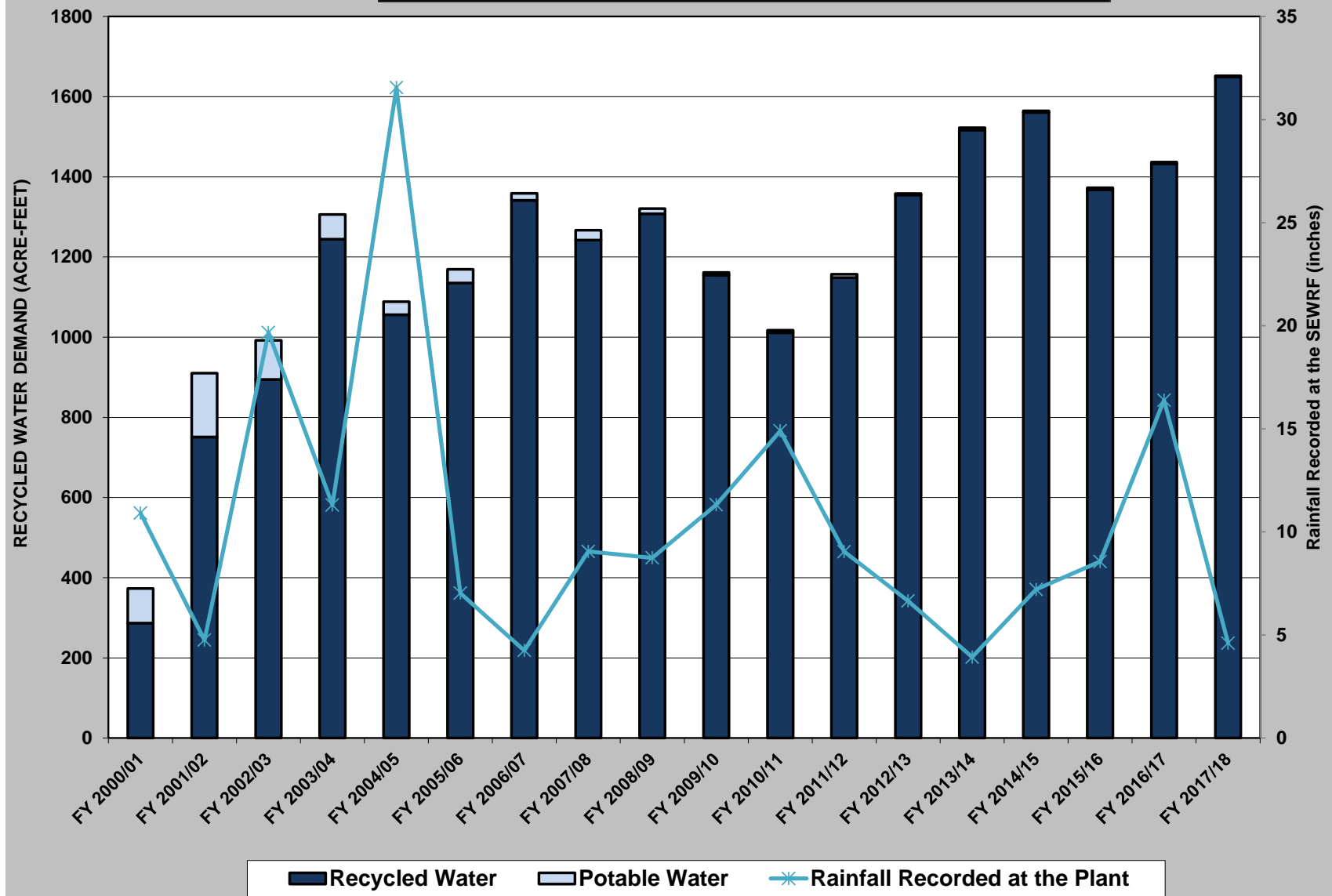


Figure 3 - MARCH RECYCLED WATER DEMAND

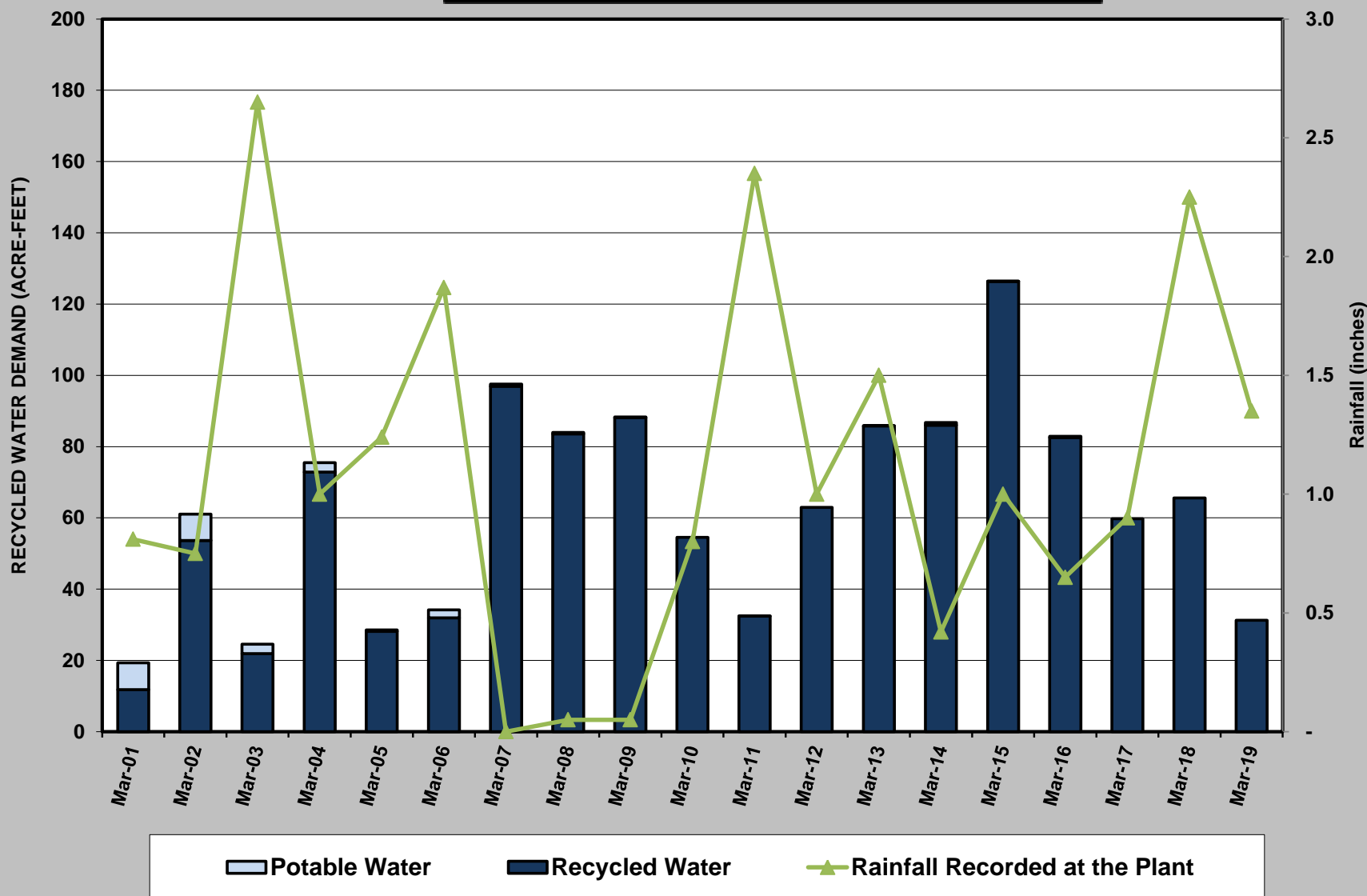
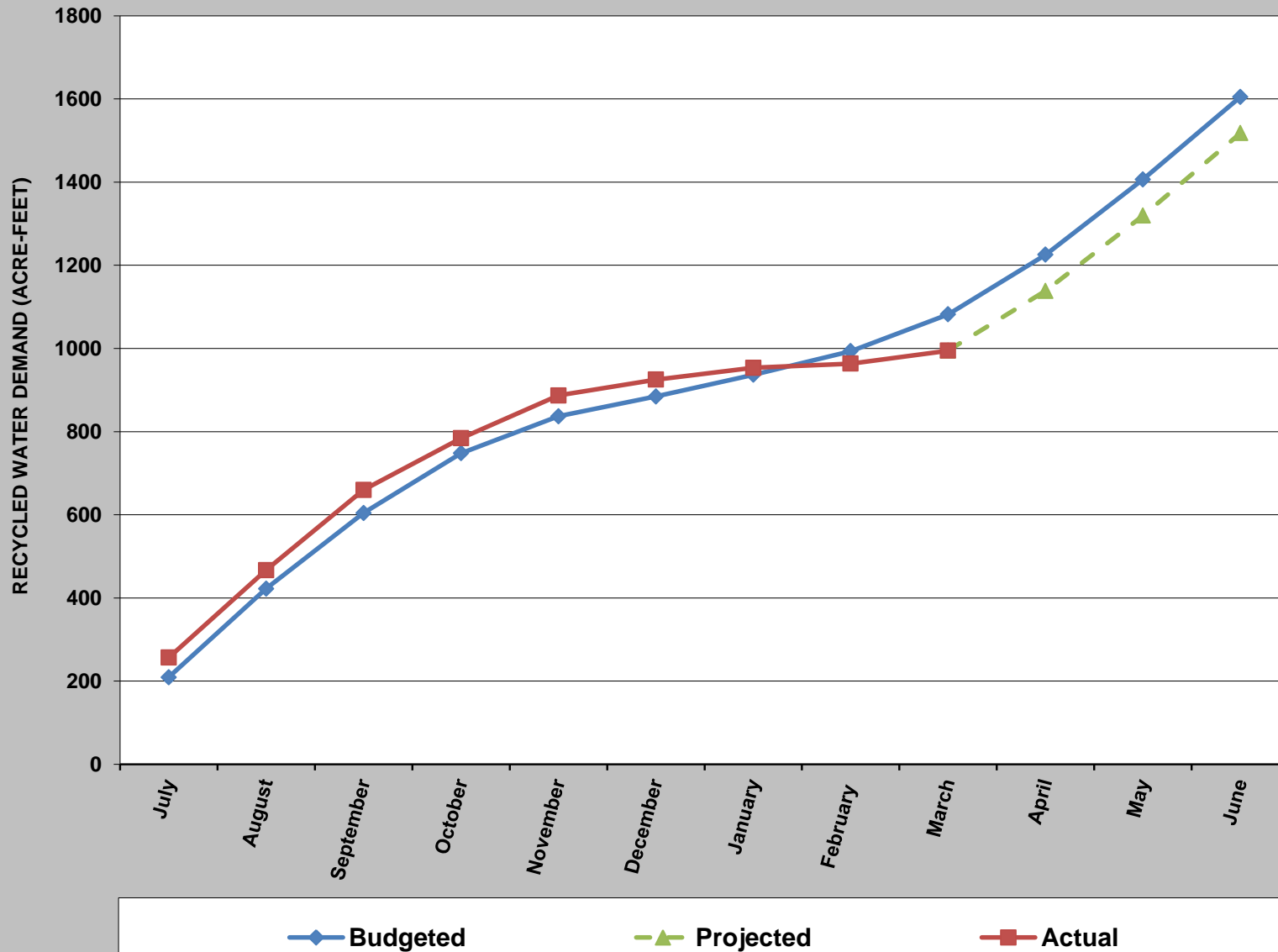


Figure 4 - RECYCLED WATER DEMAND BUDGET vs ACTUAL



SAN ELIJO JOINT POWERS AUTHORITY
MEMORANDUM

May 13, 2019

TO: Board of Directors
San Elijo Joint Powers Authority

FROM: Director of Finance/Administration

SUBJECT: SAN ELIJO JOINT POWERS AUTHORITY FISCAL YEAR 2019-20
RECOMMENDED BUDGET UPDATE

RECOMMENDATION

It is recommended that the Board of Directors:

1. Discuss and take action as appropriate.

BACKGROUND

Each year, the San Elijo Joint Powers Authority (SEJPA) prepares a recommended budget for the upcoming fiscal year. This budget is presented to the Board in April, and becomes a public document for comments and suggested changes by the Board, Member Agencies, other government agencies that receive services from the SEJPA, and the public.

DISCUSSION

At the April 2019 SEJPA Board meeting, Staff presented the FY 2019-20 Recommended Budget to the Board of Directors for public review and comment. In addition, the budget has been provided to staff of both Member Agencies as well as other government agencies that utilize SEJPA's services.

To date, the SEJPA has not received any proposed changes from the Member Agencies or other participating government agencies, as well as no public comments.

The budget will be presented to the Board of Directors for adoption at the June meeting along with the investment policy and appointment of SEJPA Treasurer for FY 2019-20.

It is, therefore, recommended that the Board of Directors:

1. Discuss and take action as appropriate.

Respectfully submitted,



Paul F. Kinkel
Director of Finance/Administration

SAN ELIJO JOINT POWERS AUTHORITY
MEMORANDUM

May 13, 2019

TO: Board of Directors
San Elijo Joint Powers Authority

FROM: General Manager

SUBJECT: RECEIVE AND FILE RECYCLED WATER EXPANSION PLAN; PARTNERSHIP PROJECT WITH SANTA FE IRRIGATION DISTRICT, SAN DIEGUITO WATER DISTRICT, OLIVENHAIN MUNICIPAL WATER DISTRICT, LEUCADIA WASTEWATER DISTRICT, AND SAN ELIJO JOINT POWERS AUTHORITY

RECOMMENDATION

It is recommended that the Board of Directors:

1. Receive and file the Recycled Water Expansion Plan; and
2. Discuss and take action as appropriate.

BACKGROUND

Due to droughts and other events that strain and limit California's existing water supplies, water agencies are examining options that go beyond current conventional water supplies to create long-term reliable and sustainable water systems. In 2016, San Elijo Joint Powers Authority (SEJPA) partnered with San Dieguito Water District (SDWD) and Santa Fe Irrigation District (SFID) to prepare a Potable Reuse Feasibility Study (Study). The Study evaluated the feasibility of a future potable reuse project, including potential opportunities and challenges associated with the project. The primary conclusion of the feasibility study was that a potable reuse project utilizing surface water augmentation (SWA) at San Dieguito Reservoir appeared feasible and cost effective.

The Study also identified several project constraints or challenges associated with developing a potable reuse project. Two significant project constraints were identified that required further assessment:

Wastewater supply: additional wastewater flows are required to provide adequate source water to meet the ultimate projected potable reuse goals.

Modification of San Dieguito Reservoir operation: To maximize the benefit of San Dieguito Reservoir for potable reuse, modifications to the reservoir operation will be required.

Since the completion of the Study, other potential non-potable regional recycled water projects have been proposed and studied. These projects include providing non-potable recycled water to the Rancho Santa Fe and Bridges golf courses, as well as serving other large water users in the area. The recycled water facility plan prepared by the North San Diego Water Reuse Coalition included a derivative of this project, which would first provide recycled water to the golf courses and then advance to a potable reuse project in a phased approach. This project could supply up to 1,000 acre-feet annually (AFY) in the early years of the project, and then develop to approximately 3,000 – 4,000 AFY at the ultimate potable reuse design. The list of project partners includes Olivenhain Municipal Water District (OMWD), Leucadia Wastewater District (LWWD), SFID, SDWD, and SEJPA.

DISCUSSION

The development of locally produced water to complement and diversify current water supplies has value to the region. In November 2017, the Board of Directors authorized the General Manager to participate in the development of the Recycled Water Expansion Plan (Plan) to further refine the potential potable reuse project, and its associated costs. In addition, the Board approved a cost sharing agreement with SFID, SDWD, OMWD, and LWWD to fund the Plan.

The purpose of the Plan was to build upon the 2016 Study to address areas lacking information, and to compare (and potentially combine) the identified potable reuse project with various Non-Potable Reuse (NPR) alternatives.

The scope of work for the Plan was structured to answer the following key questions:

1. How do state regulations impact the viability and assumed size of the proposed SWA Project?
2. Is there a sufficient volume of wastewater available to accommodate the projected SWA and NPR demands?
3. What are the improvements required at the R.E. Badger Filtration Plant to accommodate a SWA Project?
4. What are the updated capital, O&M, and unit cost for various SWA, NPR, and combined SWA/NPR scenarios?
5. What is the preferred project alternative along with next steps for implementation?

The completed Plan answers each key question. The Plan includes a series of memoranda focusing on the key areas of concern, and an Executive Summary that consolidates the findings from each of the memoranda. The Executive Summary is included as Attachment 1.

The Plan recommends Scenario 3 as the preferred approach because it provides the greatest regional benefits, the unit cost of water is within the range of future potable water cost, and the two phase approach provides the opportunity to supply NPR to the golf courses while still developing the SWA project. Next steps are to create a formal management structure for collaboration between the agencies, develop a financial model to refine agency rates and pursue outside funding opportunities, and begin technical studies and designs.

FINANCIAL IMPACT

There is no fiscal impact associated with this item. The total cost for the Plan was \$287,529. The primary project partners (SFID, SDWD and SEJPA) equally shared 75% of the total cost. OMWD and LWWD shared the remaining 25%. SEJPA's cost share for the project was \$71,882, which was included in the FY2018-19 Budget.

It is therefore recommended that the Board of Directors:

1. Receive and file the Recycled Water Expansion Plan; and
2. Discuss and take action as appropriate.

Respectfully submitted,

A handwritten signature in black ink, appearing to read 'M. Thornton', written over a horizontal line.

Michael T. Thornton, P.E.
General Manager

Attachment 1: Recycled Water Expansion Plan Executive Summary

ATTACHMENT 1

Executive Summary



TO: Santa Fe Irrigation District, San Dieguito Water District, San Elijo Joint Powers Authority, Olivenhain Municipal Water District, Leucadia Wastewater District

FROM: Janet Fordunski, P.E., Woodard & Curran

REVIEWED BY: Scott Goldman, P.E., Woodard & Curran
Shane Trussell, Trussell Technologies

DATE: March 26, 2019

RE: Recycled Water Expansion Plan Development

1. OBJECTIVES

The Santa Fe Irrigation District (SFID), San Dieguito Water District (SDWD), San Elijo Joint Powers Authority (SEJPA), Olivenhain Municipal Water District (OMWD) and the Leucadia Wastewater District (LWWD) are jointly participating in this Recycled Water Expansion Plan Development study to expand recycled water use within their service areas. This study builds upon information previously developed in the *Potable Reuse Feasibility Study* (Trussell, 2016) and the *Eastern Service Area Recycled Water Facilities Plan* (RMC, 2011). While each of the agencies involved in this study have existing recycled water systems, they recognize they have limited ability to significantly expand without further integration of facilities within the region. The purpose of this study is to identify whether a regional project is viable by addressing key issues that remained following completion of the previous studies, as follows:

How much flow is allowed in a potable reuse project under Surface Water Augmentation (SWA) regulations finalized and promulgated in 2018?

Is there enough local wastewater available to support the recycled water expansion projects under consideration?

What is the total cost of a recycled water expansion project compared with imported water?

Six workshops were facilitated with the participating agencies. Four technical memorandums (TMs) were developed, each addressing a specific aspect of a potable reuse project, as follows:

- **TM1:** Regulatory Considerations for Surface Water Augmentation Projects
- **TM2:** Evaluation of Recycled Water Supplies
- **TM3:** R.E. Badger Filtration Plant Improvements
- **TM4:** Evaluation of Alternatives

Each of the TMs are attached to this Executive Summary for reference.

2. KEY FINDINGS

Key findings from each of the TMs are summarized in the following sections.

2.1 TM1: Regulatory Considerations for SWA Projects

The 2016 Potable Reuse Study assumed that 4.0 million gallons per day (mgd) could be reused in the San Dieguito Reservoir, which was prior to adoption of the SWA regulations in March 2018. Evaluation of the SWA regulations yields the following key findings:

- Regulations provide a clear regulatory pathway for the SWA project under consideration.
- As compared to the 4.0 mgd (4,480 acre-feet per year [AFY]) assumed in the 2016 Potable Reuse Study, 2018 regulations allow a maximum of 3.1 mgd (3,472 AFY) of purified water to be used for SWA based on a minimum theoretical hydraulic residence time of 60 days in the San Dieguito Reservoir.
- The proposed SWA project requires the San Dieguito Reservoir be dedicated to potable reuse, which means only purified water can be routinely discharged into the San Dieguito Reservoir. Currently, the San Dieguito Reservoir is used for pre-treatment of Lake Hodges water and receives filtrate waste washwater produced at R.E. Badger Filtration Plant (Badger FP).
- Operational changes and improvements are required at the Badger FP to dedicate the San Dieguito Reservoir to potable reuse. Improvements include pretreatment of Lake Hodges water, influent mixing, and a filtrate waste washwater treatment system. (See TM3)
- Governance and source control need be addressed for the multiple wastewater supplies being considered.
- The SWA regulations require more stringent source control programs for wastewater supplies. This has implications for this project, since source waters for potable reuse may come from multiple sewersheds in the region.

2.2 TM2: Evaluation of Recycled Water Supplies

Expansion of the recycled water system requires additional water supplies. Demand varies between 1.8 mgd and 4.3 mgd depending on the potential recycled water alternative (described in **Section 2.4** of this Executive Summary). Local recycled water supplies that were considered to meet demands are presented in **Table 1**. Some other potential supplies were eliminated due to relatively small volume, poor water quality, or high implementation cost as discussed in TM2.

Table 1: Recycled Water Supplies Considered

Supply	Estimated Flow	Level of Treatment	Proposed Treatment Location
San Elijo WRF	2.4 mgd	Tertiary Effluent	SEWRF
Del Mar	0.4 mgd	Raw Wastewater	SEWRF
Encinitas	1.0 mgd	Raw Wastewater	SEWRF
Gafner WRF	1.0 mgd	Tertiary Effluent	Gafner WRF
Escondido HARRF	6.8 mgd	Secondary Effluent	SEWRF

Evaluation of the potential recycled water supplies yields the following key findings:

- Adequate recycled water supplies exist to satisfy additional demands for either expansion of Non-Potable Reuse (NPR) or a potable reuse project using SWA.
- Unit costs for recycled water supplies are lowest for a potable reuse project using SWA, primarily because the volume of water is greater than expansion of NPR.
- Institutional complexity and regulatory feasibility may have an impact on the preferred supplies.

2.3 TM3: R.E. Badger Water Filtration Plant Improvements

To implement a potable reuse project using SWA, Lake Hodges water would be routed directly to the R.E. Badger Water Filtration Plant (Badger FP) instead of through the San Dieguito Reservoir. Operational changes and improvements focused on the treatability of Lake Hodges water prior to the Badger FP are required to dedicate the San Dieguito Reservoir to SWA. The evaluation of the Badger FP improvements yields the following key findings:

- Proposed use of high purity oxygen (HPO) to increase dissolved oxygen to oxidize iron and sulfides in the Lake Hodges water. Injection of HPO is proposed at the Cielo Pump Station to maximize retention time.
- Recommended use of a chemical oxidant, such as chlorine dioxide or sodium permanganate, for oxidation of manganese injected at Badger FP in the 36-inch pipeline carrying Lake Hodges water.
- Addition of an influent mixing structure at the headworks of the Badger FP to effectively mix the various influent source waters.
- Under SWA, discharge of filter wash water from Badger FP would no longer be allowed to the San Dieguito Reservoir. Improvements would be necessary to recycle filter wash water to the head of the process, such as solids removal to reduce turbidity.

The construction cost estimate for the identified improvements to the Badger FP is approximately \$8.5 million including acquisition of land near the Cielo Pump Station that may be required. Further study along with bench scale testing should be performed to verify chemical dose and performance impacts of the proposed improvements.

2.4 TM4: Evaluation of Alternatives

Four scenarios were developed for an expansion of recycled water use. The scenarios included expansion of NPR, SWA implementation, and a combination of SWA and NPR expansion. A brief summary of these scenarios is as follows:

Scenario 1 – NPR Expansion. This scenario provides tertiary treated recycled water (NPR) to SFID and OMWD. The NPR expansion adds 700 AFY of demand in the SFID Eastern Service Area (RSFGC and residential demands) and 400 AFY in the OMWD service area (Bridges Golf Course) for an annual demand of 1,100 AFY and a peak month demand of 1.8 mgd. It is assumed that the additional NPR supply would be conveyed from SEWRF through the SDWD pipeline to customers in SFID and OMWD (See **Figure 1**). Coupled with the existing NPR demand, the total annual supply needed is 2,705 AFY (1,605 AFY existing plus 1,100 AFY new) and the corresponding peak month demand is 4.2 mgd.

Scenario 2 – SWA. This scenario provides advanced treated recycled water for potable reuse through SWA in the San Dieguito Reservoir without expansion of NPR. It assumes the supply of advanced treated water would be conveyed through the SDWD pipeline to the San Dieguito Reservoir from an Advanced Water Treatment Facility (AWTF) at SEWRF (See **Figure 2**). For a 3.1 mgd SWA project, the AWTF requires a supply of 3.7 mgd (3.1 mgd product plus 0.6 mgd RO concentrate). Coupled with the existing NPR demand, the total annual supply needed is 5,749 AFY (1,605 AFY existing plus 4,144 AFY new) and the corresponding peak month demand is 6.1 mgd.

Scenario 3 – SWA and Irrigation with AWTF Water. This scenario produces advanced treated recycled water for potable reuse through SWA in the San Dieguito Reservoir with additional advanced treated water for irrigation of two golf courses in the SFID and OMWD. It assumes the supply of advanced treated water would be conveyed through the SDWD pipeline to the San Dieguito Reservoir from an AWTF at SEWRF. Additional pipelines would be constructed from the SDWD pipeline to supply the Bridges Golf Course in OMWD and the Rancho Santa Fe Golf Course in SFID (See **Figure 3**). This scenario includes SWA at 3.1 mgd plus 1.2 mgd of advanced treated water to irrigate the golf courses (4.3 mgd product). The AWTF requires a supply of 5.1 mgd (4.3 mgd product plus 0.8 mgd RO concentrate). Coupled with the existing NPR demand, the total annual supply needed is 6,535 AFY (1,605 AFY existing plus 4,930 AFY new) and the corresponding peak month demand is 7.5 mgd.

Scenario 3 provides the opportunity to implement NPR prior to the SWA project. The initial NPR project would supply tertiary treated recycled water to the two golf courses through the SDWD pipeline while the ultimate SWA project is in development. Implementing NPR in advance of the SWA project would achieve rehabilitation of the SDWD pipeline, a critical infrastructure element needed for the SWA project.

Scenario 4 – SWA and NPR Expansion. Scenario 4 can be considered two separate projects: an SWA project and an NPR expansion project. This scenario produces advanced treated recycled water for potable reuse through SWA. It also expands the existing NPR system to serve the two golf courses in SFID and OMWD (Bridges GC and RSFGC). The supply of advanced treated water for SWA would be conveyed through the SDWD pipeline. The NPR water to the golf courses would be conveyed through an expansion of the existing NPR distribution system (See **Figure 4**). This scenario includes SWA at 3.1 mgd plus 1.2 mgd of tertiary treated (NPR) water to irrigate the two golf courses. The AWTF requires a supply of 3.7 mgd (3.1 mgd produce plus 0.6 mgd RO concentrate). Coupled with the existing NPR demand, the total annual supply needed is 6,434 AFY (1,605 AFY existing plus 4,829 AFY new) and the corresponding peak month demand is 7.3 mgd.

Scenario 4 provides the opportunity to implement the NPR project component prior to the SWA project. The initial NPR project would supply tertiary treated recycled water to the two golf courses through expansion of the SEJPA recycled water system. The NPR component could be operational earlier than the SWA project.

The volume of additional recycled water needed to satisfy SWA requirements and peak month irrigation demands for each scenario are summarized in **Table 2**.

Table 2: Demands for Recycled Water Project Alternatives

Scenario	New Demand (mgd)	New Recycled Water Yield (AFY)	Total Peak Supply * (mgd)
Scenario 1:			
NPR Expansion	1.8 mgd (peak)	1,100 AFY	4.2 mgd
Scenario 2:			
SWA	3.1 mgd	3,472 AFY	6.1 mgd
Scenario 3:			
NPR Component SDWD Pipeline	1.2 mgd (peak)	685 AFY	3.6 mgd
Total SWA + Irrigation w/ATWF Water	3.1 mgd + 1.2 mgd (peak)	4,157 AFY	7.5 mgd
Scenario 4:			
NPR Component SEJPA system	1.2 mgd (peak)	685 AFY	3.6 mgd
Total SWA and NPR Component	3.1 mgd + 1.2 mgd (peak)	4,157 AFY	7.3 mgd

**Note: Peak supply required includes existing NPR demand plus new demand for recycled water and RO concentrate loss.*

Evaluation of the four Scenarios result in the following key findings:

- Capital costs range from a low of \$51 million to \$152 million for the four scenarios assuming an average cost for the various supply options.
- The four scenarios (SWA and/or NPR expansion) were determined to be viable when compared with the projected cost of imported water.
- The opportunity to use the existing 30-inch SDWD pipeline by slip-lining between the SEWRF to the San Dieguito Reservoir provides cost benefits for all scenarios. Slip-lining the existing pipeline is less costly and has significantly less impact on the environment. The San Dieguito Water District owns this existing pipeline and the cost for leasing or purchasing the pipeline is not included in this evaluation.
- Scenario 4 is the only scenario that relies on the existing SEJPA recycled water system. The two golf courses would be supplied tertiary recycled water conveyed through expansion of the existing system. The cost to use the existing SEJPA system is not included in this evaluation and would need to be developed by SEJPA.

A summary of the capital cost and unit cost for each Scenario, including the initial NPR components, is provided in **Table 3**.

Table 3: Cost Summary

Scenario	2018 Capital Cost* (Million \$)	2018 Unit Cost (\$/AF)			
		Capital (non-supply)	Supply (average)	O&M	Total
Scenario 1:					
NPR Expansion	\$ 51 M	\$ 1,670 / AF	\$ 440 / AF	\$ 165 / AF	\$ 2,275 / AF
Scenario 2:					
SWA	\$ 119 M	\$ 1,420 / AF	\$ 108 / AF	\$ 822 / AF	\$ 2,350 / AF
Scenario 3:					
NPR Component SDWD Pipeline	\$ 31 M	\$ 1,480 / AF	\$ 530 / AF	\$ 160 / AF	\$ 2,170 / AF
Total SWA + Irrigation w/AWTF Water	\$ 152 M	\$ 1,542 / AF	\$ 94 / AF	\$ 914 / AF	\$ 2,550 / AF
Scenario 4:					
NPR Component SEJPA system*	\$ 30 M	\$ 1,425 / AF	\$ 535 / AF	\$ 160 / AF	\$ 2,120 / AF*
Total SWA and NPR Component*	\$ 141 M	\$ 1,405 / AF	\$ 115 / AF	\$ 710 / AF	\$ 2,230 / AF*

*Cost to use the existing SEJPA NPR system is not included in Scenario 4 and would need to be developed by SEJPA.

A comparison between the cost of recycled water and the cost of imported water is provided in the following charts. Projected costs for the recycled water projects were escalated 3% per year from the assumed midpoint of construction. A range was developed for the projected cost of imported water through 2045. The low estimate was based on the average annual rate increase over the past three years (2017 through 2019) of 5 percent per year, starting with the 2019 rate of \$1,341/AF. The high estimate of 8 percent per year was based on the average annual rate increase over the past 15 years (2005 through 2019).

Charts 1 through **4** compare the unit costs for four Scenarios with the projected cost of untreated imported water from the SDCWA. As can be seen from the Charts, unit costs for scenarios with NPR are expected to be equal to the cost

of imported water by 2030, assuming the projects are implemented by 2025. Unit costs for scenarios with SWA are expected to be equal to the cost of imported water by 2035, assuming the projects are implemented by 2030.

Chart 1: Scenario 1 (NPR Expansion) Imported Water Cost Comparison

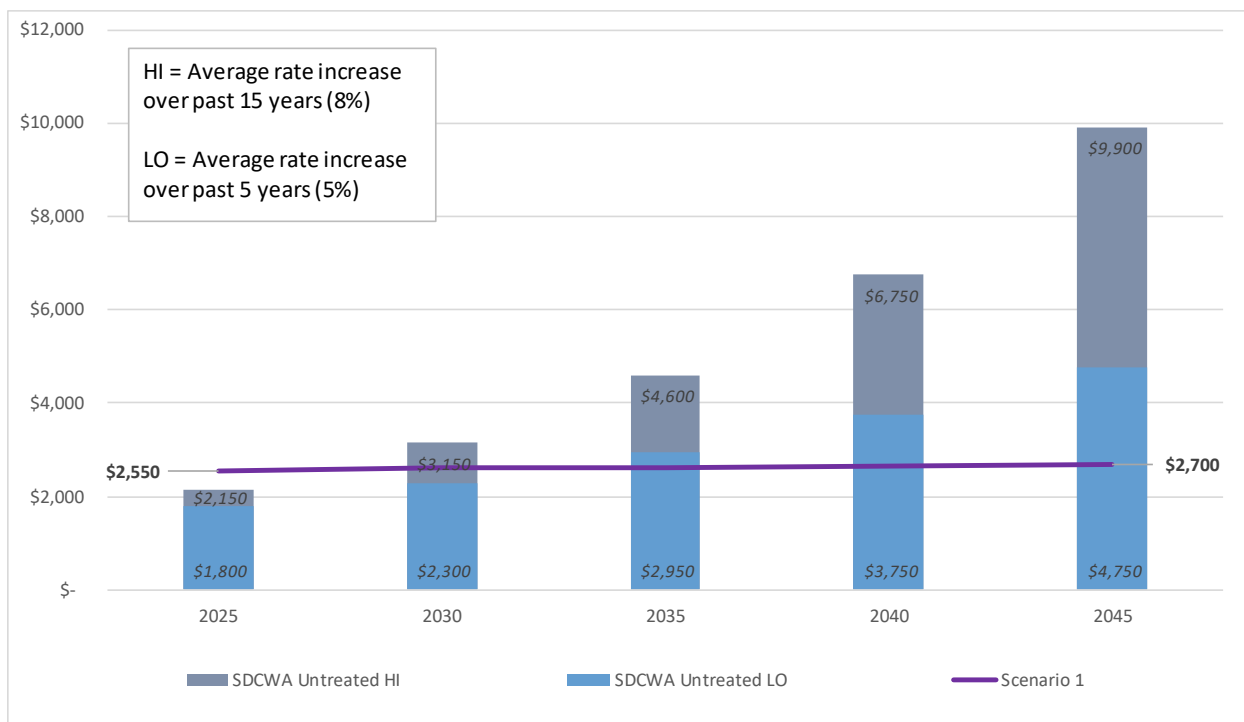


Chart 2: Scenario 2 (SWA) Imported Water Cost Comparison

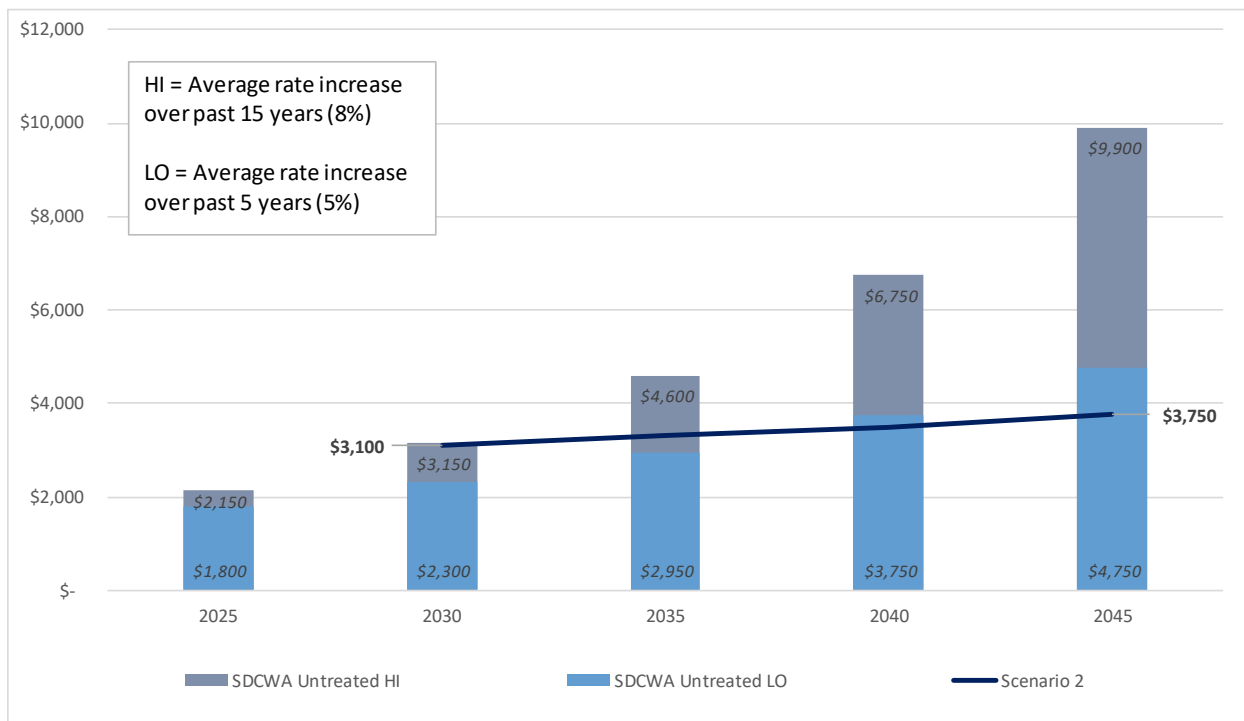


Chart 3: Scenario 3 (NPR Component Followed by SWA) Imported Water Cost Comparison

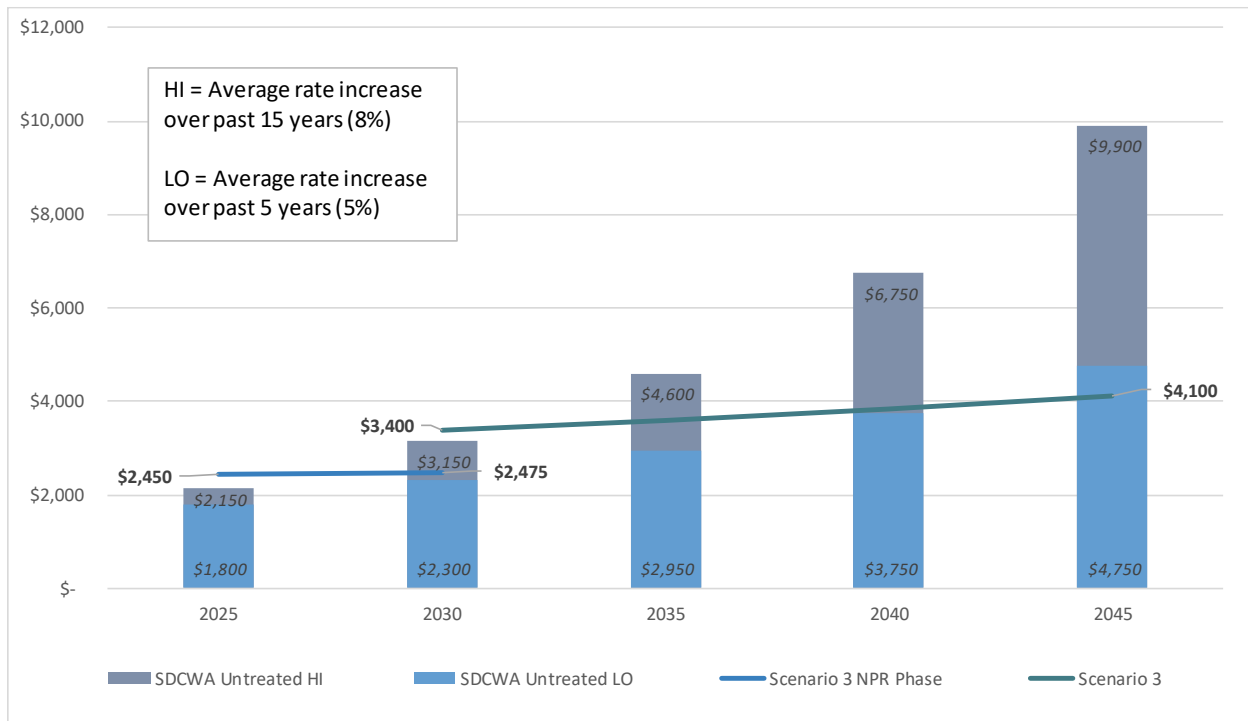
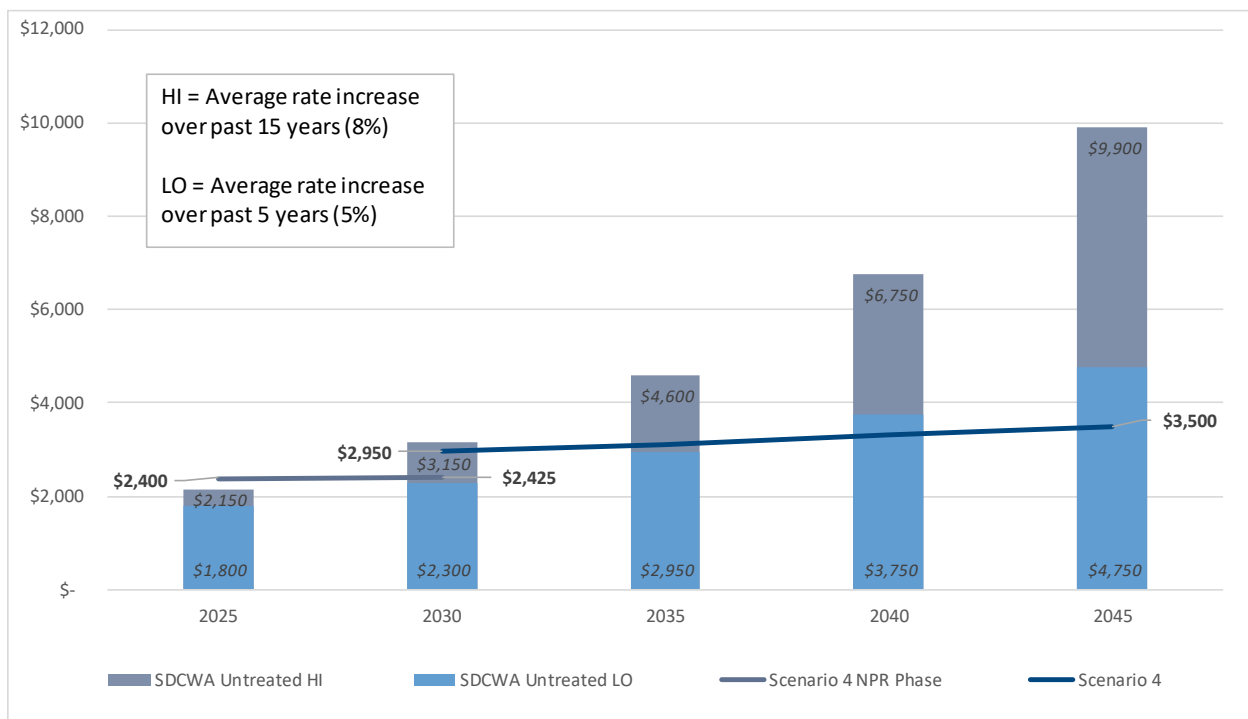


Chart 4: Scenario 4 (NPR Component Followed by SWA) Imported Water Cost Comparison*



* Cost to use the existing SEJPA NPR system is not included in Scenario 4.

3. SELECTED APPROACH

The results of TM4 were presented and discussed at a workshop with all the participating agencies on December 3, 2018. The difference in capital costs between the scenarios is large, varying between \$51M and \$152M. The benefits derived by each agency differ considerably between scenarios. A larger project with more agency participation would result in more agencies to share in the cost. Availability of outside funding is also likely increase with more agencies involved and for projects including a potable reuse component.

After consideration of all project benefits, Scenario 3 was selected as the preferred approach to a regional recycled water project for the following reasons:

- Scenario 3 allows all of the agencies to benefit from a regional recycled water project. The selected approach includes an initial NPR component of 1.2 mgd (peak) followed by SWA of 3.1 mgd. Providing recycled water (NPR) to the Bridges and Rancho Santa Fe Golf Clubs would benefit OMWD and SFID, respectively. LWWD and SEJPA could benefit through the opportunity to increase use of existing wastewater treatment infrastructure. The SWA project would benefit SDWD and SFID.
- Even without outside funding, the unit cost of recycled water would be within the range of the projected cost of imported water by 2035 and near the low cost by 2040, assuming the full project is implemented by 2030.
- Scenario 3 provides the opportunity for an NPR component to supply the two golf courses with non-potable water while the ultimate SWA project is in development. Benefits of the initial NPR component are multiple:
 - The NPR component can provide recycled water sooner than SWA by approximately five years (2025 vs. 2030).
 - Rehabilitating the existing pipe for the NPR Component offsets capital expenditures for the ultimate SWA project and makes use of existing infrastructure sooner.
 - Rehabilitating the existing SDWD pipe to the San Dieguito Reservoir makes the ultimate potable reuse project cost-effective.
- The estimated capital cost for the selected approach is \$152 million with an unit cost of \$2,550 per AF. The capital cost would be phased as follows:
 - Initial NPR component capital cost of \$31 million at an estimated unit cost of \$2,170 per AF. Major elements of this capital cost include rehabilitation of the SDWD pipeline, development of the additional water supplies, and new storage facilities and pipelines for the golf courses. The NPR component could be implemented by 2025.
 - Subsequent transition to SWA at additional capital cost of \$121 million yielding an estimated unit cost of water of \$2,550 per AF. Major elements of this capital cost include construction of the AWT facilities at the SEWRF and improvements at the Badger Filtration Plant. The transition to SWA could be implemented by 2030.
- Infrastructure constructed for the NPR component are included in the ultimate SWA project. Resources would not be stranded after the transition to SWA and using AWT water for irrigation.

4. NEXT STEPS

The recommended next steps are summarized in the following actions.

Institutional

- Create a work group composed of representatives from each participating agency to establish a common vision, develop non-binding principles of understanding, and create a memorandum of understanding for funding near-term activities.
- Discuss and work towards an appropriate governance structure between participating agencies. A regulatory permitting requirement for SWA projects is that the participating parties have dedicated Technical, Managerial, and Financial resources.
- Initiate the California Environmental Quality Act process. Low interest rate loans and grants are available for agencies that have completed the necessary environmental documentation.

Financial

- Develop a financial model that can be used to determine water costs for each participating agency. The intent would be that this would be a living model that is updated to support negotiations, refine agency rates, and would also be updated as levels of design and specific studies are completed. This will continue until documents are released for construction.
- Identify and pursue outside funding opportunities for grants and low interest loans.

Technical

- Wastewater Supplies: Identify the additional recycled water supplies to be used and begin facility and source control planning for each supply.
- Distribution System: Assess the status of the San Dieguito Water District pipeline and perform an alignment study for new pipelines to serve the two golf courses. Refine peak golf course demand conditions and identify available onsite storage opportunities for recycled water and onsite retrofit requirements.
- Flow Management: Refine storage and pumping needs at the San Elijo Water Reclamation Facility.
- San Elijo Water Reclamation Facility: Evaluate the nitrification conversion process (membrane bioreactor versus conventional) to see if a membrane bioreactor can reduce the advanced water treatment facility costs while maintaining regulatory compliance for pathogen reduction.
- R.E. Badger Filtration Plant: Perform bench and pilot testing for pretreatment of Lake Hodges water.
- Surface Water Augmentation: Perform reservoir modeling to determine the expected dilution credit provided by the San Dieguito Reservoir.
- Infrastructure: Once studies are complete, predesign and design work should continue to refine project concepts and costs to prepare for implementation.

5. REFERENCES

RMC (2011). Santa Fe Irrigation District Eastern Service Area Recycled Water Facilities Plan: dated September 2.

Trussell Technologies (2016). Potable Reuse Feasibility Study prepared for Santa Fe Irrigation District, San Elijo Joint Powers Authority, and San Dieguito Water District: dated March. Available at:

http://www.sejpa.org/wpro_projects/sejpa/userfiles/Potable_Reuse_Feasibility_Study_March2016.pdf

Trussell Technologies (2018). Draft Technical Memorandum, Task 1: Regulatory Considerations for Surface Water Augmentation Projects: dated February 26th.

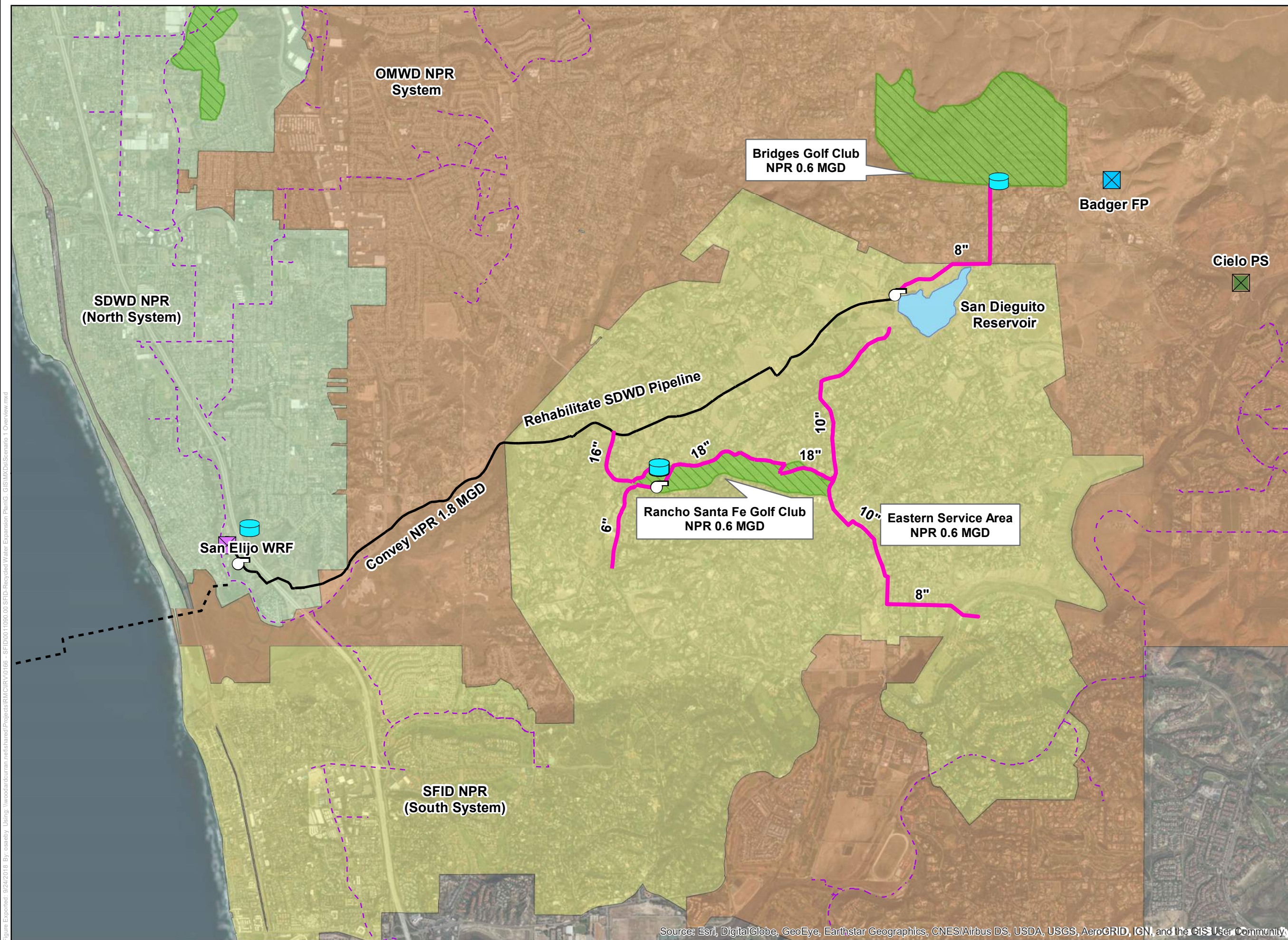
Woodard & Curran (2018). Technical Memorandum, Task 2: Evaluation of Recycled Water Supplies: dated September 20th.

Trussell Technologies (2018). Draft Technical Memorandum, Task 3: R.E. Badger Filtration Plant Improvements: dated October 4th.

Woodard & Curran (2018). Technical Memorandum, Task 4: Evaluation of Alternatives: dated September 24th.

FIGURES

Figure Exported: 9/24/2018 By: osaeby Using: \\woodardcurran.net\shared\Projects\RMC\IRV\01066 - SFID\0011090.00 SFID-Recycled Water Expansion Plan\GIS\MapDocs\Scenario 1 Overview.mxd



Scenario 1 NPR Expansion (1,100 AFY)

Legend

- SFID
- OMWD
- SDWD
- Existing NPR Pipeline
- Ocean Outfall
- SDWD 30" Pipe
- Proposed NPR Pipeline
- Proposed Storage Tank
- Proposed Pump Station

Figure 1

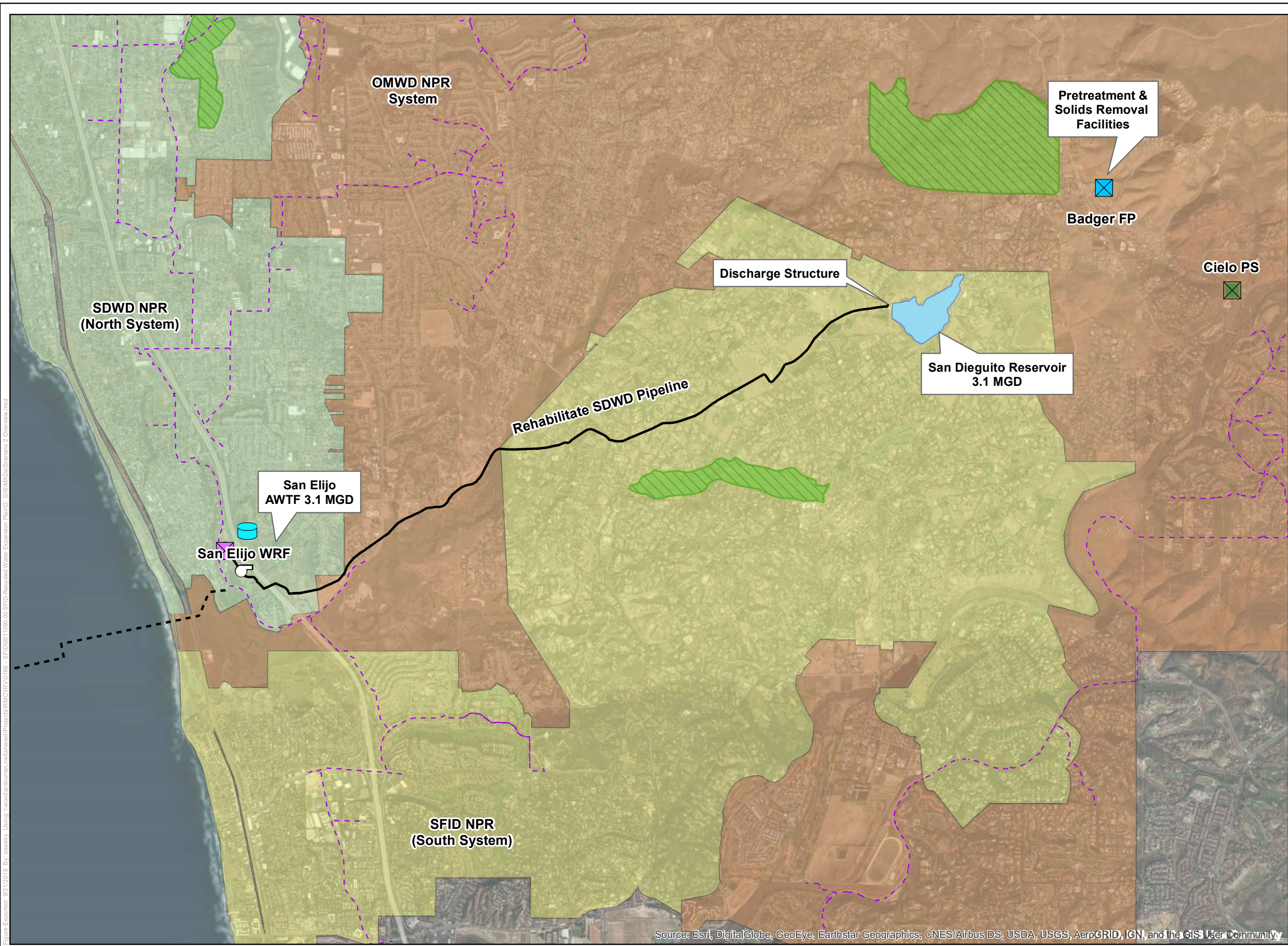
N

0 0.25 0.5 1 Miles

Project #: 0011090
Map Created: September 2018

Third Party GIS Disclaimer: This map is for reference and graphical purposes only and should not be relied upon by third parties for any legal decisions. Any reliance upon the map or data contained herein shall be at the users' sole risk. **Data Sources:**

Figure Exported: 9/21/2018 By: osaeby Using: \\woodardcurran.net\shared\Projects\RM\RM\RV\01066 - SFID\0011090.00 SFID-Recycled Water Expansion Plan\G. GIS\MapDocs\Scenario 2 Overview.mxd



Scenario 2 SWA (3,472 AFY)

Legend








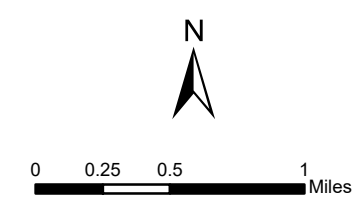
-  SFID
-  OMWD
-  SDWD
-  Existing NPR Pipeline
-  Ocean Outfall
-  SDWD 30" Pipe
-  Proposed Pump Station

Figure 2

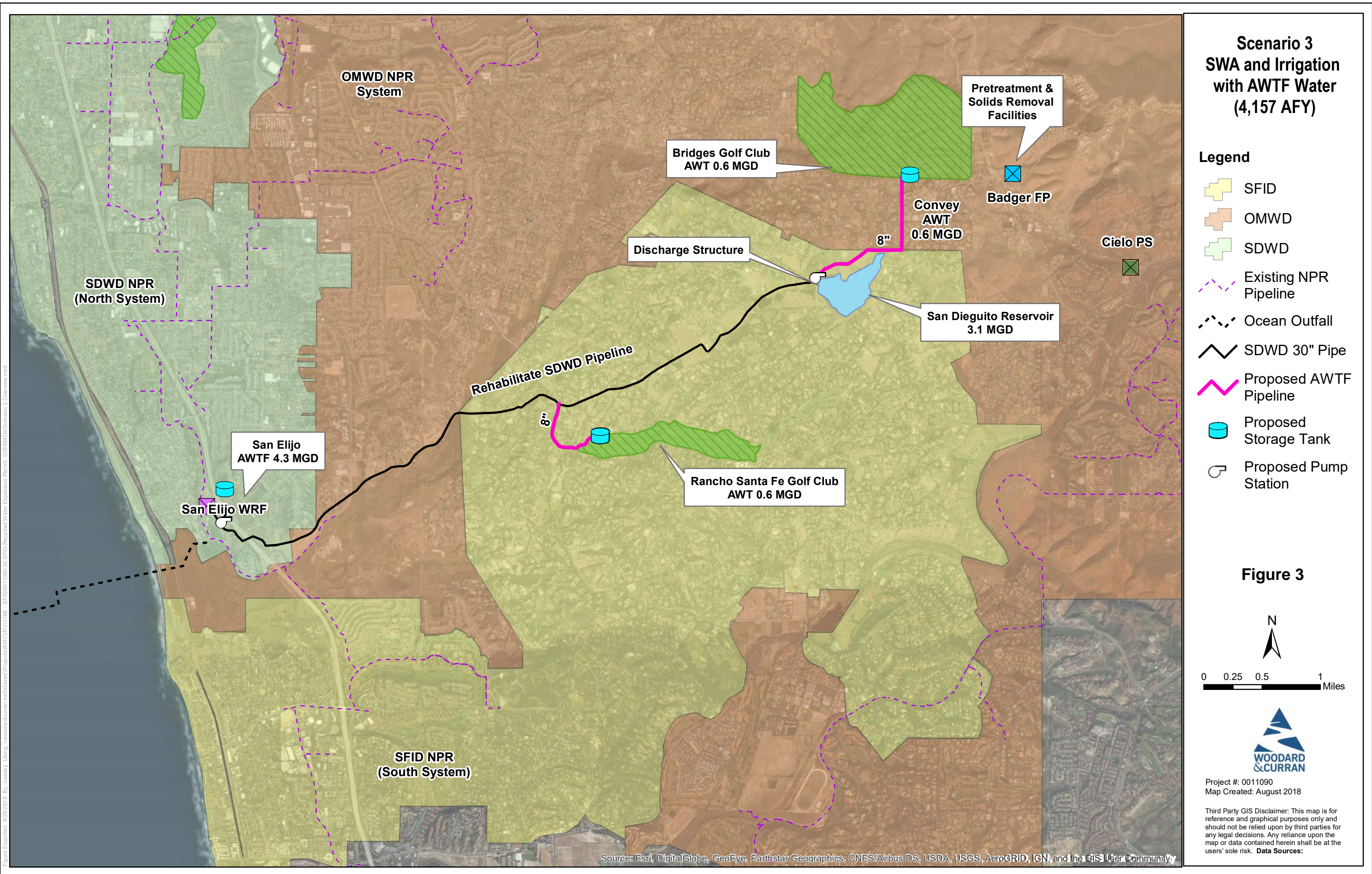


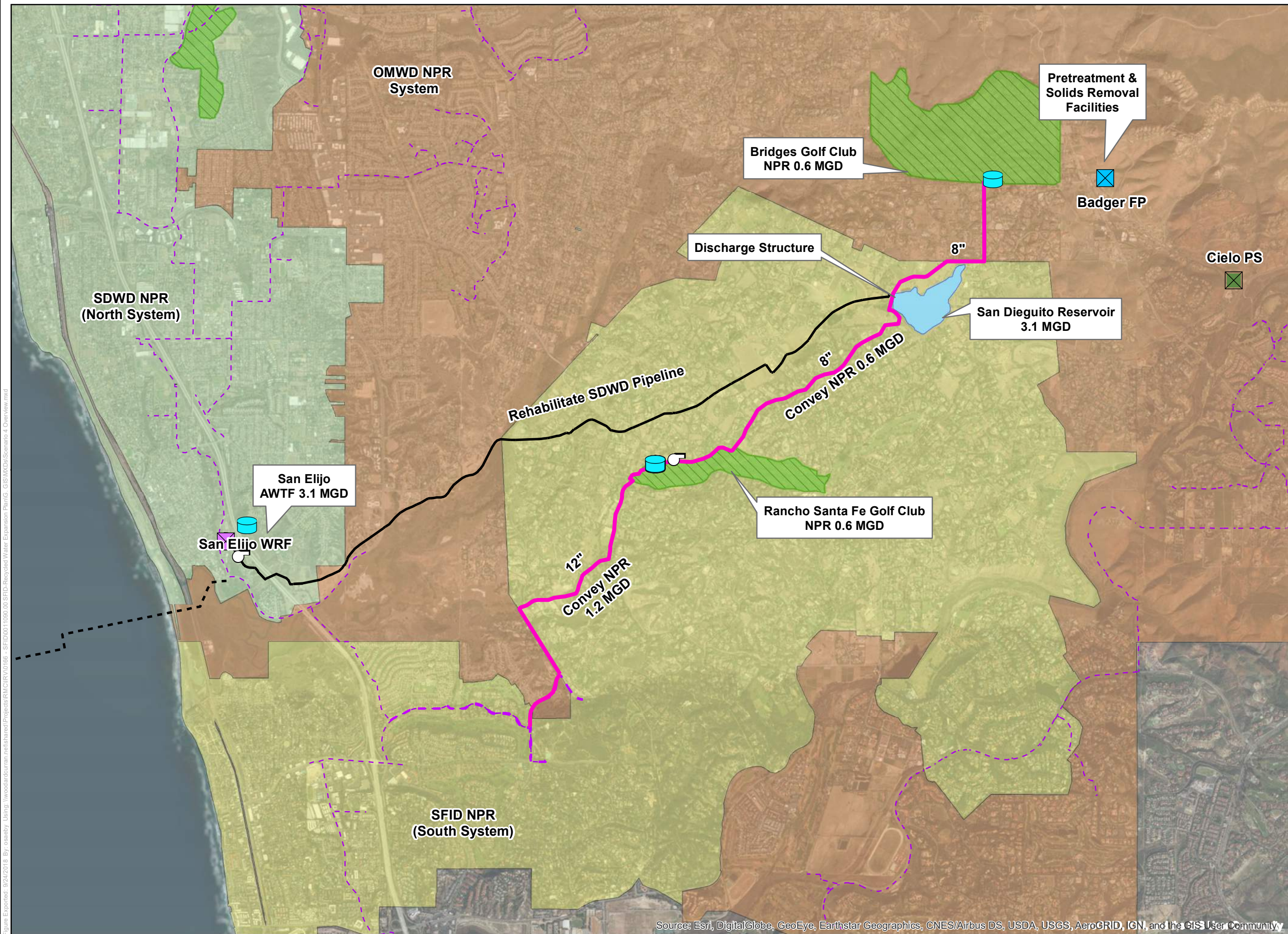
Project #: 0011090
Map Created: August 2018

Third Party GIS Disclaimer: This map is for reference and graphical purposes only and should not be relied upon by third parties for any legal decisions. Any reliance upon the map or data contained herein shall be at the users' sole risk. **Data Sources:**

Source: Esri, DigitalGlobe, GeoEye, Earthstar Geographics, CNES/Airbus DS, USDA, USGS, AeroGRID, IGN, and the GIS User Community

Figure Exported: 9/26/2018 10:00:00 AM By: osaeby Using: \\woodardcurran.net\shared\Projects\RM\RM\01066 - SFID\0011090.00 SFID-Recycled Water Expansion Plan\GIS\MapXDs\Scenario 3 Overview.mxd

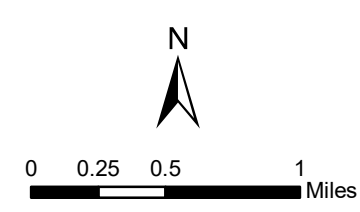




Scenario 4 SWA and NPR Expansion (4,157 AFY)

- Legend**
- SFID
 - OMWD
 - SDWD
 - Existing NPR Pipeline
 - Ocean Outfall
 - SDWD 30" Pipe
 - Proposed Storage Tank
 - Proposed NPR Pipeline
 - Proposed Pump Station

Figure 4



Project #: 0011090
Map Created: August 2018

Third Party GIS Disclaimer: This map is for reference and graphical purposes only and should not be relied upon by third parties for any legal decisions. Any reliance upon the map or data contained herein shall be at the users' sole risk. **Data Sources:**

Figure Exported: 9/24/2018 By: osaeby Using: \\woodardcurran.net\shared\Projects\RMC\RVRV0166 - SFID\0011090.00 SFID-Recycled Water Expansion Plan\GIS\MapDocs\Scenario 4 Overview.mxd

Source: Esri, DigitalGlobe, GeoEye, Earthstar Geographics, CNES/Airbus DS, USDA, USGS, AeroGRID, IGN, and the GIS User Community

SAN ELIJO JOINT POWERS AUTHORITY
MEMORANDUM

May 13, 2019

TO: Board of Directors
San Elijo Joint Powers Authority

FROM: General Manager

SUBJECT: BUILDING AND SITE IMPROVEMENT PROJECT DISCUSSION

RECOMMENDATION

For information only. This is a continuing monthly agenda item to discuss the building and site improvement project.

BACKGROUND

San Elijo Joint Powers Authority (SEJPA) is developing architectural and engineering designs for building and site improvements at the San Elijo Water Reclamation Facility. This project includes updating and modernizing the water campus to replace aging administration, operations, and maintenance buildings, upgrade physical and cyber security measures, improve the potable water and fire-fighting systems, and add new public parking. In addition, solar power, energy efficiency, automation and electrical system upgrades, EV charging stations, and other Climate Action Plan measures will be incorporated into the project design. Transportation improvements include a regional bicycle/pedestrian path connecting Birmingham Drive to Manchester Avenue through SEJPA property, and road crossing enhancements at Manchester Avenue. The bike path, building, and site improvements are being integrated into a single project, which is expected to enter into construction in 2019.

DISCUSSION

This agenda item allows for updates and discussion on the progress of this important multi-agency project, and provides an opportunity for staff to address any questions or concerns from the Board and public. The project update for May is as follows:

Permits and Easements

Permit and easement activities are currently underway with regulatory stakeholders, including the Regional Water Quality Control Board, Army Corps of Engineers, Coastal Commission, and the City of Encinitas (Encinitas). The Regional Board 401 Water Quality Certification is the longest lead permit, with a potential processing time of 12 months. SEJPA staff and project environmental consultant (Helix) are coordinating closely with Regional Board staff to

expedite approval, however the project may be bifurcated to allow early construction of project components not impacted by the 401 Water Quality Certification requirement.

This month, staff will also be submitting a response to Encinitas' Coastal Development Permit (CDP) comments and attending a Coastal Commission hearing on SEJPA's request to adjust an existing open space easement to accommodate the new bike and pedestrian path. Additionally, SEJPA has received project approval from the California Department of Fish and Wildlife.

Project Design

The building and site improvement project design is continuing to be refined with the architect, civil engineering consultants, and construction team in order to provide the best value for the community. The design of the onsite storm water capture and treatment is completed, as is the geotechnical investigation for the building and bike path foundations. The bike path design is nearing completion, and coordination is ongoing with Caltrans on interconnection points for the regional bike path. The traffic study on the Manchester Avenue pedestrian crossing has been completed, and submitted to Encinitas for approval.



Figure 1 Potential photovoltaic site layout

Solar power design elements continue to be evaluated to maximize power generation and provide cost efficiencies (figure 1). A solar consultant has been engaged to develop a preliminary design and engage Solar Services Providers (SSPs) for solar project financing

through a Power Purchase Agreement (PPA). The PPA is a financial agreement where the SEJPA agrees to host the photovoltaic system and purchase the solar electricity produced at a set price. Once solar power rates and financing terms are negotiated with the SSP, staff will present the agreement to the Board for approval consideration. The project will likely include a combination of roof and ground-mounted PV panels, as well as shaded carport structures such as those installed at Alga Norte Park in Carlsbad (figure 2).



Figure 2 Alga North Park

Public outreach and community involvement are continuing. Staff has hosted several meetings to engage the public and to provide a forum for comments. A variety of interested parties submitted project support letters.

FINANCIAL IMPACT

There is no fiscal impact associated with this project update. This is for information only.

Respectfully submitted,

A handwritten signature in black ink, which appears to read "M. Thornton".

Michael T. Thornton, P.E.
General Manager