

# SAN ELIJO

JOINT POWERS AUTHORITY



RECOMMENDED ANNUAL BUDGET

2026 - 2027



SAN ELIJO | JOINT POWERS  
AUTHORITY

# SAN ELIJO JOINT POWERS AUTHORITY



Celebrating 61 years of service



Creating lasting water solutions for our communities & environment



Delivering responsible & reliable service



Promoting opportunities for our communities

## Mission

To serve our communities by providing safe and reliable recycled water and wastewater services in order to protect the environment and public health.

## Vision

We pursue innovative practices to produce clean water in an environmentally, socially, and fiscally responsible manner.

*As an organization, the San Elijo Joint Powers Authority values:*

HUMAN VALUE	PUBLIC TRUST	SAFETY	VALUE	LOYALTY
Provide equal opportunity for all employees to succeed and grow professionally and personally.	Honor and promote public confidence through transparency, personal character, and the highest level of professional behavior.	Ensure individual safety and the safety of co-workers and the public, without compromise.	Provide superior service to the community in a safe, reliable, and cost-effective manner.	Faithfully and reliably promote the best interests of the agency and fellow employees.
COURTESY	RESPONSIBILITY	HONESTY & INTEGRITY	COMMUNITY	
Be respectful, considerate, aware, and caring.	Be accountable for one's conduct and actions.	Be truthful and factual in upholding the values and ethics of the agency.	Demonstrate leadership and stewardship in serving the community and protecting the environment.	

# SAN ELIJO JOINT POWERS AUTHORITY

## RECOMMENDED ANNUAL BUDGET FISCAL YEAR 2026-27

---

### BOARD OF DIRECTORS

LUKE SHAFFER, ENCINITAS COUNCIL MEMBER, CHAIRPERSON

DAVID ZITO, SOLANA BEACH COUNCIL MEMBER, VICE CHAIR

JIM O'HARA, ENCINITAS COUNCIL MEMBER, MEMBER

KRISTI BECKER, SOLANA BEACH COUNCIL MEMBER, MEMBER

### MANAGEMENT

MICHAEL T. THORNTON, P.E., GENERAL MANAGER

THOMAS C. FALK, P.E., PMP, DEPUTY GENERAL MANAGER

CHRISTOPHER A. TREES, P.E., DIRECTOR OF OPERATIONS

KEVIN R. LANG, CPA, DIRECTOR OF FINANCE AND ADMINISTRATION

### MEMBER AGENCIES

CITY OF ENCINITAS

CITY OF SOLANA BEACH

---

2695 Manchester Avenue

Cardiff-by-the Sea, CA 92007

[www.sejpa.org](http://www.sejpa.org)

# TABLE OF CONTENTS

## TRANSMITTAL LETTER > PG. 5

---

## OUR HISTORY AT A GLANCE > PG. 8

---

Our History at a Glance	Pg. 8
Industry Leadership	Pg. 9
Fund Summary	Pg. 10

---

## REVENUE SUMMARY > PG. 11

---

## REVENUE DETAIL > PG. 14

---

City of Encinitas	Pg. 14
City of Solana Beach	Pg. 14
City of Del Mar	Pg. 15
22nd District Agricultural Association (Del Mar Fairgrounds)	Pg. 15
Rancho Santa Fe Community Services District	Pg. 15
City of Escondido	Pg. 16
Laboratory Services	Pg. 16
Recycled Water	Pg. 16

## OPERATING EXPENSE SUMMARY > PG. 17

---

## OPERATING EXPENSE BY PROGRAM > PG. 21

---

Wastewater Treatment	Pg. 21
Laboratory Services	Pg. 24

## *Cost Detail by Program (Continued)*

Ocean Outfall	Pg. 26
Cardiff Sanitary Division Pump Stations	Pg. 29
Encinitas Sanitary Division Pump Station	Pg. 31
City of Encinitas Urban and Stormwater Services	Pg. 33
City of Solana Beach Pump Stations	Pg. 35
City of Solana Beach Generator Maintenance Services	Pg. 38
Del Mar Services	Pg. 40
22nd District Agricultural Association (Del Mar Fairgrounds)	Pg. 42
Leucadia Wastewater District	Pg. 44
Technical Support Services	Pg. 44
Recycled Water	Pg. 46

## CAPITAL PROGRAMS > PG. 50

---

Capital Improvement Project Overview	Pg. 50
Capital Program Funding Summary	Pg. 50
Appropriation Summary	Pg. 52
Wastewater Treatment	Pg. 52
Laboratory Services	Pg. 53
Ocean Outfall Project	Pg. 53
Cardiff Pump Station	Pg. 54
Encinitas Sanitary Division Project	Pg. 55
Solana Beach Pump Station Project	Pg. 55
Recycled Water	Pg. 56

## DEBT SERVICE > PG. 60

---

Wastewater Treatment Debt Service	Pg. 60
Recycled Water Debt Service	Pg. 61
Debt Service Summary	Pg. 62

## CLASSIFICATION AND SALARY SCHEDULE > PG. 63

---

## ORGANIZATIONAL CHART > PG. 64



# TRANSMITTAL LETTER

Honorable Chairperson and Members of the Board of Directors:

I am pleased to present SEJPA’s FY 2026–27 Recommended Budget. As the Agency transitions leadership, our focus remains unchanged—delivering reliable service and protecting the environment through strong fiscal discipline, regional collaboration, and continued investment in our infrastructure. This budget reflects our commitment to responsibly sustaining our facilities, investing in our capital program and workforce, and advancing a culture of stewardship that supports long-term performance and high-quality service to the communities we serve.



**Working Toward a Sustainable Future.** As we strive for a sustainable future, our capital program prioritizes maintaining infrastructure reliability and improving system performance. The San Elijo Water Campus generates approximately 25% of its electrical power through photovoltaic solar production and produces more than 500 million gallons of recycled water annually for irrigation and industrial uses serving the cities of Encinitas, Solana Beach, and Del Mar, as well as portions of Rancho Santa Fe.



**Exceptional Water Treatment.** We are dedicated to providing exceptional water quality. Monitoring studies conducted in 2025 demonstrate that our average removal rates for carbonaceous biochemical oxygen demand (CBOD) and total suspended solids (TSS) were outstanding, at approximately 98.7% and 98.5%, respectively. Our performance continues to meet all NPDES Ocean Discharge Permit requirements, reflecting our commitment to protecting public health and the environment.



**Achieving Highest Levels of Safety.** Safety remains a top priority. We take pride in maintaining a safe work environment through proactive training, low-frequency/high-risk safety reviews, site inspections, and ongoing attention to workplace hazards. These efforts support strong safety performance, reduced risk exposure for our team, and continued achievement of no missed workdays due to injuries over the past 26 years.



**Investing in Our Community and Workforce.** We are committed to preparing the next generation of water leaders through our internship and vocational training programs, which have supported more than 30 students in recent years and resulted in multiple full-time hires. We have also prioritized employee development, competitive compensation, safe and reliable facilities, and responsible resource management, reinforcing SEJPA as an employer of choice.



**Building Valuable Partnerships.** SEJPA continues to be a model of inter-agency collaboration. Through strong partnerships with our member agencies, water district partners, and regional organizations, we deliver high-quality, cost-effective services while maximizing regional benefits and long-term value. These partnerships have also supported significant regional investment, including more than \$30 million in grant funding to advance water reuse projects in North San Diego County.

## OPERATING BUDGET OVERVIEW

The SEJPA budget is organized into 12 operational programs.

For FY 2026–27, total operating costs are projected at \$11,717,007 representing a 4.6% increase over the prior year. This increase is primarily driven by higher personnel costs to support a skilled and reliable workforce, expenses associated with treating wastewater generated during the wet season, and regulatory and infrastructure-related investments to ensure continued system reliability.

<b>Program</b>	<b>Adopted Budget 2025-26</b>	<b>Recommended Budget 2026-27</b>	<b>Budget Change</b>	<b>% Change</b>
Wastewater Treatment	\$ 4,551,366	\$ 4,851,505	\$ 300,139	6.6%
Laboratory Services	1,156,952	1,205,517	48,565	4.2%
Ocean Outfall	1,156,141	1,200,924	44,783	3.9%
Cardiff Sanitary Division Pump Stations	443,583	441,831	(1,753)	-0.4%
Encinitas Sanitary Division Pump Station	203,637	211,476	7,839	3.8%
City of Encinitas Urban and Stormwater Services	66,466	71,544	5,078	7.6%
City of Solana Beach Pump Stations	558,839	576,564	17,725	3.2%
City of Solana Beach Generator Maintenance Services	17,483	18,499	1,016	5.8%
City of Del Mar Pump Station	104,780	108,922	4,142	4.0%
22nd District Agricultural Association (Del Mar Fairgrounds)	192,020	190,596	(1,424)	-0.7%
Leucadia WD Technical Support Services	29,324	33,335	4,011	13.7%
	<u>\$ 8,480,591</u>	<u>\$ 8,910,713</u>	<u>\$ 430,122</u>	<u>5.1%</u>
Recycled Water	2,724,060	2,806,295	82,235	3.0%
Total Operating Expenses	<u>\$ 11,204,651</u>	<u>\$ 11,717,007</u>	<u>\$ 512,357</u>	<u>4.6%</u>

## DEBT SERVICE

Total Debt Service for FY 2026-27 is projected at \$2,373,011, reflecting agency scheduled debt service obligations. These amounts are shared proportionally among participating agencies and contribute to improved financial positioning over time.

## CAPITAL BUDGET OVERVIEW

The Capital Improvement Program (CIP) is designed to support environmental protection, permit compliance, safety, and reliability. The FY 2026–27 CIP includes approximately \$4.5 million in project appropriations, continuing a multi-year strategy focused on replacing aging infrastructure, enhancing resource recovery, and improving system performance at the San Elijo Water Campus and our remote facilities.

## CLOSING

As I present my final budget transmittal, I do so with appreciation for the opportunity to serve SEJPA and the communities we support. Over the past 25 years, the Agency has built a strong foundation grounded in operational excellence, fiscal responsibility, and public trust.

Looking ahead, I am confident in the Agency's continued success under Tom Falk's leadership. Tom's 25 years of engineering experience, operational acumen, and demonstrated commitment to SEJPA's values position him well to guide the next chapter of San Elijo's history.

With this transition, SEJPA remains well-positioned to sustain its high level of service, advance key initiatives, and carry forward sound stewardship of the Agency's people, infrastructure, and public resources.

Respectfully submitted,



Michael T. Thornton, P.E.  
General Manager



Thomas C. Falk, P.E., PMP  
Deputy General Manager

### AWARD-WINNING NORTH COUNTY SAN DIEGO WATER CAREER DAY

SEJPA, along with Leucadia Wastewater District and Olivenhain Municipal Water District, hosted the second annual Water Career Day event in October. This innovative program continues to gain local and state recognition, with the 2024 event receiving the 2025 WaterReuse California Outreach & Education Award and the 2025 event earning the 2025 CWEA Community Engagement & Outreach Award. SEJPA looks ahead to the 2026 event, where we will welcome more than 80 high school and college students will be welcome back to introduced to careers in the water industry.





## OUR HISTORY AT A GLANCE

Up to the early 1950s, Solana Beach and Cardiff-by-the-Sea relied on privately-owned septic systems for wastewater treatment and disposal. As the communities grew, the Cardiff Sanitation District and the Solana Beach Sanitation District formed to collect, treat, and dispose of wastewater. The districts built independent facilities in the San Elijo Lagoon to provide basic treatment before discharging the effluent directly into the lagoon. Within a decade, authorities determined that water quality in the lagoon was deteriorating, and that additional improved treatment was needed. In 1963, Cardiff Sanitation District and Solana Beach Sanitation District joined hands to form what is now the San Elijo Joint Powers Authority (SEJPA). Established under state law to protect public health and the environment, in 1965 the newly formed entity built the San Elijo water pollution control facility and a 4,000-foot-long ocean outfall.

Since then, SEJPA has evolved, adding ocean disposal services to the City of Escondido (1974) and increasing the outfall length to 1.5 miles offshore, building new treatment (1991) to comply with the Clean Water Act, constructing water recycling infrastructure (2000), adding microfiltration and reverse osmosis treatment (2013) to enhance recycled water quality, providing wastewater treatment to the City of Del Mar (2017), adding clean water services for 22nd District Agricultural Association (2022), and providing operational support services to Leucadia Wastewater District (2022).

As we begin our seventh decade of service, the San Elijo Joint Powers Authority builds on its strong history to guide a bright future, remaining steadfast in our commitment to serve our local communities and protect the water environment through a wide range of clean water programs. Now more than ever, our focus remains on providing high-quality, reliable water treatment and recycling to support a sustainable future for the communities we serve.

### SHARING OUR WATER STORY

We love to share our story. During Water Campus tours, students and teachers see the treatment process for wastewater and water recycling. In a typical year, we welcome more than 900 local students and teachers to the campus. To accommodate distance-learning, we produced a virtual tour to expand our water education outreach.





## INDUSTRY LEADERSHIP

Most recently in 2024, the San Elijo Joint Powers Authority was recognized by both the California Water Environment Association and the California Sanitation Risk Management Association for its leadership in promoting safe work practices within the industry. Building on our legacy of excellence, our agency has consistently received accolades for innovative treatment applications, efficient utility operations, and exceptional treatment performance. We believe that fostering collaboration and knowledge sharing with our peers is integral to achieving sustained success.

## CELEBRATING ACCOMPLISHMENTS



We are proud to support the professional development of our employees. Recent accomplishments include:

### CERTIFICATIONS AND DEGREES

**Didra Felix**

Laboratory Analyst Certification – Grade 2

**Evan Fox**

Associate of Science Degree – Water Technology

Associate of Science Degree – Wastewater Technology

Wastewater Treatment Plant Operator – Grade 3

**Winston Friedly**

Electrical and Instrumentation Certification – Grade 2

**America Hernandez**

Bachelor of Science Degree – Mechanical Engineering

**Joshua McTaggart**

Associate of Science Degree – Water Technology

Associate of Science Degree – Wastewater Technology

Water Distribution Operator – Grade 2

**Javier Perez**

Master of Science Degree - Biochemistry

**Yani Reyes-Heyer**

Bachelor of Science Degree – Business Administration

**Dan Verdon**

Laboratory Analyst Certification – Grade 3

# FUND SUMMARY

The SEJPA budget includes the following categories: Wastewater Services, Wastewater Capital Projects, Recycled Water Services and Capital Projects, and PARS Trust which are presented below.

Wastewater Services Fund supports operating and debt services expenses in Wastewater Treatment, Laboratory Services, Ocean Outfall, Pump Station Operations, and other services programs. Capital expenses for these programs are accounted for under the Wastewater Capital Projects Fund.

The Wastewater Capital Projects Fund supports PayGo projects for all projects under Wastewater Services programs. SEJPA’s FY 2026-27 capital appropriation budget of \$3,121,412 includes \$2,696,412 for Wastewater Treatment projects, \$125,000 for Laboratory projects, \$150,000 for Ocean Outfall projects, and \$150,000 for Pump Station Projects. Please refer to the Capital Programs section for additional details.

Recycled Water Services & Capital Project Fund supports operating, capital, and debt services expenses in the Recycled Water program. FY 2026-27 capital appropriations budget includes \$1,320,000, which will be combined with previous appropriations to fund improvements to treatment system enhancements, valve maintenance and replacements, replacing existing distribution system pumps and motors, and ongoing system asset management. The \$10 million debt revenue is the private placement loan for the above-mentioned projects to smooth cashflow requirements.

The PARS Trust Fund accounts for an irrevocable Section 115 Trust established to serve as a pension rate stabilization program, facilitating the prefunding of employee benefit plan obligations. Although a contribution to the PARS Trust has not been budgeted, as provided by SEJPA’s Board of Directors, unspent budgetary funds may be used to provide funding for the PARS Trust Fund.

FUND SUMMARY						
	Wastewater Services	Wastewater Capital Projects	Recycled Water Services	Recycled Water Capital Projects	PARS Trust	Total
<b>Revenues</b>						
Operating	\$ 8,733,702	\$ -	\$ 3,553,532	\$ -	\$ -	\$ 12,287,234
Capital	-	3,121,412	-	-	-	3,121,412
Debt	1,389,713	-	-	-	-	1,389,713
Other	177,010	149,068	114,715	187,947	75,000	703,740
<b>Total Revenues</b>	<b>\$ 10,300,426</b>	<b>\$ 3,270,480</b>	<b>\$ 3,668,246</b>	<b>\$ 187,947</b>	<b>\$ 75,000</b>	<b>\$ 17,502,099</b>
<b>Expenses</b>						
Operating	\$ 8,910,713	\$ -	\$ 2,806,295	\$ -	\$ -	\$ 11,717,007
Capital	-	2,350,000	-	1,125,000	-	3,475,000
Debt Service	1,389,713	-	983,298	-	-	2,373,011
<b>Total Expenses</b>	<b>\$ 10,300,426</b>	<b>\$ 2,350,000</b>	<b>\$ 3,789,593</b>	<b>\$ 1,125,000</b>	<b>\$ -</b>	<b>\$ 17,565,018</b>
Increase/(Decrease)	\$ -	\$ 920,480	\$ (121,347)	\$ (937,053)	\$ 75,000	\$ (62,920)
Funds Available Beginning of the Year	-	3,011,033	3,689,028	8,455,807	1,097,622	16,253,490
<b>Funds Available End of the Year</b>	<b>\$ -</b>	<b>\$ 3,931,513</b>	<b>\$ 3,567,681</b>	<b>\$ 7,518,755</b>	<b>\$ 1,172,622</b>	<b>\$ 16,190,570</b>

# REVENUE SUMMARY

## BASIS FOR REVENUE BY SOURCE

SEJPA’s revenue is based on the cost of service and miscellaneous revenue sources. Influent and effluent flow percentages are used to allocate the operating and maintenance costs. Capital costs are allocated to program participants based on owned or leased capacity.

- Influent flow is the basis for Wastewater and Laboratory Services costs.
- Effluent flow is the basis for the Ocean Outfall costs.
- Capacity is the basis for capital appropriations and debt services.

Below is a table of the 3-year average daily influent, effluent, and owned/leased capacity data for each member and leasing agency:

Entity	Influent		Effluent		Wastewater Treatment Capacity		Outfall Capacity	
	MGD	%	MGD	%	MGD	%	MGD	%
City of Encinitas	1.342	45.4%	0.750	6.8%	2.200	41.9%	2.250	8.8%
City of Solana Beach	1.022	34.5%	0.537	4.9%	2.200	41.9%	2.250	8.8%
Rancho Santa Fe CSD	0.187	6.3%	0.100	0.9%	0.250	4.8%	0.250	1.0%
City of Del Mar	0.408	13.8%	0.207	1.9%	0.600	11.4%	0.600	2.4%
City of Escondido	-	0.0%	9.407	85.5%	-	0.0%	20.150	79.0%
<b>Total</b>	<b>2.960</b>	<b>100.0%</b>	<b>11.001</b>	<b>100.0%</b>	<b>5.250</b>	<b>100.0%</b>	<b>25.500</b>	<b>100.0%</b>

The Laboratory Services program provides analytical services to:

- Fairbanks Ranch Community Service District (CSD)
- Rancho Santa Fe CSD
- Santa Fe Valley CSD
- Whispering Palms CSD
- San Ysidro Border Facility

The FY 2026-27 adopted laboratory budget is based on projected service levels. The analytical service revenues may vary based upon the actual number of samples analyzed for our customers.

The Recycled Water Program generates revenue from multiple customer classes with varying levels of service. In September 2025, the Board accepted the 2025 Recycled Water Cost-of-Service Study and approved recycled water rates for a four-year period covering calendar years 2026 through 2029. The approved rate adjustments become effective January 1 of each year. The FY 2026–27 Recommended Budget incorporates the adopted rate increases. A significant change reflected in this budget is the expiration of incentive revenues historically received by the Recycled Water Program from the San Diego County Water Authority (CWA) and the Metropolitan Water District of Southern California (MWD). The program had received these incentives for approximately 25 years; however, the incentive payments ended September 1, 2025.

## *FY 2025-26 ESTIMATED ACTUAL REVENUE*

Across all programs of the San Elijo Joint Powers Authority, total FY 2025-26 estimated revenues are estimated to be \$16,066,296, which is \$213,842 or 1.3% lower than budget.

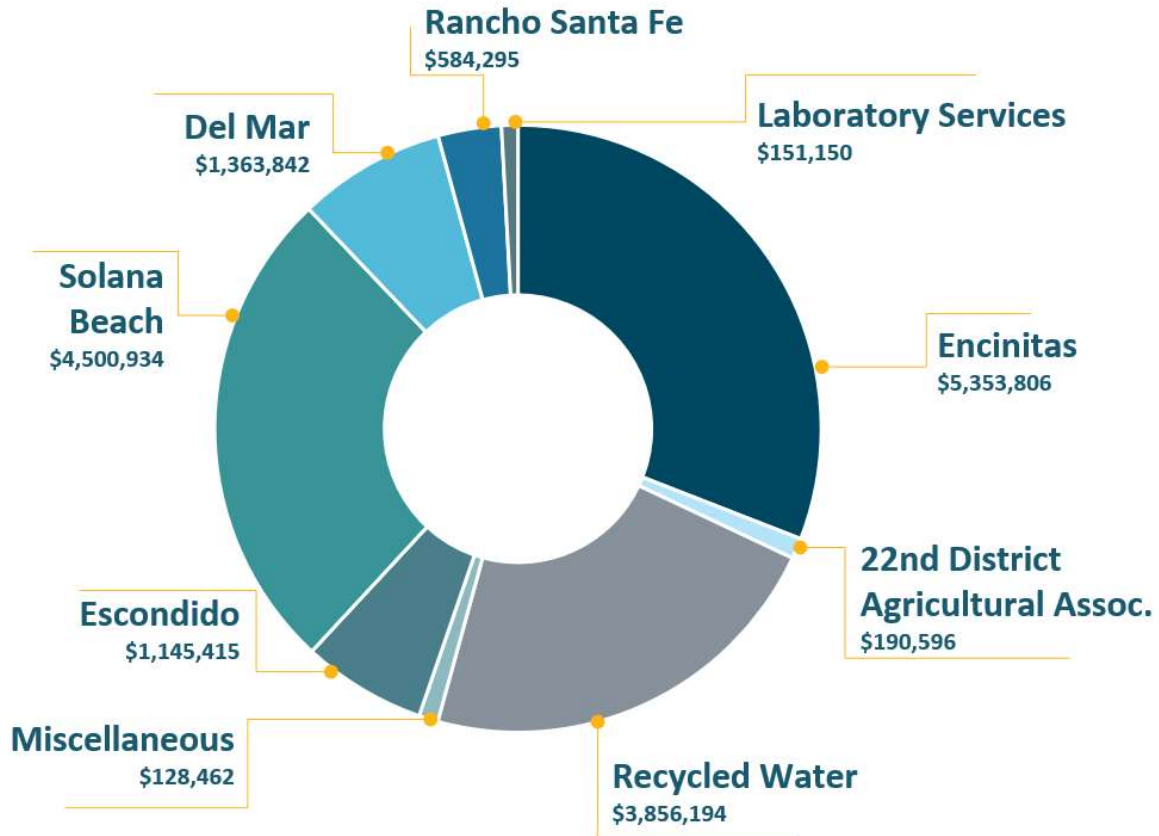
## *FY 2026-27 RECOMMENDED REVENUE BUDGET*

The FY 2026-27 recommended budget includes a total revenue forecast of \$17,323,242, which is \$1,043,105 or a 6.4% increase from the prior fiscal year. Key contributors to year-over-year budget changes include:

- Personnel cost increases of 6.1% across all programs, reflecting continued efforts to attract and retain a high-quality workforce in a competitive labor market. The year-over-year increase also accounts for rising benefit and pension obligations.
- Increased maintenance services costs of approximately \$62,000 for cleaning one of the three digesters. SEJPA targets cleaning and inspection of each tank every five years, to ensure operational performance and maintain assets in this aggressive environment.
- Engineering and professional services to support wastewater and recycled water treatment improvements, along with specialized SCADA consulting, to enhance ongoing operations and prepare for planned capital improvements in the coming years.
- Increase in wastewater capital appropriations to collect additional PayGo funding for upcoming capital needs expected to be identified during the 2025 Facility Plan, which will outline capital needs for the next decade to address state of good repair projects to support SEJPA's aging infrastructure.
- Recycled water rates for the period July 1, 2026, through December 31, 2026, are set at the approved rate of \$2,185 per acre-foot. Consistent with the adopted Study, a 10% rate increase will take effect January 1, 2027, resulting in a rate of \$2,403 per acre-foot for the period January 1, 2027, through June 30, 2027.
- Scheduled increase in recycled water purchase volume by the Encinitas Ranch Golf Authority.

Below is a summary of revenue sources shown in both table and chart format to illustrate the revenue diversity among the agencies we serve.

Revenue Source	Actual 2023-24	Actual 2024-25	Estimated Actual 2025-26	Adopted Budget 2025-26	Recommended Budget 2026-27
City of Encinitas	\$ 4,787,939	\$ 4,622,870	\$ 4,856,481	\$ 4,938,041	\$ 5,353,806
City of Solana Beach	3,433,547	3,579,851	4,030,964	4,070,609	4,500,934
City of Del Mar	1,021,804	1,076,643	1,228,935	1,245,700	1,363,842
22nd District Agricultural Association	168,356	166,151	181,920	192,020	190,596
Rancho Santa Fe CSD	462,921	446,866	509,411	516,613	584,295
City of Escondido	911,963	981,482	1,108,951	1,130,552	1,145,415
Laboratory Services	124,796	131,751	136,334	136,100	151,150
Recycled Water	3,198,229	3,795,539	3,377,721	3,399,250	3,553,532
T-Mobile Cell Site Lease	28,933	33,718	34,730	34,730	34,730
Other Revenue	60,022	31,497	68,984	67,331	73,844
Interest on Wastewater Operations	88,431	52,543	96,355	26,402	68,437
Interest on Water Reclamation	202,779	561,885	435,510	522,790	302,662
<b>Total Revenue Sources</b>	<b>\$ 14,489,720</b>	<b>\$ 15,480,796</b>	<b>\$ 16,066,296</b>	<b>\$ 16,280,138</b>	<b>\$ 17,323,242</b>



# REVENUE DETAIL

## CITY OF ENCINITAS – REVENUE DETAIL

Revenue Source	Actual 2023-24	Actual 2024-25	Estimated Actual 2025-26	Adopted Budget 2025-26	Recommended Budget 2026-27
Wastewater Treatment	\$ 1,886,556	\$ 1,949,100	\$ 2,025,073	\$ 2,069,842	\$ 2,200,659
RSF CSD Contribution for 2017 Revenue Bonds	(31,861)	(31,861)	(31,871)	(31,871)	(31,817)
Del Mar Contribution for 2017 Revenue Bonds	(76,467)	(76,467)	(76,490)	(76,490)	(76,361)
Del Mar Wastewater Treatment Credit	30,000	30,000	30,000	30,000	30,000
T-Mobile Cell Tower Income	(16,368)	(17,365)	(17,365)	(17,365)	(17,365)
Total Wastewater Revenue	<u>\$ 1,791,859</u>	<u>\$ 1,853,406</u>	<u>\$ 1,929,347</u>	<u>\$ 1,974,117</u>	<u>\$ 2,105,116</u>
Laboratory Services	388,077	425,137	456,152	464,257	478,264
Ocean Outfall	62,430	57,291	65,513	66,942	81,871
Cardiff Sanitary Division Pump Stations	358,477	427,413	418,822	443,583	441,831
Encinitas Sanitary Division Pump Station	211,035	196,579	203,215	203,638	211,477
Encinitas Urban and Stormwater Services	59,530	60,178	64,395	66,467	71,545
2017 Revenue Bonds	669,088	669,288	669,038	669,038	668,163
Capital Projects - Wastewater	572,444	604,578	950,000	950,000	1,195,541
Capital Projects - Cardiff Sanitary Division Pump Stations	75,000	125,000	55,000	55,000	100,000
Capital Projects - Encinitas Sanitary Division Pump Stations	600,000	204,000	45,000	45,000	-
Total Revenue	<u>\$ 4,787,939</u>	<u>\$ 4,622,870</u>	<u>\$ 4,856,481</u>	<u>\$ 4,938,041</u>	<u>\$ 5,353,806</u>

## CITY OF SOLANA BEACH – REVENUE DETAIL

Revenue Source	Actual 2023-24	Actual 2024-25	Estimated Actual 2025-26	Adopted Budget 2025-26	Recommended Budget 2026-27
Wastewater Treatment	\$ 1,420,946	\$ 1,479,687	\$ 1,543,978	\$ 1,567,764	\$ 1,664,992
RSF CSD Contribution for 2017 Revenue Bonds	(31,861)	(31,861)	(31,871)	(31,871)	(31,817)
Del Mar Contribution for 2017 Revenue Bonds	(76,467)	(76,467)	(76,490)	(76,490)	(76,361)
Del Mar Wastewater Treatment Credit	30,000	30,000	30,000	30,000	30,000
T-Mobile Cell Tower Income	(16,368)	(16,368)	(17,365)	(17,365)	(17,365)
Total Wastewater Revenue	<u>\$ 1,326,250</u>	<u>\$ 1,384,990</u>	<u>\$ 1,448,253</u>	<u>\$ 1,472,038</u>	<u>\$ 1,569,449</u>
Laboratory Services	294,832	324,138	347,784	353,964	364,098
Ocean Outfall	46,513	42,147	48,196	49,247	58,620
Solana Beach Pump Stations	497,930	496,131	537,224	545,503	562,879
Solana Beach Urban and Stormwater Services	15,261	14,612	13,168	13,336	13,685
Solana Beach Generator Maintenance Services	11,230	17,967	17,301	17,483	18,499
2017 Revenue Bonds	669,088	669,288	669,038	669,038	668,163
Capital Projects - Wastewater	572,444	604,578	950,000	950,000	1,195,542
Capital Projects - Pump Stations	-	26,000	-	-	50,000
Total Revenue	<u>\$ 3,433,547</u>	<u>\$ 3,579,851</u>	<u>\$ 4,030,964</u>	<u>\$ 4,070,609</u>	<u>\$ 4,500,934</u>

## CITY OF DEL MAR – REVENUE DETAIL

Revenue Source	Actual 2023-24	Actual 2024-25	Estimated Actual 2025-26	Adopted Budget 2025-26	Recommended Budget 2026-27
Wastewater Treatment	\$ 572,039	\$ 573,926	\$ 615,354	\$ 628,958	\$ 668,369
Laboratory Services	118,110	129,185	138,610	141,073	145,255
Ocean Outfall	17,978	16,238	18,569	18,974	22,596
Del Mar Wastewater Treatment Credit*	(60,000)	(60,000)	(60,000)	(60,000)	(60,000)
Del Mar Pump Station	64,676	74,554	104,487	104,780	108,922
2017 Revenue Bonds	152,934	152,934	152,980	152,980	152,723
Capital Projects - Wastewater	156,066	164,806	258,935	258,935	325,976
Capital Projects - Pump Stations	-	25,000	-	-	-
Total Revenue	<u>\$ 1,021,804</u>	<u>\$ 1,076,643</u>	<u>\$ 1,228,935</u>	<u>\$ 1,245,700</u>	<u>\$ 1,363,842</u>

\*Estimated to end in 2036

## 22ND DISTRICT AGRICULTURAL ASSOCIATION (DEL MAR FAIRGROUNDS) – REVENUE DETAIL

Revenue Source	Actual 2023-24	Actual 2024-25	Estimated Actual 2025-26	Adopted Budget 2025-26	Recommended Budget 2026-27
Del Mar Fairgrounds	\$ 168,356	\$ 166,151	\$ 181,920	\$ 192,020	\$ 190,596
Total Revenue	<u>\$ 168,356</u>	<u>\$ 166,151</u>	<u>\$ 181,920</u>	<u>\$ 192,020</u>	<u>\$ 190,596</u>

## RANCHO SANTA FE COMMUNITY SERVICES DISTRICT – REVENUE DETAIL

Revenue Source	Actual 2023-24	Actual 2024-25	Estimated Actual 2025-26	Adopted Budget 2025-26	Recommended Budget 2026-27
Wastewater Treatment	\$ 269,532	\$ 250,441	\$ 268,518	\$ 274,454	\$ 307,137
Laboratory Services	55,651	56,372	60,484	61,559	66,749
Ocean Outfall	8,989	7,663	8,763	8,954	10,951
2017 Revenue Bonds	63,723	63,723	63,742	63,742	63,635
Capital Projects	65,026	68,668	107,905	107,905	135,824
Total Revenue	<u>\$ 462,921</u>	<u>\$ 446,866</u>	<u>\$ 509,411</u>	<u>\$ 516,613</u>	<u>\$ 584,295</u>



### PROMOTING SUSTAINABILITY

As California faces cyclical droughts, local supplies of recycled water are more important than ever. In Cardiff, Ada Harris Elementary School saves money and conserves natural resources by using recycled water.

## CITY OF ESCONDIDO – REVENUE DETAIL

Revenue Source	Actual 2023-24	Actual 2024-25	Estimated Actual 2025-26	Adopted Budget 2025-26	Recommended Budget 2026-27
Ocean Outfall	\$ 832,943	\$ 866,114	\$ 990,422	\$ 1,012,023	\$ 1,026,885
Capital Projects	79,020	115,369	118,530	118,530	118,530
Total Revenue	<u>\$ 911,963</u>	<u>\$ 981,482</u>	<u>\$ 1,108,951</u>	<u>\$ 1,130,552</u>	<u>\$ 1,145,415</u>

## LABORATORY SERVICES – REVENUE DETAIL

Revenue Source	Actual 2023-24	Actual 2024-25	Estimated Actual 2025-26	Adopted Budget 2025-26	Recommended Budget 2026-27
Fairbanks Ranch	\$ 19,553	\$ 23,508	\$ 27,106	\$ 23,200	\$ 25,850
Rancho Santa Fe CSD	22,879	26,228	29,948	27,200	30,550
Santa Fe Valley	38,659	34,577	33,411	37,000	40,400
Whispering Palms	22,426	27,626	30,608	28,300	32,150
San Ysidro Boarder Patrol Facility	21,279	19,812	15,261	20,400	22,200
Total Revenue	<u>\$ 124,796</u>	<u>\$ 131,751</u>	<u>\$ 136,334</u>	<u>\$ 136,100</u>	<u>\$ 151,150</u>

## RECYCLED WATER – REVENUE DETAIL

Revenue Source	Actual 2023-24	Actual 2024-25	Estimated Actual 2025-26	Adopted Budget 2025-26	Recommended Budget 2026-27
Santa Fe Irrigation District	\$ 900,693	\$ 1,150,793	\$ 1,195,342	\$ 1,195,342	\$ 1,333,497
San Dieguito Water District	723,830	783,175	803,244	873,440	973,954
Del Mar Fairgrounds	166,965	159,730	153,775	153,775	170,669
Encinitas Ranch Golf Authority	327,504	412,936	441,734	441,734	472,379
Olivenhain Municipal Water District	379,937	568,905	549,626	528,985	603,032
Total Customers	<u>\$ 2,498,929</u>	<u>\$ 3,075,539</u>	<u>\$ 3,143,721</u>	<u>\$ 3,193,275</u>	<u>\$ 3,553,532</u>
MWD/CWA Incentives*	699,300	720,000	234,000	205,975	-
Total Revenue	<u>\$ 3,198,229</u>	<u>\$ 3,795,539</u>	<u>\$ 3,377,721</u>	<u>\$ 3,399,250</u>	<u>\$ 3,553,532</u>

\* - Incentive Revenues from Metropolitan Water District (MWD) and San Diego County Water Authority (CWA) ended in August 2025.

## RECYCLED WATER NET REVENUE

Net Revenue over (under) Expense	Actual 2023-24	Actual 2024-25	Estimated Actual 2025-26	Adopted Budget 2025-26	Recommended Budget 2026-27
Operating Revenue	\$ 3,198,229	\$ 3,795,539	\$ 3,377,721	\$ 3,399,250	\$ 3,553,532
Interest on Water Reclamation	202,779	561,885	435,510	522,790	302,662
Operating Expense	(2,433,318)	(2,594,387)	(2,655,611)	(2,724,060)	(2,806,295)
Debt Service	(964,069)	(981,641)	(984,043)	(984,043)	(983,298)
Net Recycled Water Revenue	<u>\$ 3,621</u>	<u>\$ 781,396</u>	<u>\$ 173,577</u>	<u>\$ 213,938</u>	<u>\$ 66,601</u>

# OPERATING EXPENSE SUMMARY

SEJPA owns and operates the San Elijo Water Campus, San Elijo Recycled Water Utility and is a co-owner of the San Elijo Ocean Outfall. SEJPA also manages several related service programs to support the cities of Encinitas, Solana Beach, and Del Mar, as well as other local government agencies. Operational programs include:

- Wastewater Treatment
- Laboratory Services
- Ocean Outfall
- Cardiff Sanitary Division Pump Stations
- Encinitas Sanitary Division Pump Station
- City of Encinitas Urban & Stormwater Services
- City of Solana Beach Pump Stations
- City of Solana Beach Generator Services
- City of Del Mar Pump Station
- 22nd District Agricultural Association (Del Mar Fairgrounds)
- Leucadia Wastewater District (LWD) Technical Support Services
- Recycled Water

In providing these services, SEJPA seeks to accomplish its mission in an environmentally, socially, and fiscally responsible manner. Except for the Recycled Water program, each of the above programs is funded by the customer base that is served, and cost allocations are applied based on actual flows treated or level of effort provided. The Recycled Water Program is funded by water sales, grants, and incentive programs.

## STAFF ALLOCATION

Budgeting for staff time is based on estimates of actual time required by each program. Below is a table showing the anticipated percentages of direct labor hours for each program in FY 2026-27.

<b>Program</b>	<b>Adopted Staffing Allocation for FY 2026-27</b>
Wastewater Treatment	34.2%
Recycled Water	17.6%
Laboratory Services	15.4%
Ocean Outfall	11.2%
Capital Programs	7.0%
City of Solana Beach Pump Stations	4.6%
Cardiff Sanitary Division Pump Stations	3.7%
Del Mar Fairgrounds	2.4%
Encinitas Sanitary Division Pump Stations	1.7%
City of Del Mar Pump Station	0.9%
City of Encinitas Urban & Stormwater Services	0.7%
Leucadia WD Technical Support Services	0.4%
Solana Beach Generator Services	0.1%
Total	100.0%

## FY 2025-26 ESTIMATED ACTUAL EXPENSE – ALL PROGRAMS

Total cash funding requirements for operations are projected to finish the fiscal year \$185,212 or 1.7% under budget, with all 12 programs anticipated to close the year under budget.

Requested wastewater capital contributions from participating agencies remain unchanged from the Adopted FY 2025–26 budget, however recycled water capital project cash expenditures are projected to exceed the adopted budget. The increase in recycled water capital spending is being fully offset using funding made available through the reprioritization of other planned projects, resulting in no immediate net cash impact.

Debt service costs are projected to be on budget, and requested debt service contributions from program participants are also consistent with the adopted budget.

## FY 2026-27 ADOPTED BUDGET – ALL PROGRAMS

The total FY 2026-27 recommended budget is \$18,531,430 including an \$11,717,007 operating budget, \$4,441,412 capital appropriations, and \$2,373,011 debt service. The operating budget has increased by \$512,357 or 4.6% from the prior year. The capital appropriations are for projects listed in the Capital Program section of this budget book and represent the second-year funding requirements of a three-year capital plan. The debt service budget will remain similar to the prior year’s budget.

<b>Expense</b>	<b>Actual 2023-24</b>	<b>Actual 2024-25</b>	<b>Estimated Actual 2025-26</b>	<b>Adopted Budget 2025-26</b>	<b>Recommended Budget 2026-27</b>
Personnel	\$ 4,643,946	\$ 5,531,620	\$ 5,713,178	\$ 5,740,026	\$ 6,091,960
Supplies and Services	5,166,520	4,941,487	5,306,260	5,240,195	5,412,617
Capital Outlay	130,185	-	-	-	-
Contingency	-	-	-	224,430	212,430
Total Operating Expense	<u>\$ 9,940,651</u>	<u>\$ 10,473,107</u>	<u>\$ 11,019,438</u>	<u>\$ 11,204,651</u>	<u>\$ 11,717,007</u>
Capital Appropriations	2,120,000	3,666,000	3,941,368	3,941,368	4,441,412
Total Operating and Capital Appropriations	<u>\$ 12,060,651</u>	<u>\$ 14,139,107</u>	<u>\$ 14,960,806</u>	<u>\$ 15,146,019</u>	<u>\$ 16,158,419</u>
<b>Debt Service</b>					
2017 Revenue Bonds	1,338,175	\$ 1,338,575	\$ 1,338,075	\$ 1,338,075	\$ 1,336,325
SDG&E Turbo Blower Loan	53,388	53,388	53,388	53,388	53,388
2023 Recycled Water Loan	778,982	778,497	779,039	779,039	778,895
Advanced Water Purification	148,153	148,154	148,154	148,154	148,153
SFID Pipeline Loan	31,134	46,980	46,500	46,500	45,900
Solana Beach Pipeline Loan	5,800	8,010	10,350	10,350	10,350
Total Debt Service	<u>\$ 2,355,632</u>	<u>\$ 2,373,604</u>	<u>\$ 2,375,506</u>	<u>\$ 2,375,506</u>	<u>\$ 2,373,011</u>
Total Expenses	<u>\$ 14,416,284</u>	<u>\$ 16,512,711</u>	<u>\$ 17,336,312</u>	<u>\$ 17,521,525</u>	<u>\$ 18,531,430</u>



## BUILDING PARTNERSHIPS

Good neighbors make good partners. Across from the Water Campus, the Nature Collective and the County of San Diego manage the 800-acre San Elijo Lagoon Ecological Reserve. We share their commitment to protect the lagoon and ocean environments and are proud to be their partner in conservation and education.

## OPERATING EXPENSE DETAIL – ALL PROGRAMS

<b>Operating Expense</b>	<b>Actual 2023-24</b>	<b>Actual 2024-25</b>	<b>Estimated Actual 2025-26</b>	<b>Adopted Budget 2025-26</b>	<b>Recommended Budget 2026-27</b>
<b>Personnel</b>					
Direct Salaries and Wages	\$ 3,240,145	\$ 3,724,515	\$ 3,821,654	\$ 3,882,491	\$ 4,084,698
Medicare Tax	47,049	52,974	58,451	58,450	60,839
State Unemployment Tax	4,957	5,561	3,933	3,956	3,873
Standby Pay	33,599	32,536	33,702	33,697	38,686
Overtime Pay	39,995	43,952	53,633	54,670	58,991
Dental/Vision	35,312	41,768	47,702	43,579	48,865
Employee Assistance Program	968	2,265	1,995	2,001	2,000
Life Insurance/Disability	25,206	32,216	40,960	35,432	39,563
Workers Comp. Insurance	54,621	54,326	75,778	49,828	70,765
Medical Insurance - Pers	435,524	574,656	581,640	628,806	674,194
Retirement Plan - CalPERS & PARS Trust	594,849	812,461	810,803	771,050	819,713
Deferred Comp-employer	110,138	127,943	152,935	152,357	161,438
Uniforms - Boots	4,156	4,305	8,069	8,099	7,875
Payroll Processing Fees	15,512	19,229	18,966	12,652	17,670
Other Personnel Costs	1,914	2,915	2,956	2,958	2,790
	<b>\$ 4,643,946</b>	<b>\$ 5,531,620</b>	<b>\$ 5,713,178</b>	<b>\$ 5,740,026</b>	<b>\$ 6,091,960</b>
<b>Supplies and Services</b>					
Advertising	\$ 7,202	\$ 2,188	\$ 2,738	\$ 4,655	\$ 4,655
Bank Service Charges	5,463	6,799	8,297	8,300	8,300
Board Expense	25,095	7,160	7,301	7,300	7,300
Dues & Memberships	34,121	47,758	48,807	32,136	49,968
Equipment Rental/Lease	14,059	9,189	12,013	12,000	12,000
Fees - Disposal	14,963	-	5,367	1,000	1,000
Fees - Permits	86,475	118,017	106,220	98,050	107,942
Fines	-	-	350	-	-
Fuel	24,262	20,550	22,980	20,938	24,468
Insurance - Liability	44,393	47,568	59,473	59,472	63,632
Insurance - Auto	2,751	2,777	2,700	4,042	4,042
Insurance - Property	123,620	134,587	144,032	143,998	165,637
Licenses	80,714	101,010	139,166	139,149	146,121
Minor Equip - Shop & Field	35,350	28,807	44,229	39,725	39,959
Miscellaneous	-	-	3,003	3,003	3,003
Postage/Shipping	4,257	4,292	6,552	5,291	6,549
Preemployment Screening	1,898	381	1,502	1,503	1,500
Printing	2,428	1,634	3,027	1,992	1,992
Rent	94,397	135,522	116,905	116,918	120,293
Repair Parts Expense	470,963	378,448	426,115	336,345	374,965
Seminars/Education	11,578	11,520	23,861	16,310	23,857
Services - Accounting	76,708	32,850	49,503	50,499	68,833
Services - Sediment Disposal	50,208	26,328	41,373	44,805	44,805
Services - Alarm	8,540	17,254	11,000	12,352	12,350
Services - Biosolids Hauling	242,603	233,272	221,760	264,464	246,327

Operating expense detail continued on next page.

Operating Expense Detail (Continued)

<b>Operating Expense</b>	<b>Actual 2023-24</b>	<b>Actual 2024-25</b>	<b>Estimated Actual 2025-26</b>	<b>Adopted Budget 2025-26</b>	<b>Recommended Budget 2026-27</b>
Services - Engineering	\$ 80,845	\$ 53,147	\$ 141,002	\$ 207,000	\$ 177,000
Services - Fire Control	-	-	4,004	4,000	4,000
Services - Grease & Scum	17,857	23,614	27,031	17,808	23,614
Services - Grit & Screenings	17,407	14,135	27,049	30,050	30,050
Services - Janitorial	55,546	51,214	52,800	52,800	54,384
Services - Laboratory	60,790	53,970	61,392	57,401	59,207
Services - Landscape	87,875	92,096	80,009	80,006	80,010
Services - Legal	73,028	59,127	78,970	78,970	78,970
Services - Lobbying	14,625	26,000	-	24,000	-
Services - Maintenance	269,759	237,904	253,187	238,400	334,600
Services - Medical	4,670	2,279	6,644	6,625	6,649
Services - Other	42,755	14,820	1,624	1,626	1,626
Services - Professional	222,077	164,465	223,002	245,000	247,400
Services - Temp	212,985	118,083	126,240	86,683	96,268
Services - IT/GIS Support	93,940	90,302	87,843	87,844	90,568
Services - Contractors	94,655	90,013	116,867	111,870	111,870
Services - Testing	-	-	1,001	1,001	1,001
Services - Uniforms	9,413	12,501	14,328	10,988	14,756
Subscription	1,524	442	1,199	1,197	1,196
Subsistence - Meals	7,252	8,899	9,083	7,189	9,535
Subsistence - Travel/Rm & Bd	12,697	4,610	17,423	16,015	16,018
Supplies - Chem - Ferric Chloride	203,158	158,270	180,706	146,415	180,171
Supplies - Chem - Odor (Calcium Nitrate)	164,276	89,816	72,294	97,497	76,742
Supplies - Chem - Polymer	68,051	159,541	108,298	129,300	101,112
Supplies - Chem - Sodium Hypochlorite	142,436	224,050	228,669	229,302	186,511
Supplies - Chemicals	113,514	81,891	87,551	80,938	76,470
Supplies - IT Equipment	-	25,774	24,053	24,051	24,054
Supplies - Janitorial	4,390	3,547	3,985	5,000	5,000
Supplies - Lab	179,677	168,614	180,264	180,258	180,263
Supplies - Office	39,398	19,333	33,407	15,002	15,005
Supplies - Safety	20,510	28,107	28,708	23,837	23,835
Supplies - Shop & Field	55,182	37,651	46,759	46,742	46,761
Training	14,792	15,315	16,590	16,602	16,603
Training - Safety	5,127	4,875	10,623	10,621	10,621
Utilities - Gas & Electric	1,045,671	1,099,793	1,122,724	1,135,923	1,176,099
Utilities - Internet	11,783	25,853	27,982	26,003	27,982
Utilities - Telephone	38,916	50,205	43,017	39,492	43,015
Utilities - Trash	5,867	6,710	6,278	6,011	6,278
Utilities - Water	43,019	61,827	50,276	50,280	50,280
Utilities - Water (Suppl.)	29,442	19,186	22,361	24,429	24,429
Utilities - Solar Power	129,670	141,746	133,910	133,903	133,903
Vehicle Maintenance	9,895	33,852	38,834	27,867	29,263
	<u>\$ 5,166,520</u>	<u>\$ 4,941,487</u>	<u>\$ 5,306,260</u>	<u>\$ 5,240,195</u>	<u>\$ 5,412,617</u>
Capital Outlay	\$ 130,185	\$ -	\$ -	\$ -	\$ -
Contingency	-	-	-	224,430	212,430
Total Operating Expense	<u>\$ 9,940,651</u>	<u>\$ 10,473,107</u>	<u>\$ 11,019,438</u>	<u>\$ 11,204,651</u>	<u>\$ 11,717,007</u>

# OPERATING EXPENSE BY PROGRAM

## WASTEWATER TREATMENT

### PROGRAM DESCRIPTION

Wastewater Treatment is the primary cost center for operation and maintenance activities at the San Elijo Water Campus. Activities currently include full secondary wastewater treatment for the cities of Encinitas, Solana Beach, and Del Mar, as well as the Rancho Santa Fe Community Services District, with the effluent being recycled or disposed to the ocean. Wastewater biosolids are treated and dewatered, then hauled by contractors to a privately-operated land application site in Arizona for beneficial reuse.

### FY 2025-26 ESTIMATED ACTUAL EXPENSE

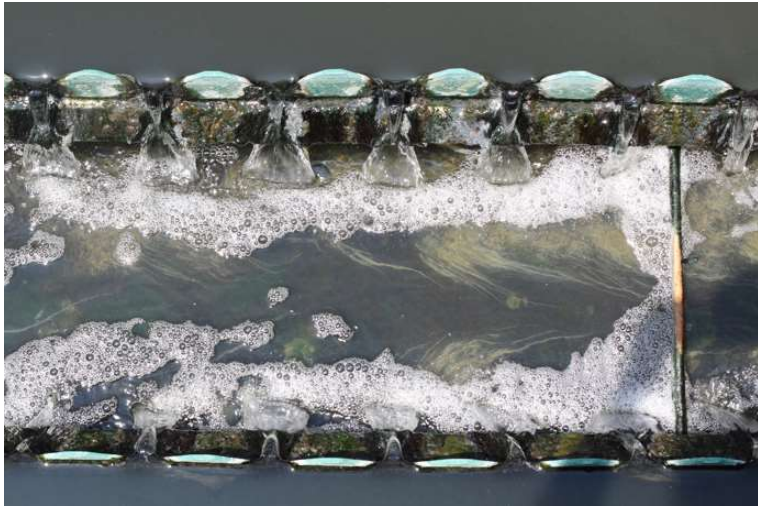
Actual operating expenses for the Wastewater Treatment program are expected to be under budget by \$28,219 or 0.3%. Personnel costs were basically flat; however, supplies and services are expected to be over budget by \$43,824, offset with available contingency of \$76,000.

### FY 2026-27 RECOMMENDED EXPENSE BUDGET

The total FY 2026-27 recommended budget is \$8,937,630 including a \$4,851,505 operating budget, \$2,696,412 capital appropriations, and \$1,389,713 debt service. The operating budget is \$300,139 or 6.6% above the prior year’s budget. Personnel expenses are planned to increase by \$148,324 or 6.9%, reflecting continued efforts to attract and retain a high-quality workforce in a competitive labor market. The year-over-year increase also accounts for rising benefit and pension obligations. Supplies and Services are budgeted to increase by \$151,815 or 6.6% with increases in maintenance services due to higher digester cleaning costs and expanded engineering, professional, and SCADA services to support treatment efficiencies, and offset by savings in chemicals and biosolids hauling. The Contingency budget is set at \$76,000, consistent with last year’s funding level.

### Wastewater Treatment Expense Summary

Expense	Actual 2023-24	Actual 2024-25	Estimated Actual 2025-26	Adopted Budget 2025-26	Recommended Budget 2026-27
Personnel	\$ 1,761,544	\$ 2,096,948	\$ 2,165,611	\$ 2,161,654	\$ 2,309,978
Supplies and Services	2,341,436	2,223,311	2,357,536	2,313,712	2,465,527
Capital Outlay	46,093	-	-	-	-
Contingency	-	-	-	76,000	76,000
Total Operating Expense	<u>\$ 4,149,073</u>	<u>\$ 4,320,259</u>	<u>\$ 4,523,147</u>	<u>\$ 4,551,366</u>	<u>\$ 4,851,505</u>
Capital Appropriations	1,225,000	1,265,000	2,110,368	2,110,368	2,696,412
Total Operating and Capital Appropriations	<u>\$ 5,374,073</u>	<u>\$ 5,585,259</u>	<u>\$ 6,633,515</u>	<u>\$ 6,661,734</u>	<u>\$ 7,547,917</u>
Debt Service					
SDG&E Turbo Blower Loan	\$ 53,388	\$ 53,388	\$ 53,388	\$ 53,388	\$ 53,388
2017 Revenue Bonds	1,338,175	1,338,575	1,338,075	1,338,075	1,336,325
Total Debt Service	<u>\$ 1,391,563</u>	<u>\$ 1,391,963</u>	<u>\$ 1,391,463</u>	<u>\$ 1,391,463</u>	<u>\$ 1,389,713</u>
Total Expenses	<u>\$ 6,765,636</u>	<u>\$ 6,977,222</u>	<u>\$ 8,024,978</u>	<u>\$ 8,053,197</u>	<u>\$ 8,937,630</u>



## RECYCLING AND REUSING

At SEJPA, we recycle the majority of the wastewater we treat. That water serves as a reliable local water supply for our communities, strengthening resiliency and reducing dependency on imported water.

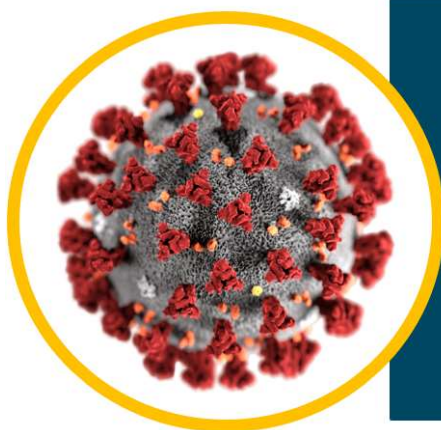
### Wastewater Treatment Operating Expense Detail

Operating Expense	Actual 2023-24	Actual 2024-25	Estimated Actual 2025-26	Adopted Budget 2025-26	Recommended Budget 2026-27
<b>Personnel</b>					
Direct Salaries and Wages	\$ 1,248,431	\$ 1,385,229	\$ 1,461,495	\$ 1,494,002	\$ 1,567,832
Medicare Tax	18,303	19,637	20,856	20,859	22,367
State Unemployment Tax	1,762	2,005	1,406	1,409	1,424
Standby Pay	14,091	14,200	14,932	14,929	17,000
Overtime Pay	14,012	16,011	14,978	20,912	22,646
Dental/Vision	12,689	14,778	17,892	15,551	17,965
Employee Assistance Program	393	803	812	812	824
Life Insurance/Disability	9,024	11,378	15,361	12,642	14,544
Workers Comp. Insurance	22,176	19,210	28,805	17,780	26,018
Medical Insurance - Pers	155,917	203,488	217,309	224,386	247,872
Retirement Plan - CalPERS & PARS Trust	214,647	351,769	305,344	275,146	301,371
Deferred Comp-employer	42,331	47,108	54,941	54,369	59,350
Uniforms - Boots	1,513	1,573	3,285	3,288	3,245
Payroll Processing Fees	5,582	8,747	7,139	4,512	6,496
Other Personnel Costs	674	1,013	1,056	1,057	1,024
	<u>\$ 1,761,544</u>	<u>\$ 2,096,948</u>	<u>\$ 2,165,611</u>	<u>\$ 2,161,654</u>	<u>\$ 2,309,978</u>
<b>Supplies and Services</b>					
Advertising	\$ 5,886	1,095	2,605	2,008	\$ 2,008
Bank Service Charges	5,338	5,369	8,297	8,300	8,300
Board Expense	24,970	6,380	3,647	3,650	3,650
Dues & Memberships	8,004	24,409	25,654	14,935	26,424
Equipment Rental/Lease	11,752	6,798	6,307	6,000	6,000
Fees - Disposal	5	-	1,000	1,000	1,000
Fees - Permits	41,586	57,436	44,997	42,000	46,347
Fuel	1,259	1,367	567	566	595
Insurance - Liability	18,024	19,312	23,641	23,640	25,293
Insurance - Auto	1,117	1,127	1,073	1,607	1,607
Insurance - Property	50,190	54,642	57,236	57,235	65,836
Licenses	26,847	43,904	55,311	55,308	58,079
Minor Equip - Shop & Field	29,597	23,937	30,197	30,194	30,194
Miscellaneous	-	-	3,003	3,003	3,003
Postage/Shipping	3,282	1,196	1,045	2,103	2,604
Preemployment Screening	682	149	601	598	597
Printing	1,162	413	791	792	792
Rent	580	614	520	518	518
Repair Parts Expense	262,270	186,374	220,729	186,118	191,702
Seminars/Education	3,733	3,141	9,684	6,483	9,484

Expense detail continued on next page.

## Wastewater Treatment Operating Expense Detail (Continued)

<b>Operating Expense</b>	<b>Actual 2023-24</b>	<b>Estimated Actual 2024-25</b>	<b>Estimated Actual 2024-25</b>	<b>Adopted Budget 2025-26</b>	<b>Recommended Budget 2026-27</b>
Services - Accounting	38,323	16,425	26,001	26,002	36,851
Services - Sediment Disposal	25,025	2,836	18,594	20,600	20,600
Services - Alarm	3,087	4,788	2,086	4,910	4,910
Services - Biosolids Hauling	242,603	233,272	221,760	264,464	246,327
Services - Engineering	33,215	28,710	37,499	58,500	66,000
Services - Fire Control	-	-	3,003	3,000	3,000
Services - Grease & Scum	17,857	23,614	27,031	17,808	23,614
Services - Grit & Screenings	16,452	14,135	20,000	23,000	23,000
Services - Janitorial	27,773	25,607	26,404	26,400	27,192
Services - Laboratory (Outsource)	2,509	3,495	8,294	4,300	4,429
Services - Landscape	43,326	41,041	40,004	40,003	40,005
Services - Legal	42,980	30,557	39,480	39,483	39,483
Services - Maintenance	129,339	112,184	112,403	112,400	173,800
Services - Medical	1,672	868	2,632	2,634	2,641
Services - Other	169	13,372	308	309	309
Services - Professional	75,705	77,226	63,999	85,000	122,200
Services - Temp	74,688	54,489	68,558	47,982	39,909
Services - IT/GIS Support	36,227	35,191	34,915	34,916	35,998
Services - Contractors	46,757	-	44,999	55,000	55,000
Services - Testing	-	-	1,001	1,001	1,001
Services - Uniforms	3,877	5,071	5,798	4,366	5,866
Subscriptions	1,427	207	478	478	477
Subsistence - Meals	3,783	4,416	3,938	2,857	3,791
Subsistence - Travel/Rm & Bd	5,218	2,117	7,206	6,365	6,366
Supplies - Chem - Ferrous Chlo	203,158	158,270	180,706	146,415	180,171
Supplies - Chem - Odor	51,176	9,276	-	-	-
Supplies - Chem - Polymer	65,999	155,506	103,132	124,132	97,008
Supplies - Chem - Sodium Hypo	2,242	47,051	41,915	41,914	31,245
Supplies - Chemicals	15,668	5,714	18,227	12,239	17,098
Supplies - Janitorial	2,195	1,773	1,997	2,500	2,500
Supplies - Lab	25,100	32,148	32,964	32,964	32,964
Supplies - IT Equipment	-	18,896	9,556	9,559	9,560
Supplies - Office	22,818	7,128	18,926	5,962	5,963
Supplies - Safety	14,294	22,750	14,346	9,476	9,475
Supplies - Shop & Field	46,054	35,769	18,574	18,577	18,585
Training	6,006	5,879	6,601	6,598	6,599
Training - Safety	2,230	2,424	4,222	4,222	4,222
Utilities - Gas & Electric	383,361	391,874	431,930	426,828	436,000
Utilities - Internet	4,784	10,497	11,126	10,337	11,122
Utilities - Telephone	20,922	26,576	22,561	15,696	17,098
Utilities - Trash	2,382	2,452	2,484	2,389	2,495
Utilities - Water	26,428	26,530	30,498	30,500	30,500
Utilities - Water (Suppl.)	-	0	-	2,069	2,069
Utilities - Solar Power	72,525	69,111	72,422	72,421	72,421
Vehicle Maintenance	5,801	26,403	22,052	11,077	11,630
	<u>\$ 2,341,436</u>	<u>\$ 2,223,311</u>	<u>\$ 2,357,536</u>	<u>\$ 2,313,712</u>	<u>\$ 2,465,527</u>
Capital Outlay	\$ 46,093	\$ -	\$ -	\$ -	\$ -
Contingency	-	-	-	76,000	76,000
<b>Total Operating Expense</b>	<u><b>\$ 4,149,073</b></u>	<u><b>\$ 4,320,259</b></u>	<u><b>\$ 4,523,147</b></u>	<u><b>\$ 4,551,366</b></u>	<u><b>\$ 4,851,505</b></u>



### WASTEWATER UNLOCKS HIDDEN HEALTH INSIGHTS

SEJPA is playing a role to advance cutting-edge science, working with industry partners who analyze wastewater to track a wide range of diseases, public health patterns, and overall human health trends. Known as “sewer surveillance” or “wastewater epidemiology,” this approach allows technicians to detect biological markers in wastewater and anticipate shifts in community health. Unlike traditional monitoring methods, wastewater analysis does not rely on patient reporting or access to clinical testing—offering a faster, more comprehensive snapshot of population health.

## LABORATORY SERVICES

### PROGRAM DESCRIPTION

The laboratory located at the San Elijo Water Campus provides analytical services for SEJPA Wastewater, Recycled Water, and Ocean Outfall Programs as well as to other entities through contract agreements. The FY 2026-27 contract agreements include the Fairbanks Ranch Community Services District, the Rancho Santa Fe Community Services District, the Santa Fe Valley Community Services District, the Whispering Palms Community Services District, and the San Ysidro Border Patrol Facility.

### FY 2025-26 ESTIMATED ACTUAL EXPENSE

Overall, Laboratory Services operating expenses are projected to be \$17,589 or 1.5% over budget. Personnel costs are expected to be \$33,888 or 3.9% under budget due to the use of temporary staffing, while supplies and services are projected to exceed budget by \$25,300 or 9.2% for the same reason, as those costs are recorded in that category. Budgeted contingency funds are not expected to be used.

### FY 2026-27 RECOMMENDED BUDGET

The 2026-27 recommended budget is \$1,330,517 including a \$1,205,517 operating budget and \$125,000 in capital appropriations. The operating budget is \$48,565 or 4.2% higher than the prior year budgeted level. Personnel expenses will increase by \$30,909 or 3.5% to reflect increases in staffing and benefit costs. Supplies and Services will also increase by \$17,656 or 6.4% due to increases in permits, insurance, professional services, and other costs. Contingency funding has been set at \$9,000, consistent with last year's funding level



### Laboratory Services Expense Summary

Expense	Actual 2023-24	Actual 2024-25	Estimated Actual 2025-26	Adopted Budget 2025-26	Recommended Budget 2026-27
Personnel	\$ 648,045	\$ 827,607	\$ 839,199	\$ 873,087	\$ 903,996
Supplies and Services	323,474	238,976	300,165	274,865	292,521
Contingency	-	-	-	9,000	9,000
Total Operating Expense	\$ 972,314	\$ 1,066,583	\$ 1,139,363	\$ 1,156,952	\$ 1,205,517
Capital Appropriations	120,000	147,000	125,000	125,000	125,000
Total Operating and Capital Appropriations	\$ 1,092,314	\$ 1,213,583	\$ 1,264,363	\$ 1,281,952	\$ 1,330,517

## Laboratory Services Operating Expense Detail

<b>Operating Expense</b>	<b>Actual 2023-24</b>	<b>Actual 2024-25</b>	<b>Estimated Actual 2025-26</b>	<b>Adopted Budget 2025-26</b>	<b>Recommended Budget 2026-27</b>
<b>Personnel</b>					
Direct Salaries and Wages	\$ 425,376	\$ 553,859	\$ 549,079	\$ 549,239	\$ 580,222
Medicare Tax	6,125	7,889	10,440	10,441	10,075
State Unemployment Tax	994	1,005	708	707	641
Standby	795	880	1,013	1,011	1,161
Overtime Pay	5,343	4,194	6,916	6,919	6,516
Dental/Vision	5,898	6,959	7,342	7,785	8,092
Employee Assistance Program	165	377	329	330	308
Life Insurance/Disability	4,199	5,394	6,286	6,330	6,552
Workers Comp. Insurance	9,286	9,051	11,712	8,902	11,718
Medical Insurance - Pers	72,558	95,738	90,082	112,334	111,640
Retirement Plan - CalPERS & PARS Trust	98,989	118,494	123,319	137,745	135,737
Deferred Comp-employer	14,709	19,843	27,221	27,218	26,733
Uniforms - Boots	694	722	1,336	1,337	1,213
Payroll Processing Fees	2,583	2,708	2,885	2,261	2,926
Other Personnel Costs	332	494	531	528	462
	<u>\$ 648,045</u>	<u>\$ 827,607</u>	<u>\$ 839,199</u>	<u>\$ 873,087</u>	<u>\$ 903,996</u>
<b>Supplies and Services</b>					
Advertising	\$ 106	234	46	789	\$ 789
Equipment Rental/Lease	-	-	2	-	-
Dues & Memberships	1,590	1,817	1,510	618	1,556
Fees - Permits	5,489	12,226	12,226	10,000	12,593
Fuel	221	217	217	215	228
Insurance - Liability	7,547	8,086	9,898	9,898	10,591
Insurance - Auto	468	472	449	673	673
Insurance - Property	21,015	22,880	23,962	23,965	27,567
Licenses	6,211	11,913	23,157	23,159	24,319
Minor Equip - Shop & Field	1,327	1,174	2,821	2,819	2,819
Postage/Shipping	-	1,704	3,926	881	1,090
Preemployment Screening	316	64	252	250	250
Printing	341	789	1,370	332	332
Rent	243	257	201	204	204
Repair Parts Expense	4,490	12,813	3,601	3,601	3,601
Seminars/Education	3,812	5,675	3,396	2,714	3,971
Services - Accounting	95	-	-	1,000	1,000
Services - Janitorial	5,555	5,121	-	-	-
Services - Laboratory	49,334	37,540	41,400	41,401	42,643
Services - Legal	-	507	7,895	7,897	7,897
Services - Maintenance	5,012	2,462	10,403	10,400	10,000
Services - Alarm	-	-	2,058	2,056	2,056
Services - Medical	778	383	1,101	1,103	1,106
Services - Other	14	-	1,001	1,001	1,001
Services - Professional	7,550	-	1,001	1,000	3,500
Services - Temp	64,411	9,105	19,526	2,114	3,290
Services - Uniforms	1,600	2,124	2,426	1,828	2,456
Services - IT/GIS Support	14,684	14,547	14,619	14,620	15,073
Subscriptions	-	26	203	200	200
Subsistence - Meals	398	61	302	1,196	1,587
Subsistence - Travel/Rm & Bd	2,097	178	2,788	2,665	2,665
Supplies - Laboratory	98,350	65,339	66,953	66,952	66,953
Supplies - Chemicals	2,165	303	-	-	-
Supplies - IT Equipment	-	1,969	4,000	4,002	4,003
Supplies - Office	6,330	3,376	2,494	2,496	2,497
Supplies - Safety	1,207	1,152	3,965	3,968	3,967
Supplies - Shop & Field	43	54	7,777	7,779	7,782
Supplies - Janitorial	439	355	145	-	-
Training	2,515	2,784	2,765	2,763	2,763
Training - Safety	600	599	1,770	1,768	1,768
Utilities - Internet	2,003	4,395	4,657	4,328	4,657
Utilities - Telephone	3,589	5,110	3,828	6,572	7,159
Utilities - Trash	997	1,026	1,042	1,000	1,045
Vehicle Maintenance	532	138	4,641	4,638	4,870
	<u>\$ 323,474</u>	<u>\$ 238,976</u>	<u>\$ 300,165</u>	<u>\$ 274,865</u>	<u>\$ 292,521</u>
Capital Outlay	\$ 794	\$ -	\$ -	\$ -	\$ -
Contingency	-	-	-	9,000	9,000
Total Operating Expense	<u>\$ 972,314</u>	<u>\$ 1,066,583</u>	<u>\$ 1,139,363</u>	<u>\$ 1,156,952</u>	<u>\$ 1,205,517</u>

## OCEAN OUTFALL

### PROGRAM DESCRIPTION

This program is the cost center for all operation and maintenance services related to the Ocean Outfall system. These activities include effluent pump station operations and maintenance; ocean monitoring; sampling and testing; and outfall inspection. Outfall capacity is shared through an agreement between SEJPA and the City of Escondido; all operation and maintenance costs are shared based on actual usage (measured by discharged flows). Capital improvement project costs are shared based on leased/owned capacity (79% City of Escondido and 21% SEJPA).

### FY 2025-26 ESTIMATED ACTUAL EXPENSE

Ocean Outfall's estimated operating expenses are expected to be under budget by \$24,678 or 1.9% due to reduced personnel expenses, offset by higher energy costs. Contingency funding is not expected to be used.

### FY 2026-27 RECOMMENDED ADOPTED BUDGET

Total FY 2026-27 recommended budget is \$1,350,924 including a \$1,200,924 operating budget and \$150,000 in capital appropriations. The operating budget is \$44,783 or 3.9% more than the previous year. Personnel costs are expected to increase \$41,663 or 6.1% to reflect increased labor and benefit costs due to labor market pressures. Supplies and services are expected to remain virtually flat, increasing by \$3,120 or 0.7%, as savings in professional fees related to a biennial dive inspection of the outfall are offset by increases in temporary staffing, utilities, and industry organizations affecting the ocean outfall system. Contingency funding remains at \$25,000, consistent with last year's funding level



#### INSPECTING ASSETS

The San Elijo Ocean Outfall extends 8,000 feet from the shoreline at an end depth of 150 feet below sea level. In 2022, the Outfall Plume Tracking Study was completed. The resulting report confirmed historical findings that the aquatic life and environment are not being impacted by ocean discharge from San Elijo Ocean Outfall. Data showed the outfall was in excellent condition and marine life in the area was thriving.

## Ocean Outfall Expense Summary

Expense	Actual 2023-24	Actual 2024-25	Estimated Actual 2025-26	Adopted Budget 2025-26	Recommended Budget 2026-27
Personnel	\$ 535,513	\$ 627,393	\$ 666,243	\$ 680,130	\$ 721,793
Supplies and Services	429,855	362,060	465,220	451,011	454,131
Capital Outlay	3,484	-	-	-	-
Contingency	-	-	-	25,000	25,000
Total Operating Expense	\$ 968,852	\$ 989,453	\$ 1,131,462	\$ 1,156,141	\$ 1,200,924
Capital Appropriations	100,000	146,000	150,000	150,000	150,000
Total Operating and Capital Appropriations	\$ 1,068,852	\$ 1,135,453	\$ 1,281,462	\$ 1,306,141	\$ 1,350,924

## Ocean Outfall Operating Expense Detail

Operating Expense	Actual 2023-24	Actual 2024-25	Estimated Actual 2025-26	Adopted Budget 2025-26	Recommended Budget 2026-27
<b>Personnel</b>					
Direct Salaries and Wages	\$ 371,824	\$ 427,568	\$ 442,490	\$ 456,287	\$ 481,370
Medicare Tax	5,388	6,070	7,085	7,084	7,327
State Unemployment Tax	589	646	479	480	466
Standby Pay	2,916	3,227	3,703	3,706	4,255
Overtime Pay	3,874	4,152	5,806	5,803	6,280
Dental/Vision	4,204	4,962	5,642	5,282	5,885
Employee Assistance Program	109	269	224	224	224
Life Insurance/Disability	2,994	3,814	4,858	4,294	4,765
Workers Comp. Insurance	6,172	6,454	8,878	6,039	8,522
Medical Insurance - Pers	51,740	68,269	69,024	76,213	81,193
Retirement Plan - CalPERS & PARS Trust	70,442	84,496	96,081	93,453	98,718
Deferred Comp-employer	12,721	14,682	18,464	18,466	19,442
Uniforms - Boots	491	504	905	907	882
Payroll Processing Fees	1,836	1,930	2,248	1,534	2,128
Other Personnel Costs	213	350	357	358	336
	\$ 535,513	\$ 627,393	\$ 666,243	\$ 680,130	\$ 721,793

Expense detail continued on next page.

### OUR OCEAN COMMUNITIES

The communities we serve are where we live, work, and spend time with family and friends. They are also key economic drivers for the region. Protecting water quality supports local businesses, tourism, and coastal industries. Our work helps ensure clean, safe ocean waters for beachgoers, surfers, visitors, and others who enjoy the environment.



*Ocean Outfall Operating Expense Detail (Continued)*

<b>Operating Expense</b>	<b>Actual 2023-24</b>	<b>Actual 2024-25</b>	<b>Estimated Actual 2025-26</b>	<b>Adopted Budget 2025-26</b>	<b>Recommended Budget 2026-27</b>
<b>Supplies and Services</b>					
Advertising	\$ 71	\$ 225	\$ 26	\$ 464	\$ 464
Board Expense	50	312	1,452	1,450	1,450
Bank Service Charges	-	22	-	-	-
Dues & Memberships	10,823	11,124	10,014	5,253	10,315
Equipment Rental/Lease	923	956	2,397	2,400	2,400
Fees - Permits	71	-	2,499	2,500	2,500
Fuel	1,445	1,470	1,022	1,285	1,073
Insurance - Liability	5,016	5,375	6,582	6,580	7,040
Insurance - Auto	311	314	299	447	447
Insurance - Property	13,969	15,208	15,933	15,930	18,324
Licenses	8,891	8,586	15,394	15,394	16,165
Postage/Shipping	351	295	180	585	725
Preemployment Screening	225	44	166	166	166
Printing	237	115	223	220	220
Rent	161	171	153	150	150
Repair Parts Expense	10,847	4,954	11,997	11,997	11,997
Seminars/Education	1,080	724	2,882	1,804	2,640
Minor Equip - Shop & Field	-	712	1,708	1,706	1,706
Services - Accounting	15,310	6,570	7,403	7,400	7,773
Services - Janitorial	5,555	5,121	10,559	10,560	10,877
Services - Landscape	17,331	20,135	16,002	16,001	16,002
Services - Laboratory	622	-	-	-	-
Services - Legal	5,835	9,115	7,901	7,899	7,899
Services - Maintenance	19,954	5,584	13,103	13,100	13,100
Services - Medical	555	264	731	733	735
Services - Other	17,524	1,424	14	16	16
Services - Professional	71,324	31,655	65,402	66,000	45,480
Services - IT/GIS Support	9,761	9,669	9,717	9,718	10,019
Services - Contractors	10,280	11,240	32,669	32,670	32,670
Services - Temp	29,037	21,795	14,869	14,635	20,899
Services - Uniforms	1,035	1,411	1,610	1,215	1,633
Services - Alarm	-	-	1,365	1,367	1,366
Subscriptions	39	75	133	133	133
Subsistence - Meals	1,096	1,749	1,489	795	1,055
Subsistence - Travel/Rm & Bd	1,639	762	1,853	1,772	1,772
Supplies - IT Equipment	-	1,309	2,663	2,660	2,661
Supplies - Janitorial	439	355	756	1,000	1,000
Supplies - Lab	43,701	59,588	66,952	66,951	66,952
Supplies - Office	2,505	2,656	3,466	1,659	1,660
Supplies - Safety	1,133	578	2,640	2,637	2,637
Supplies - Shop & Field	400	31	5,173	5,170	5,173
Training	1,672	1,701	1,834	1,837	1,837
Training - Safety	719	398	1,173	1,175	1,175
Utilities - Gas & Electric	90,746	87,657	89,779	81,301	86,756
Utilities - Internet	1,331	2,921	3,096	2,877	3,096
Utilities - Telephone	2,691	3,704	2,880	4,369	4,759
Utilities - Trash	663	682	694	665	695
Utilities - Water	870	-	1,799	1,800	1,800
Utilities - Solar Power	21,553	23,212	21,485	21,482	21,482
Vehicle Maintenance	65	92	3,083	3,083	3,237
	<b>\$ 429,855</b>	<b>\$ 362,060</b>	<b>\$ 465,220</b>	<b>\$ 451,011</b>	<b>\$ 454,131</b>
Capital Outlay	\$ 3,484	\$ -	\$ -	\$ -	\$ -
Contingency	-	-	-	25,000	25,000
<b>Total Operating Expense</b>	<b>\$ 968,852</b>	<b>\$ 989,453</b>	<b>\$ 1,131,462</b>	<b>\$ 1,156,141</b>	<b>\$ 1,200,924</b>



## CARDIFF SANITARY DIVISION PUMP STATIONS

### PROGRAM DESCRIPTION

Under this program, SEJPA provides pump station operation and maintenance services to the City of Encinitas' Cardiff Sanitary Division (CSD). These facilities include the Cardiff, Coast Highway, and Olivenhain Pump Stations. The costs incurred are borne solely by CSD.

### FY 2025-26 ESTIMATED ACTUAL EXPENSE

The CSD Pump Stations actual operating expenses are expected to be \$24,762 under budget, or 5.6%. Personnel costs are anticipated to be on budget, with savings \$18,248 in Supplies and Services. Contingency funding is not expected to be used.

### FY 2026-27 RECOMMENDED BUDGET

Total FY 2026-27 adopted budget is \$541,831 including a \$441,831 operating budget and \$100,000 in capital appropriations. The change in the operating budget is relatively flat, with a minor decrease of \$1,753 or 0.4%. Increases to Personnel costs are offset by savings in Supplies and Service where the FY 2025-26 budget included engineering services costs for Arc Flash studies at the pump stations. Contingency funding is \$17,500, consistent with last year's funding level

### Cardiff Sanitary Division Pump Stations Expense Summary

Expense	Actual 2023-24	Actual 2024-25	Estimated Actual 2025-26	Adopted Budget 2025-26	Recommended Budget 2026-27
Personnel	\$ 185,354	\$ 213,624	\$ 226,743	\$ 225,878	\$ 245,023
Supplies and Services	173,122	213,789	192,079	200,205	179,308
Contingency	-	-	-	17,500	17,500
Total Operating Expense	\$ 358,477	\$ 427,413	\$ 418,822	\$ 443,583	\$ 441,831
Capital Appropriations	75,000	125,000	55,000	55,000	100,000
Total Operating and Capital Appropriations	\$ 433,477	\$ 552,413	\$ 473,822	\$ 498,583	\$ 541,831
Cardiff Pump Station	\$ 129,207	\$ 162,165	\$ 159,362	\$ 165,730	\$ 180,085
Coast Blvd Pump Station	61,528	77,369	72,808	71,928	68,567
Olivenhain Pump Station	167,742	187,879	186,652	205,926	193,179
Total Operating Expense	\$ 358,477	\$ 427,413	\$ 418,822	\$ 443,583	\$ 441,831

## Cardiff Sanitary Division Pump Stations Operating Expense Detail

<b>Operating Expense</b>	<b>Actual 2023-24</b>	<b>Actual 2024-25</b>	<b>Estimated Actual 2025-26</b>	<b>Adopted Budget 2025-26</b>	<b>Recommended Budget 2026-27</b>
<b>Personnel</b>					
Direct Salaries and Wages	\$ 129,619	\$ 145,555	\$ 152,242	\$ 154,592	\$ 165,691
Medicare Tax	1,882	2,066	2,231	2,230	2,388
State Unemployment Tax	181	218	150	151	152
Standby Pay	1,392	1,540	1,733	1,736	1,992
Overtime Pay	1,349	1,891	2,082	2,085	2,408
Dental/Vision	1,410	1,666	1,881	1,663	1,918
Employee Assistance Program	38	90	70	71	73
Life Insurance/Disability	1,006	1,292	1,617	1,351	1,553
Workers Comp. Insurance	2,130	2,168	2,965	1,901	2,778
Medical Insurance - Pers	17,377	22,929	22,944	23,989	26,465
Retirement Plan - CalPERS & PARS Trust	23,747	28,379	31,869	29,415	32,177
Deferred Comp-employer	4,363	4,893	5,808	5,813	6,337
Uniforms - Boots	165	171	290	286	288
Payroll Processing Fees	621	648	743	482	694
Other Personnel Costs	74	118	119	113	109
	<b>\$ 185,354</b>	<b>\$ 213,624</b>	<b>\$ 226,743</b>	<b>\$ 225,878</b>	<b>\$ 245,023</b>
<b>Supplies and Services</b>					
Advertising	\$ 24	\$ 54	\$ 4	\$ 201	\$ 201
Dues & Memberships	129	27	93	-	-
Equipment Rental/Lease	-	-	(91)	-	-
Fees - Permits	2,173	3,638	2,801	2,800	2,800
Fine	-	-	350	-	-
Fuel	4,072	2,952	3,081	3,175	3,234
Insurance - Liability	1,731	1,855	2,277	2,270	2,429
Insurance - Auto	107	108	103	154	154
Insurance - Property	4,821	5,249	5,500	5,499	6,324
Licenses	4,620	2,776	5,312	5,312	5,580
Minor Equip - Shop & Field	-	-	1,365	1,365	1,365
Postage/Shipping	-	-	61	203	250
Preemployment Screening	76	15	61	58	58
Printing	80	40	82	76	76
Rent	56	59	52	51	51
Repair Parts Expense	10,577	26,670	32,425	17,990	27,458
Seminars/Education	326	247	780	624	911
Services - Alarm	1,496	7,844	1,191	471	471
Services - Engineering	-	-	21,000	21,000	-
Services - Maintenance	13,309	38,023	8,575	6,700	17,400
Services - Medical	186	90	257	253	254
Services - Other	3	-	-	-	-
Services - Professional	780	1,200	-	-	-
Services - IT/GIS Support	3,369	3,337	3,351	3,354	3,458
Services - Temp	357	-	-	-	-
Services - Uniforms	375	489	561	420	563
Subscriptions	-	6	49	46	46
Subsistence - Meals	91	14	281	275	364
Subsistence - Travel/Rm & Bd	354	41	639	611	612
Supplies - Chemicals	1,425	1,506	1,223	-	-
Supplies - Chem - Odor	45,263	33,753	30,456	55,654	34,949
Supplies - IT Equipment	-	452	918	918	918
Supplies - Janitorial	-	-	(21)	-	-
Supplies - Office	1,281	585	571	573	573
Supplies - Safety	278	571	907	910	910
Supplies - Shop & Field	1,195	12	1,781	1,785	1,786
Training	577	587	637	635	635
Training - Safety	138	138	408	406	406
Utilities - Gas & Electric	67,504	56,706	57,290	59,322	57,703
Utilities - Internet	460	1,008	1,069	993	1,069
Utilities - Telephone	1,911	2,268	2,076	1,508	1,643
Utilities - Trash	229	235	239	229	239
Utilities - Water	2,804	3,044	3,301	3,300	3,300
Vehicle Maintenance	946	1,461	1,064	1,064	1,117
	<b>\$ 173,122</b>	<b>\$ 213,789</b>	<b>\$ 192,079</b>	<b>\$ 200,205</b>	<b>\$ 179,308</b>
Contingency	\$ -	\$ -	\$ -	\$ 17,500.00	\$ 17,500
<b>Total Operating Expense</b>	<b>\$ 358,477</b>	<b>\$ 427,413</b>	<b>\$ 418,822</b>	<b>\$ 443,583</b>	<b>\$ 441,831</b>



## ENCINITAS SANITARY DIVISION PUMP STATION

### PROGRAM DESCRIPTION

Under this program, SEJPA provides pump station operation and maintenance services to the Encinitas Sanitary Division (ESD), for the Moonlight Beach Pump Station, located in the City of Encinitas. The costs incurred are borne solely by the ESD.

### FY 2025-26 ESTIMATED ACTUAL EXPENSE

It is anticipated that the ESD Pump Station operating expenses will end the year on budget, with increases in Personnel costs of \$6,793 and Supplies and Services of \$1,046 offset by available contingency funding.

### FY 2026-27 ADOPTED BUDGET

For FY 2026-27, the recommended budget is \$211,476, solely made up of operating costs and no capital appropriations. Following the completion of the Moonlight Beach Pump Station Rehabilitation project in FY 2024-25 and some minor capital improvements in FY 2025-26. No additional capital appropriations are budgeted for the coming year. The ESD Pump Station operating budget is \$7,839 or 3.8% over the FY 2025-26 budget. Personnel expenses will increase by \$6,793 or 6.2% due to labor-related cost inflation and current work demands. Supplies and Services will increase by \$1,046 or 1.2%, with increases to maintenance and permit costs following the completion of the capital upgrade, offset by the removal of nonrecurring costs in FY 2025-26 for Arc Flash engineering study costs for the pump station. Contingency funding has been set at \$10,000, consistent with last year's funding level

### Encinitas Sanitary Division Pump Station Expense Summary

	Actual 2023-24	Actual 2024-25	Estimated Actual 2025-26	Adopted Budget 2025-26	Recommended Budget 2026-27
<b>Operating Expense</b>					
Personnel	\$ 90,781	\$ 115,278	\$ 109,024	\$ 109,299	\$ 116,092
Supplies and Services	120,254	81,302	94,191	84,338	85,384
Contingency	-	-	-	10,000	10,000
Total Operating Expense	\$ 211,036	\$ 196,579	\$ 203,215	\$ 203,637	\$ 211,476
Capital Appropriations	600,000	204,000	45,000	45,000	-
Total Operating and Capital Appropriations	\$ 811,036	\$ 400,579	\$ 248,215	\$ 248,637	\$ 211,476

## Encinitas Sanitary Division Pump Station Operating Expense Detail

<b>Operating Expense</b>	<b>Actual 2023-24</b>	<b>Actual 2024-25</b>	<b>Estimated Actual 2025-26</b>	<b>Adopted Budget 2025-26</b>	<b>Recommended Budget 2026-27</b>
<b>Personnel</b>					
Direct Salaries and Wages	\$ 63,861	\$ 81,852	\$ 73,670	\$ 74,784	\$ 78,479
Medicare Tax	931	1,170	1,084	1,081	1,132
State Unemployment Tax	88	107	70	73	72
Standby Pay	610	675	818	819	940
Overtime Pay	999	1,276	996	998	1,146
Dental/Vision	671	794	902	806	909
Employee Assistance Program	17	43	35	34	35
Life Insurance/Disability	479	615	779	655	736
Workers Comp. Insurance	983	1,032	1,425	921	1,317
Medical Insurance - Pers	8,275	10,918	10,463	11,627	12,548
Retirement Plan - CalPERS & PARS Trust	11,291	13,514	15,406	14,257	15,256
Deferred Comp-employer	2,169	2,836	2,819	2,817	3,005
Uniforms - Boots	78	81	139	138	136
Payroll Processing Fees	295	309	362	234	329
Other Personnel Costs	34	56	55	55	52
	<u>\$ 90,781</u>	<u>\$ 115,278</u>	<u>\$ 109,024</u>	<u>\$ 109,299</u>	<u>\$ 116,092</u>
<b>Supplies and Services</b>					
Advertising	\$ 11	\$ 125	\$ 2	\$ 88	\$ 88
Dues & Memberships	59	13	38	-	-
Equipment Rental/Lease	-	-	(42)	-	-
Fees - Permits	1,727	3,237	3,237	1,400	3,237
Fuel	1,639	1,582	1,418	1,463	1,489
Insurance - Liability	799	856	1,046	1,048	1,121
Insurance - Auto	50	50	48	71	71
Insurance - Property	2,225	2,423	2,536	2,537	2,919
Licenses	1,733	1,282	2,451	2,452	2,575
Postage/Shipping	-	528	748	93	115
Preemployment Screening	36	7	26	27	26
Printing	38	18	33	35	35
Rent	26	27	25	23	23
Repair Parts Expense	42,990	8,084	4,003	4,000	4,120
Seminars/Education	151	114	360	287	420
Training	266	271	294	293	293
Training - Safety	64	63	189	187	187
Minor Equip - Shop & Field	432	-	203	203	203
Services - Contractors	10,528	-	-	-	-
Services - Engineering	-	-	7,000	7,000	-
Services - Maintenance	2,661	7,751	13,761	4,900	10,000
Services - Uniforms	171	225	254	194	260
Services - Alarm	400	560	350	218	218
Services - Medical	89	42	120	117	117
Services - Professional	360	-	-	-	-
Services - Temp	165	-	-	-	-
Services - Other	1	-	-	-	-
Services - IT/GIS Support	1,555	1,540	1,550	1,548	1,596
Subscriptions	-	3	21	21	21
Subsistence - Meals	42	6	125	127	168
Subsistence - Travel/Rm & Bd	163	174	296	282	282
Supplies - Chem	68	-	-	-	-
Supplies - Chem - Odor	22	-	49	51	-
Supplies - IT Equipment	-	208	426	424	424
Supplies - Janitorial	-	-	(7)	-	-
Supplies - Office	382	270	265	264	264
Supplies - Shop & Field	84	84	826	824	824
Supplies - Safety	372	89	421	420	420
Utilities - Gas & Electric	49,513	49,708	50,100	51,990	51,990
Utilities - Internet	212	465	492	458	493
Utilities - Telephone	856	1,021	926	696	758
Utilities - Trash	106	109	109	106	111
Vehicle Maintenance	258	365	493	491	516
	<u>\$ 120,254</u>	<u>\$ 81,302</u>	<u>\$ 94,191</u>	<u>\$ 84,338</u>	<u>\$ 85,384</u>
Contingency	\$ -	\$ -	\$ -	\$ 10,000	\$ 10,000
<b>Total Operating Expense</b>	<u>\$ 211,036</u>	<u>\$ 196,579</u>	<u>\$ 203,215</u>	<u>\$ 203,637</u>	<u>\$ 211,476</u>



## CITY OF ENCINITAS URBAN AND STORMWATER SERVICES

### PROGRAM DESCRIPTION

Under this program, SEJPA provides stormwater operation and maintenance services to the City of Encinitas. These services include operating the Urban Runoff Treatment Facility, the Phoebe Stormwater Pump Station, and the Storm Drain Sediment Drying and Disposal Program. The Phoebe Stormwater Pump Station and Urban Runoff Treatment Facility provide services to the City of Encinitas Clean Water Program for the protection of local creek, beach, and lagoon water quality. Under the Storm Drain Sediment Drying and Disposal Program, Member Agencies deliver sediment to the San Elijo Water Campus, where the sediment is dewatered, dried, and disposed at a local landfill. This program is designed to comply with current stormwater best management practices and is intended to reduce the overall disposal cost associated with wet sediment. The costs incurred are borne solely by the City of Encinitas.

### FY 2025-26 ESTIMATED ACTUAL EXPENSE

The City of Encinitas facilities, which include the Phoebe Stormwater Pump Station, the Urban Runoff Treatment Facility, and the Storm Drain Sediment Drying and Disposal program, are anticipated to end the year \$2,071 or 3.1% below budget, with the budget savings comprised of unspent Contingency Funds.

### FY 2026-27 ADOPTED BUDGET

The operating budget for these programs is \$71,544, which is \$5,078 or 7.6% above the prior fiscal year budget with \$2,010 Contingency funding designated for these programs, which is consistent with last year's funding level.

### City of Encinitas Urban and Stormwater Services Expense Summary

Expense	Actual 2023-24	Actual 2024-25	Estimated Actual 2025-26	Adopted Budget 2025-26	Recommended Budget 2026-27
Personnel	\$ 36,628	\$ 40,646	\$ 42,026	\$ 41,907	\$ 45,387
Supplies and Services	22,904	19,531	22,369	22,549	24,147
Contingency	-	-	-	2,010	2,010
Total Operating Expense	<u>\$ 59,531</u>	<u>\$ 60,178</u>	<u>\$ 64,395</u>	<u>\$ 66,466</u>	<u>\$ 71,544</u>
Storm Drain Pump Stations	\$ 14,385	\$ 11,964	\$ 13,378	\$ 13,566	\$ 14,617
Urban Runoff Station	25,743	28,627	29,595	28,469	31,989
Storm Drain Sediment Drying	19,403	19,587	21,421	24,431	24,938
Total Operating Expense	<u>\$ 59,531</u>	<u>\$ 60,178</u>	<u>\$ 64,395</u>	<u>\$ 66,466</u>	<u>\$ 71,544</u>

City of Encinitas Urban and Stormwater Services Operating Expense Detail

	Actual 2023-24	Actual 2024-25	Estimated Actual 2025-26	Adopted Budget 2025-26	Recommended Budget 2026-27
<b>Operating Expense</b>					
<b>Personnel</b>					
Direct Salaries and Wages	\$ 26,426	\$ 28,242	\$ 28,335	\$ 28,819	\$ 30,934
Medicare Tax	382	399	417	412	439
State Unemployment Tax	33	39	31	28	28
Standby Pay	212	235	259	262	300
Overtime Pay	210	260	336	340	384
Dental/Vision	255	305	348	307	352
Employee Assistance Program	7	17	14	14	14
Life Insurance/Disability	184	236	293	251	285
Workers Comp. Insurance	382	397	545	352	510
Medical Insurance - Pers	3,179	4,195	4,256	4,440	4,862
Retirement Plan - CalPERS & PARS Trust	4,298	5,192	5,917	5,443	5,912
Deferred Comp-employer	901	959	1,075	1,075	1,165
Uniforms - Boots	30	31	48	53	53
Payroll Processing Fees	113	119	135	90	128
Other Personnel Costs	13	21	19	21	21
	<u>\$ 36,628</u>	<u>\$ 40,646</u>	<u>\$ 42,026</u>	<u>\$ 41,907</u>	<u>\$ 45,387</u>
<b>Supplies and Services</b>					
Advertising	\$ 4	\$ 10	\$ 1	\$ 31	\$ 31
Dues & Memberships	23	5	14	-	-
Equipment Rental/Lease	-	-	(14)	-	-
Fuel	635	496	545	568	572
Insurance - Liability	311	333	406	407	436
Insurance - Auto	19	19	19	28	28
Insurance - Property	865	942	993	987	1,135
Licenses	1,307	497	954	953	1,001
Minor Equip - Shop & Field	498	-	1,502	497	497
Postage/Shipping	-	-	12	36	45
Preemployment Screening	14	3	7	10	10
Printing	15	7	12	14	14
Rent	10	11	4	8	8
Repair Parts Expense	3,595	2,201	553	553	1,753
Seminars/Education	58	44	143	112	163
Services - Grit & Screenings	-	-	-	-	-
Services - Maintenance	17	5	305	300	300
Services - Medical	34	16	51	45	46
Services - Temp	64	-	-	-	-
Services - Other	1	-	-	-	-
Services - Professional	140	-	-	-	-
Services - Uniforms	65	87	98	76	101
Services - Sediment Disposal	13,426	13,150	14,033	15,450	15,450
Services - Alarm	-	-	84	84	84
Subscriptions	-	1	7	8	8
Subsistence - Meals	16	2	54	49	65
Subsistence - Travel/Rm & Bd	64	7	117	110	110
Supplies - IT Equipment	-	81	164	165	165
Supplies - Office	148	105	107	103	103
Supplies - Safety	50	34	161	163	163
Supplies - Shop & Field	-	-	322	321	321
Training	103	105	112	114	114
Training - Safety	24	25	75	73	73
Services - IT/GIS Support	605	599	603	602	621
Utilities - Internet	82	181	192	178	192
Utilities - Telephone	453	518	500	271	294
Utilities - Trash	41	42	46	42	43
Vehicle Maintenance	215	6	188	191	201
	<u>\$ 22,904</u>	<u>\$ 19,531</u>	<u>\$ 22,369</u>	<u>\$ 22,549</u>	<u>\$ 24,147</u>
Contingency	\$ -	\$ -	\$ -	\$ 2,010	\$ 2,010
Total Operating Expense	<u>\$ 59,531</u>	<u>\$ 60,178</u>	<u>\$ 64,395</u>	<u>\$ 66,466</u>	<u>\$ 71,544</u>



## *CITY OF SOLANA BEACH PUMP STATIONS*

### **PROGRAM DESCRIPTION**

Under this program, SEJPA provides pump station operation and maintenance services to the City of Solana Beach. These facilities include the Eden Gardens, Solana Beach, San Elijo Hills, and Fletcher Cove Pump Stations, Low Flow Diverters located at Fletcher Cove and Seascape Sur, as well as the Storm Drain Sediment Drying and Disposal Program. Under the Storm Drain Sediment Drying and Disposal program, Member Agencies deliver sediment to the San Elijo Water Campus, where the sediment is dewatered, dried, and disposed at a local landfill. This program is designed to comply with current stormwater best management practices and is intended to reduce the overall disposal cost associated with wet sediment. The costs incurred are paid by the City of Solana Beach.

### **FY 2025-26 ESTIMATED ACTUAL EXPENDITURES**

The Solana Beach Pump Stations are expected to be below budget this year by \$8,447 or 1.5%. Personnel expenses are anticipated to be on budget with Supplies and Services costs forecasted to end the year over budget by \$10,877 or 4.4%, which is more than offset by available Contingency funds.

### **FY 2026-27 ADOPTED BUDGET**

Overall, the Solana Beach Pump Stations operating budget is \$576,564, an increase of \$17,725 or 3.2% over the prior year. Personnel costs are projected to rise by \$16,564 or 5.6%, reflecting ongoing operations and maintenance as well as the implementation of a planned rebuild of one of the large pumps at Eden Gardens Pump Station. Supplies and Services show only a minor increase, as inspection-related costs and other increases are largely offset by the absence of one-time engineering services for Arc Flash studies included in the prior year budget. Contingency funding totals \$20,000, consistent with last year's funding level

### City of Solana Beach Pump Stations Expense Summary

<b>Expense</b>	<b>Actual 2023-24</b>	<b>Actual 2024-25</b>	<b>Estimated Actual 2025-26</b>	<b>Adopted Budget 2025-26</b>	<b>Recommended Budget 2026-27</b>
Personnel	\$ 247,502	\$ 286,384	\$ 296,356	\$ 295,680	\$ 312,244
Supplies and Services	265,689	231,625	254,036	243,159	244,320
Contingency	-	-	-	20,000	20,000
Total Operating Expense	<u>\$ 513,191</u>	<u>\$ 518,010</u>	<u>\$ 550,392</u>	<u>\$ 558,839</u>	<u>\$ 576,564</u>
Capital Appropriations	-	26,000	-	-	50,000
Total Operating and Capital Appropriations	<u>\$ 513,191</u>	<u>\$ 544,010</u>	<u>\$ 550,392</u>	<u>\$ 558,839</u>	<u>\$ 626,564</u>
Eden Gardens Pump Station	\$ 175,108	\$ 168,266	\$ 178,637	\$ 183,056	\$ 189,546
Solana Beach Pump Station	205,645	219,174	226,656	233,007	244,018
San Elijo Hills Pump Station	84,858	77,128	90,477	92,900	90,329
Fletcher Cove Pump Station	23,976	30,002	31,725	26,925	28,713
Storm Drain Sediment Drying	15,261	14,612	13,168	13,336	13,685
Seascape Sur Low Flow Diverter	3,825	4,326	4,885	4,907	5,254
Fletcher Cove Low Flow Diverter	4,518	4,502	4,845	4,708	5,020
Total Operating Expense	<u>\$ 513,191</u>	<u>\$ 518,010</u>	<u>\$ 550,392</u>	<u>\$ 558,839</u>	<u>\$ 576,564</u>

### City of Solana Beach Pump Stations Operating Expense Detail

<b>Operating Expense</b>	<b>Actual 2023-24</b>	<b>Actual 2024-25</b>	<b>Estimated Actual 2025-26</b>	<b>Adopted Budget 2025-26</b>	<b>Recommended Budget 2026-27</b>
<b>Personnel</b>					
Direct Salaries and Wages	\$ 173,760	\$ 195,502	\$ 198,610	\$ 202,481	\$ 211,141
Medicare Tax	2,519	2,791	2,910	2,916	3,041
State Unemployment Tax	238	279	190	199	195
Standby Pay	1,827	2,021	2,262	2,261	2,596
Overtime Pay	1,721	3,439	2,719	2,712	3,079
Dental/Vision	1,864	2,197	2,476	2,174	2,444
Employee Assistance Program	51	119	91	92	92
Life Insurance/Disability	1,326	1,703	2,107	1,768	1,978
Workers Comp. Insurance	2,895	2,857	3,913	2,487	3,537
Medical Insurance - Pers	22,909	30,227	30,146	31,369	33,703
Retirement Plan - CalPERS & PARS Trust	31,381	37,411	41,840	38,466	40,978
Deferred Comp-employer	5,873	6,602	7,601	7,601	8,071
Uniforms - Boots	219	227	364	373	366
Payroll Processing Fees	819	855	983	633	883
Other Personnel Costs	101	156	142	148	140
	<u>\$ 247,502</u>	<u>\$ 286,384</u>	<u>\$ 296,356</u>	<u>\$ 295,680</u>	<u>\$ 312,244</u>

Expense detail continued on next page.

City of Solana Beach Pump Stations Operating Expense Detail (Continued)

<b>Operating Expense</b>	<b>Actual 2023-24</b>	<b>Actual 2024-25</b>	<b>Estimated Actual 2025-26</b>	<b>Adopted Budget 2025-26</b>	<b>Recommended Budget 2026-27</b>
<b>Supplies and Services</b>					
Advertising	\$ 33	\$ 73	\$ 6	\$ 276	\$ 276
Dues & Memberships	175	37	114	-	-
Equipment Rental/Lease	-	-	(112)	-	-
Fees - Permits	4,034	7,056	5,315	4,200	5,315
Fuel	5,674	4,068	4,162	4,513	4,370
Insurance - Liability	2,353	2,521	3,081	3,085	3,300
Insurance - Auto	146	147	140	210	210
Insurance - Property	6,552	7,133	7,487	7,472	8,595
Licenses	5,160	3,773	7,230	7,220	7,582
Minor Equip - Shop & Field	-	-	203	203	203
Postage/Shipping	-	42	77	274	339
Preemployment Screening	100	20	76	77	76
Printing	107	54	99	103	103
Rent	76	80	60	71	71
Repair Parts Expense	32,138	25,113	19,083	20,888	21,759
Seminars/Education	443	335	1,064	846	1,236
Services - Sediment Disposal	11,307	10,342	8,229	8,240	8,240
Services - Alarm	1,360	1,931	1,141	641	641
Services - Grit & Screenings	265	-	3,150	3,150	3,150
Services - Maintenance	34,658	13,933	12,894	9,700	17,000
Services - Medical	246	120	351	342	347
Services - Other	4	-	-	-	-
Services - Professional	1,060	-	-	-	-
Services - Uniforms	512	664	749	571	765
Services - IT/GIS Support	4,578	4,535	4,561	4,558	4,700
Services - Temp	485	-	-	-	-
Services - Engineering	-	-	21,000	21,000	-
Subscriptions	0	8	63	62	62
Subsistence - Meals	124	19	376	373	494
Subsistence - Travel/Rm & Bd	481	97	872	832	832
Supplies - Chem - Odor (bioxide)	58,412	46,787	41,788	41,792	41,793
Supplies - IT Equipment	-	614	1,253	1,249	1,249
Supplies - Janitorial	-	-	(21)	-	-
Supplies - Office	1,126	795	784	780	780
Supplies - Safety	772	527	1,240	1,236	1,236
Supplies - Shop & Field	1,979	-	2,434	2,426	2,427
Training	784	798	854	861	861
Training - Safety	187	187	545	550	550
Utilities - Gas & Electric	84,479	92,296	95,552	88,002	98,030
Utilities - Internet	624	1,370	1,445	1,348	1,451
Utilities - Telephone	2,552	2,997	2,725	2,050	2,231
Utilities - Trash	311	320	338	313	326
Utilities - Water	1,665	1,817	2,198	2,200	2,200
Utilities - Solar Power	(40)	-	-	-	-
Vehicle Maintenance	766	1,016	1,433	1,445	1,520
	<u>\$ 265,689</u>	<u>\$ 231,625</u>	<u>\$ 254,036</u>	<u>\$ 243,159</u>	<u>\$ 244,320</u>
Contingency	\$ -	\$ -	\$ -	\$ 20,000	\$ 20,000
<b>Total Operating Expense</b>	<u>\$ 513,191</u>	<u>\$ 518,010</u>	<u>\$ 550,392</u>	<u>\$ 558,839</u>	<u>\$ 576,564</u>



## *CITY OF SOLANA BEACH GENERATOR MAINTENANCE SERVICES*

### PROGRAM DESCRIPTION

Under this program, SEJPA provides generator maintenance services to the City of Solana Beach. The generators are located at the Solana Beach City Hall and the Lomas Santa Fe Fire Station. The costs incurred are borne solely by the City of Solana Beach.

### FY 2025-26 ESTIMATED ACTUAL EXPENDITURES

The Solana Beach Generator Maintenance Services are expected to be on budget, following the application of contingency of \$820, which is consistent with last year’s funding level.

### FY 2025-26 ADOPTED BUDGET

The adopted budget is \$1,016 or 5.8% higher than the prior year with contingency available to cover minor unanticipated repairs as these generators age.

### *City of Solana Beach Generator Maintenance Services Expense Summary*

<b>Expense</b>	<b>Actual 2023-24</b>	<b>Actual 2024-25</b>	<b>Estimated Actual 2025-26</b>	<b>Adopted Budget 2025-26</b>	<b>Recommended Budget 2026-27</b>
Personnel	\$ 8,013	\$ 9,468	\$ 8,801	\$ 8,631	\$ 9,335
Supplies and Services	3,215	8,499	8,499	8,032	8,344
Contingency	-	-	-	820	820
Total Operating Expense	<u>\$ 11,229</u>	<u>\$ 17,967</u>	<u>\$ 17,300</u>	<u>\$ 17,483</u>	<u>\$ 18,499</u>
SB City Hall Generator	\$ 6,443	\$ 6,326	\$ 8,100	\$ 8,711	\$ 9,221
SB Lomas SF Fire Generator	4,786	11,640	9,200	8,772	9,278
Total Operating Expense	<u>\$ 11,229</u>	<u>\$ 17,967</u>	<u>\$ 17,300</u>	<u>\$ 17,483</u>	<u>\$ 18,499</u>

*City of Solana Beach Generator Maintenance Services Operating Expense Detail*

<b>Operating Expense</b>	<b>Actual 2023-24</b>	<b>Actual 2024-25</b>	<b>Estimated Actual 2025-26</b>	<b>Adopted Budget 2025-26</b>	<b>Recommended Budget 2026-27</b>
<b>Personnel</b>					
Direct Salaries and Wages	\$ 5,742	6,715	5,964	5,924	\$ 6,347
Medicare Tax	83	95	85	85	90
State Unemployment Tax	7	8	1	6	6
Standby Pay	48	53	60	60	68
Overtime Pay	46	57	79	74	84
Dental/Vision	57	67	72	64	72
Employee Assistance Program	2	4	-	2	2
Life Insurance/Disability	41	52	61	52	59
Workers Comp. Insurance	109	87	116	72	105
Medical Insurance - Pers	697	919	886	916	1,002
Retirement Plan - CalPERS & PARS Trust	952	1,138	1,219	1,123	1,219
Deferred Comp-employer	195	235	225	221	241
Uniforms - Boots	7	7	4	10	10
Payroll Processing Fees	25	26	28	18	26
Other Personnel Costs	4	5	1	4	4
	<u>\$ 8,013</u>	<u>\$ 9,468</u>	<u>\$ 8,801</u>	<u>\$ 8,631</u>	<u>\$ 9,335</u>
<b>Supplies and Services</b>					
Advertising	\$ 1	\$ 3	\$ 0	\$ 8	\$ 8
Alarm	-	-	28	24	24
Dues & Memberships	7	1	2	-	-
Fuel	416	142	149	156	156
Insurance - Liability	89	95	114	116	124
Insurance - Auto	6	6	5	8	8
Insurance - Property	247	269	288	282	324
Licenses	76	142	276	272	286
Postage/Shipping	-	-	1	10	12
Preemployment Screening	3	1	2	2	2
Printing	4	2	1	4	4
Rent	3	3	1	2	2
Repair Parts Expense	5	13	2,645	3,000	3,000
Seminars/Education	17	13	45	32	46
Training	30	30	28	32	32
Training - Safety	7	7	16	20	20
Services - Maintenance	1,890	6,444	4,243	3,400	3,600
Services - Uniforms	18	25	26	22	28
Services - Medical	7	4	16	12	14
Services - Professional	40	-	-	-	-
Services - Other	0	-	-	-	-
Services - Professional IT Support	173	171	170	172	178
Services - Temp	18	-	-	-	-
Subscriptions	-	0	-	2	2
Subsistence - Meals	5	1	16	14	18
Subsistence - Travel/Rm & Bd	18	2	33	32	32
Supplies - IT Equipment	-	23	49	48	48
Supplies - Office	42	30	37	30	30
Supplies - Shop & Field	-	-	98	92	92
Supplies - Safety	14	947	46	46	46
Utilities - Internet	24	52	51	50	54
Utilities - Telephone	47	60	47	78	84
Utilities - Trash	12	12	19	12	12
Utilities - Solar Power	(4)	-	-	-	-
Vehicle Maintenance	1	2	48	54	58
	<u>\$ 3,215</u>	<u>\$ 8,499</u>	<u>\$ 8,499</u>	<u>\$ 8,032</u>	<u>\$ 8,344</u>
Contingency	\$ -	\$ -	\$ -	\$ 820	\$ 820
<b>Total Operating Expense</b>	<u>\$ 11,228</u>	<u>\$ 17,967</u>	<u>\$ 17,300</u>	<u>\$ 17,483</u>	<u>\$ 18,499</u>



## CITY OF DEL MAR PUMP STATION

### PROGRAM DESCRIPTION

Under this program, SEJPA provides pump station operation and maintenance services that include daily pump station review, after-hours alarm monitoring and emergency response, equipment preventative maintenance, quarterly generator service, PLC programming, instrumentation calibration, wet well cleaning, and disposal of wastewater collection sediment for the City of Del Mar. Additional pump station services requested by the City of Del Mar are also captured through this program with cost reimbursement as provided for in the services agreement. Costs incurred through this program are borne solely by the City of Del Mar.

### FY 2025-26 ESTIMATED ACTUAL EXPENSE

The program is forecast to be on budget following the application of \$2,100 of Contingency funds to overages in Supplies and Services.

### FY 2026-27 RECOMMENDED BUDGET

The recommended FY 2026–27 budget is \$108,922, an increase of \$4,142 or 4.0%. This reflects a \$5,997 or 10.7% increase in personnel costs and a \$1,855 or 4.0% decrease in Supplies and Services. The prior year budget included engineering costs for Arc Flash studies and capital HVAC work at the pump station, which are non-recurring. This year’s budget includes pump seal replacements and associated SEJPA personnel costs to complete this project, contributing to the increase in personnel. No capital appropriations are requested for Del Mar’s pump station, so the increase in operating costs is largely offset by the reduction in capital needs.

### City of Del Mar Pump Station Expense Summary

Expense	Actual 2023-24	Actual 2024-25	Estimated Actual 2025-26	Adopted Budget 2025-26	Recommended Budget 2026-27
Personnel	\$ 46,635	\$ 58,125	\$ 56,441	\$ 55,808	\$ 61,805
Supplies and Services	18,040	19,703	48,045	46,872	45,017
Contingency	-	-	-	2,100	2,100
Total Operating Expense	<u>\$ 64,675</u>	<u>\$ 77,829</u>	<u>\$ 104,486</u>	<u>\$ 104,780</u>	<u>\$ 108,922</u>
Capital Appropriations	-	25,000	-	-	-
Total Operating and Capital Appropriations	<u>\$ 64,675</u>	<u>\$ 102,829</u>	<u>\$ 104,486</u>	<u>\$ 104,780</u>	<u>\$ 108,922</u>

City of Del Mar Pump Station Operating Expense Detail

<b>Operating Expense</b>	<b>Actual 2023-24</b>	<b>Actual 2024-25</b>	<b>Estimated Actual 2025-26</b>	<b>Adopted Budget 2025-26</b>	<b>Recommended Budget 2026-27</b>
<b>Personnel</b>					
Direct Salaries and Wages	\$ 32,442	\$ 41,174	\$ 37,985	\$ 38,193	\$ 41,859
Medicare Tax	471	584	549	551	601
State Unemployment Tax	44	52	39	37	38
Standby Pay	331	367	440	438	503
Overtime Pay	559	386	521	518	588
Dental/Vision	348	409	468	411	483
Employee Assistance Program	14	22	14	17	18
Life Insurance/Disability	247	317	397	334	391
Workers Comp. Insurance	765	532	787	469	699
Medical Insurance - Pers	4,268	5,632	5,662	5,924	6,659
Retirement Plan - CalPERS & PARS Trust	5,848	6,970	7,864	7,264	8,096
Deferred Comp-employer	1,075	1,442	1,436	1,435	1,595
Uniforms - Boots	43	48	67	70	72
Payroll Processing Fees	153	160	183	119	175
Other Personnel Costs	28	30	28	28	28
	<u>\$ 46,635</u>	<u>\$ 58,125</u>	<u>\$ 56,441</u>	<u>\$ 55,808</u>	<u>\$ 61,805</u>
<b>Supplies and Services</b>					
Advertising	\$ 9	\$ 19	\$ 1	\$ 63	\$ 63
Equipment Rental/Lease	-	-	(35)	-	-
Dues & Memberships	46	10	34	-	-
Fees - Permits	3	-	-	-	-
Fuel	1,820	1,450	1,104	2,094	1,159
Insurance - Liability	622	666	818	815	872
Insurance - Auto	39	39	37	55	55
Insurance - Property	1,731	1,884	1,976	1,974	2,270
Licenses	1,571	992	1,906	1,907	2,003
Postage/Shipping	-	-	23	73	90
Preemployment Screening	19	5	21	21	21
Printing	23	14	30	27	27
Rent	20	21	16	16	16
Repair Parts Expense	3,429	2,782	5,027	2,997	3,087
Seminars/Education	117	89	277	224	327
Services - Engineering	-	-	7,000	7,000	-
Services - Sediment Disposal	450	-	518	515	515
Services - Alarm	-	-	168	169	169
Services - Grit & Screenings	690	-	3,899	3,900	3,900
Services - Maintenance	3,325	3,834	19,798	19,800	25,000
Services - IT/GIS Support	1,209	1,198	1,204	1,204	1,241
Services - Medical	46	27	94	91	91
Services - Professional	280	-	-	-	-
Services - Temp	128	-	-	-	-
Services - Other	1	-	-	-	-
Services - Uniforms	131	174	202	151	202
Subscriptions	-	2	14	16	16
Subsistence - Meals	33	5	101	99	131
Subsistence - Travel/Rm & Bd	127	15	230	219	220
Supplies - Chem	-	700	-	-	-
Supplies - IT Equipment	-	162	328	330	330
Supplies - Janitorial	-	-	(7)	-	-
Supplies - Office	297	210	206	206	206
Supplies - Safety	99	69	329	327	327
Supplies - Shop & Field	431	828	644	641	641
Training	207	482	231	228	228
Training - Safety	49	406	144	146	146
Minor Equip - Shop & Field	-	-	203	203	203
Utilities - Internet	165	362	384	356	384
Utilities - Telephone	632	1,059	649	541	590
Utilities - Trash	82	84	85	82	86
Utilities - Solar Power	(31)	-	-	-	-
Vehicle Maintenance	240	2,115	383	382	401
	<u>\$ 18,040</u>	<u>\$ 19,703</u>	<u>\$ 48,045</u>	<u>\$ 46,872</u>	<u>\$ 45,017</u>
Contingency	\$ -	\$ -	\$ -	\$ 2,100	\$ 2,100
Total Operating Expense	<u>\$ 64,675</u>	<u>\$ 77,829</u>	<u>\$ 104,486</u>	<u>\$ 104,780</u>	<u>\$ 108,922</u>



## 22ND DISTRICT AGRICULTURAL ASSOCIATION (DEL MAR FAIRGROUNDS)

### PROGRAM DESCRIPTION

This program was developed to support the Del Mar Fairgrounds with their infield stormwater and urban runoff treatment system. SEJPA staff conduct weekly treatment system and pump station reviews, after-hours alarm monitoring and emergency response, equipment preventative maintenance, PLC programming, instrumentation calibration, and rotating drum filter maintenance. Any additional services requested by the Fairgrounds Staff are captured in this program. Costs incurred through this program are borne solely by the Del Mar Fairgrounds.

### FY 2025-26 ESTIMATED ACTUAL EXPENSE

This program is expected to end the year under budget by \$10,100 or 5.3%, following the application of contingency funds. Personnel costs are anticipated to be slightly over budget, with Supplies and Services ending the year on budget. The higher personnel and supplies/services costs are driven by additional repair parts and labor costs. These additional services requested by the Del Mar Fairgrounds were offset by funding received from the Association.

### FY 2026-27 ADOPTED BUDGET

The adopted FY 2025–26 budget is \$190,596, a decrease of \$1,424 or 0.7% from the prior year. This reflects a \$7,068 or 4.6% increase in personnel costs due to wage inflation and increased level of effort, along with a \$3,508 or 13.2% increase in Supplies and Services for repair parts and related costs. Contingency funds have been reallocated across operating categories, as any unforeseen needs will be addressed through the Additional Services agreement with the Fairgrounds and billed separately. SEJPA is also in discussions with the Del Mar Fairgrounds regarding a potential Arc Flash study, estimated at \$18,000, which is not included in this budget and would be handled through the Additional Services agreement if authorized.

### *Del Mar Fairgrounds Expense Summary*

<b>Expense</b>	<b>Actual 2023-24</b>	<b>Actual 2024-25</b>	<b>Estimated Actual 2025-26</b>	<b>Adopted Budget 2025-26</b>	<b>Recommended Budget 2026-27</b>
Personnel	\$ 138,949	\$ 153,561	\$ 155,028	\$ 153,356	\$ 160,424
Supplies and Services	29,407	23,288	26,892	26,664	30,172
Contingency	-	-	-	12,000	-
<b>Total Operating Expense</b>	<b>\$ 168,356</b>	<b>\$ 176,849</b>	<b>\$ 181,920</b>	<b>\$ 192,020</b>	<b>\$ 190,596</b>

## Del Mar Fairgrounds Operating Expense Detail

Operating Expense	Actual 2023-24	Actual 2024-25	Estimated Actual 2025-26	Adopted Budget 2025-26	Recommended Budget 2026-27
<b>Personnel</b>					
Direct Salaries and Wages	\$ 103,898	\$ 107,934	\$ 104,601	\$ 104,080	\$ 107,977
Medicare Tax	1,392	1,532	1,549	1,547	1,589
State Unemployment Tax	117	139	103	105	101
Standby Pay	954	1,056	1,013	1,011	1,161
Overtime Pay	835	1,088	1,462	1,462	1,617
Dental/Vision	873	1,111	1,261	1,153	1,276
Employee Assistance Program	-	60	49	49	49
Life Insurance/Disability	670	861	1,093	938	1,033
Workers Comp. Insurance	-	1,445	1,902	1,319	1,848
Medical Insurance - Pers	11,585	15,286	15,538	16,642	17,606
Retirement Plan - CalPERS & PARS Trust	14,878	18,919	21,647	20,407	21,406
Deferred Comp-employer	3,258	3,551	4,030	4,032	4,216
Uniforms - Boots	96	79	195	198	191
Payroll Processing Fees	400	427	506	335	461
Other Personnel Costs	(8)	72	81	78	73
	\$ 138,949	\$ 153,561	\$ 155,028	\$ 153,356	\$ 160,424
<b>Supplies and Services</b>					
Fuel	\$ 2,608	\$ 2,045	\$ 2,269	\$ 2,344	\$ 2,723
Insurance - Liability	-	-	1,011	1,011	1,082
Insurance - Auto	-	-	46	69	69
Insurance - Property	-	-	2,448	2,448	2,816
Licenses	(4)	-	2,366	2,366	2,484
Postage/Shipping	-	-	25	90	111
Preemployment Screening	49	3	25	26	26
Printing	33	-	33	34	34
Seminars/Education	-	-	348	277	406
Services - Alarm	2	-	210	210	210
Services - Laboratory	2,320	5,408	4,197	4,200	4,410
Services - Maintenance	-	-	198	200	100
Services - Medical	124	32	112	113	113
Services - IT/GIS Support	6,404	4,284	1,493	1,493	1,540
Services - Professional	-	-	-	-	-
Services - Uniforms	-	6	-	187	251
Subscriptions	-	-	21	20	20
Subsistence - Meals	-	-	125	122	162
Subsistence - Travel/Rm & Bd	-	-	287	272	272
Supplies - Chemicals	366	-	-	-	-
Supplies - IT Equipment	-	-	410	409	409
Supplies - Office	1	-	255	255	255
Supplies - Safety	-	-	406	405	405
Supplies - Shop & Field	-	-	798	795	795
Repair Parts Expense	17,502	10,759	6,723	5,997	7,802
Training	-	-	280	282	282
Training - Safety	-	-	182	181	181
Minor Equip - Shop & Field	-	752	1,169	1,169	1,403
Utilities - Internet	-	-	478	442	476
Utilities - Telephone	-	-	394	671	731
Utilities - Trash	-	-	107	102	107
Vehicle Maintenance	-	-	477	474	497
	\$ 29,407	\$ 23,288	\$ 26,892	\$ 26,664	\$ 30,172
Contingency	\$ -	\$ -	\$ -	\$ 12,000	\$ -
<b>Total Operating Expense</b>	\$ 168,356	\$ 176,849	\$ 181,920	\$ 192,020	\$ 190,596



## *LEUCADIA WASTEWATER DISTRICT (LWD) TECHNICAL SUPPORT SERVICES*

### PROGRAM DESCRIPTION

This program supports the Leucadia Wastewater District (LWD) with technical support and operation services for the Forest R. Gafner Water Reclamation Facility (Gafner Facility). Costs incurred through this program are borne solely by LWD.

### FY 2025-26 ESTIMATED ACTUAL EXPENSE

This program is expected to be on budget for FY 2025-26 in accordance with SEJPA and LWD’s agreement.

### FY 2026-27 ADOPTED BUDGET

The recommended budget for FY 2026-27 is \$33,335, where 88.5% of the operating expenses come from personnel and the remaining 11.5% is allocated for permits, software, and other miscellaneous expenses.

### *Leucadia WD Technical Support Services Expense Summary*

<b>Expense</b>	<b>Actual 2023-24</b>	<b>Actual 2024-25</b>	<b>Estimated Actual 2025-26</b>	<b>Adopted Budget 2025-26</b>	<b>Recommended Budget 2026-27</b>
Personnel	\$ 30,000	\$ 26,925	\$ 25,768	\$ 25,728	\$ 29,509
Supplies and Services	600	675	3,556	3,596	3,826
Total Operating Expense	<u>\$ 30,600</u>	<u>\$ 27,600</u>	<u>\$ 29,324</u>	<u>\$ 29,324</u>	<u>\$ 33,335</u>

*Leucadia WD Technical Support Services Operating Expense Detail*

<b>Operating Expense</b>	<b>Actual 2023-24</b>	<b>Actual 2024-25</b>	<b>Estimated Actual 2025-26</b>	<b>Adopted Budget 2025-26</b>	<b>Recommended Budget 2026-27</b>
<b>Personnel</b>					
Direct Salaries and Wages	\$ 27,675	\$ 19,670	\$ 17,251	\$ 17,326	\$ 19,777
Medicare Tax	322	307	241	242	257
State Unemployment Tax	15	15	16	16	16
Standby Pay	159	176	728	725	973
Overtime Pay	1,029	164	277	364	695
Dental/Vision	-	175	192	180	206
Employee Assistance Program	-	8	7	8	8
Life Insurance/Disability	-	132	168	147	167
Workers Comp. Insurance	-	239	331	206	299
Medical Insurance - Pers	-	2,239	2,148	2,600	2,848
Retirement Plan - CalPERS & PARS Trust	-	3,070	3,651	3,189	3,463
Deferred Comp-employer	800	628	632	630	682
Uniforms - Boots	-	32	29	31	31
Payroll Processing Fees	-	57	88	52	75
Other Personnel Costs	-	13	10	12	12
	<u>\$ 30,000</u>	<u>\$ 26,925</u>	<u>\$ 25,768</u>	<u>\$ 25,728</u>	<u>\$ 29,509</u>
<b>Supplies and Services</b>					
Dues & Memberships	\$ -	\$ -	\$ -	\$ -	\$ -
Fees - Permits	600	675	497	500	500
Insurance - Liability	-	-	237	238	255
Insurance - Auto	-	-	11	16	16
Insurance - Property	-	-	579	576	663
Licenses	-	-	557	557	584
Postage/Shipping	-	-	10	21	26
Preemployment Screening	-	-	4	6	6
Printing	-	-	10	8	8
Seminars/Education	-	-	83	65	95
Services - Alarm	-	-	49	49	49
Services - IT/GIS Support	-	-	350	351	362
Services - Maintenance	-	-	101	100	100
Services - Medical	-	-	26	27	27
Services - Uniforms	-	-	59	44	59
Subscriptions	-	-	-	2	2
Subsistence - Meals	-	-	31	29	38
Subsistence - Travel/Rm & Bd	-	-	67	64	64
Supplies - IT Equipment	-	-	98	96	96
Supplies - Office	-	-	59	60	60
Supplies - Safety	-	-	92	95	95
Supplies - Shop & Field	-	-	189	187	187
Training	-	-	63	66	66
Training - Safety	-	-	45	42	42
Utilities - Internet	-	-	110	104	112
Utilities - Telephone	-	-	94	158	172
Utilities - Trash	-	-	24	24	25
Vehicle Maintenance	-	-	110	111	117
Total Operating Expense	<u>\$ 30,600</u>	<u>\$ 27,600</u>	<u>\$ 29,324</u>	<u>\$ 29,324</u>	<u>\$ 33,335</u>



## **RECYCLED WATER**

### **PROGRAM DESCRIPTION**

SEJPA owns and operates a recycled water utility which wholesales recycled water to Santa Fe Irrigation District (SFID), San Dieguito Water District (SDWD), City of Del Mar, and Olivenhain Municipal Water District (OMWD), and includes direct sale agreements with Encinitas Ranch Golf Authority (ERGA) and the Del Mar Fairgrounds. SEJPA financed, permitted, and constructed the recycled water utility, which became operational in September 2000. Since the addition of the Advanced Water Purification (AWP) system in 2013, SEJPA's Recycled Water program has the capacity to deliver up to 3 million gallons per day. Local customers that use the recycled water for landscape irrigation include the Encinitas Ranch Golf Course, Lomas Santa Fe Executive and Country Club Golf Courses, Magdalena Ecke Family YMCA, Del Mar Fairgrounds, Village Park greenbelt, local schools, parks, businesses, and street/freeway landscape. Industrial use customers include Scripps Hospital, the Del Mar Fairgrounds, and the San Elijo Water Campus. FY 2026-27 begins the 26th year of operation for the Recycled Water program.

### **FY 2025-26 ESTIMATED ACTUAL EXPENSE**

Recycled Water program's estimated operating expenditures are projected to be under budget by \$68,448 or 2.5%, including unused budgeted contingency funds of \$50,000. Personnel costs are forecast to be over budget by \$13,070 or 1.2% due to greater than expected level of effort related to unanticipated repairs to the recycled water system in FY 2025-26. Supplies and Services are trending under budget by \$31,518 or 2.0% despite a \$40,000 unbudgeted repair cost associated with a leak in an onsite recycled water pipeline. Program savings were realized through lower than planned professional and engineering costs.

### **FY 2026-27 ADOPTED BUDGET**

For FY 2026-27, the adopted budget is \$5,109,593 including a \$2,806,295 operating budget, \$1,320,000 in capital appropriations, and \$983,298 in required debt service costs. The Recycled Water operating budget increased by \$82,235 or 3.0%. Personnel costs have increased by \$67,506 or 6.1% due to labor-related cost inflation and projected work demands. Supplies and Services are estimated to increase by \$14,729 or 0.9% primarily due to savings on professional services including lobbying costs, consultants, and chemical costs. These savings are anticipated to be partially offset by increases in utility costs, repair part expenses, and engineering services. Contingency funding has been set at \$50,000, consistent with last year's funding level.

## Recycled Water Expense Summary

Expense	Actual 2023-24	Actual 2024-25	Estimated Actual 2025-26	Adopted Budget 2025-26	Recommended Budget 2026-27
Personnel	\$ 914,980	\$ 1,075,660	\$ 1,121,938	\$ 1,108,868	\$ 1,176,374
Supplies and Services	1,438,524	1,518,727	1,533,673	1,565,192	1,579,921
Capital Outlay	79,814	-	-	-	-
Contingency	-	-	-	50,000	50,000
Total Operating Expense	\$ 2,433,318	\$ 2,594,387	\$ 2,655,611	\$ 2,724,060	\$ 2,806,295
Debt Service					
2023 Recycled Water Loan	\$ 778,982	\$ 778,497	\$ 779,039	\$ 779,039	\$ 778,895
Advanced Water Purification	148,153	148,154	148,154	148,154	148,153
SFID Pipeline Loan	31,134	46,980	46,500	46,500	45,900
Solana Beach Pipeline Loan	58,000	8,010	10,350	10,350	10,350
Total Debt Service	\$ 1,016,269	\$ 981,641	\$ 984,043	\$ 984,043	\$ 983,298
Total Operating Expenses Including Debt Service	\$ 3,449,588	\$ 3,576,028	\$ 3,639,654	\$ 3,708,103	\$ 3,789,593
Capital Appropriations	2,375,000	1,728,000	1,456,000	1,456,000	1,320,000
Total Operating and Capital Appropriations	\$ 5,824,588	\$ 5,304,028	\$ 5,095,654	\$ 5,164,103	\$ 5,109,593



### EVERY DROP COUNTS

To help keep our communities green, SEJPA provides recycled water to schools, parks, businesses, homeowners associations, and golf courses for irrigation. This conserves local water supplies and limits our dependencies on imported water.

## Recycled Water Net Revenue

Net Revenue over (under) Expense	Actual 2023-24	Actual 2024-25	Estimated Actual 2025-26	Adopted Budget 2025-26	Recommended Budget 2026-27
Operating Revenue	\$ 3,198,229	\$ 3,795,539	\$ 3,377,721	\$ 3,399,250	\$ 3,553,532
Interest on Water Reclamation	202,779	561,885	435,510	522,790	302,662
Operating Expense	(2,433,318)	(2,594,387)	(2,655,611)	(2,724,060)	(2,806,295)
Debt Service	(964,069)	(981,641)	(984,043)	(984,043)	(983,298)
Net Recycled Water Revenue	\$ 3,621	\$ 781,396	\$ 173,577	\$ 213,938	\$ 66,601

## Recycled Water Operating Expense Detail

Operating Expense	Actual 2023-24	Actual 2024-25	Estimated Actual 2025-26	Adopted Budget 2025-26	Recommended Budget 2026-27
<b>Personnel</b>					
Direct Salaries and Wages	\$ 631,091	\$ 731,215	\$ 749,931	\$ 756,764	\$ 793,249
Medicare Tax	9,250	10,435	11,003	11,002	11,533
State Unemployment Tax	889	1,048	742	745	734
Standby Pay	10,264	8,107	6,742	6,739	7,737
Overtime Pay	10,018	11,034	17,462	12,483	13,548
Dental/Vision	7,044	8,345	9,227	8,203	9,263
Employee Assistance Program	172	453	350	348	353
Life Insurance/Disability	5,036	6,421	7,942	6,670	7,500
Workers Comp. Insurance	9,723	10,854	14,400	9,380	13,414
Medical Insurance - Pers	87,018	114,816	113,182	118,366	127,796
Retirement Plan - CalPERS & PARS Trust	118,376	143,107	156,647	145,142	155,380
Deferred Comp-employer	21,743	25,164	28,684	28,680	30,601
Uniforms - Boots	819	831	1,407	1,408	1,388
Payroll Processing Fees	3,087	3,243	3,665	2,382	3,349
Other Personnel Costs	450	586	556	556	529
	<u>\$ 914,980</u>	<u>\$ 1,075,660</u>	<u>\$ 1,121,938</u>	<u>\$ 1,108,868</u>	<u>\$ 1,176,374</u>



### BEAUTIFYING COMMUNITIES

SEJPA's recycled water brings landscapes to life throughout Encinitas, Solana Beach, and Del Mar. The Coastal Rail Trail, irrigated with recycled water, wanders through colorful displays of drought-tolerant plants.

Expense detail continued on next page.

Recycled Water Operating Expense Detail (Continued)

<b>Operating Expense</b>	<b>Actual 2023-24</b>	<b>Actual 2024-25</b>	<b>Estimated Actual 2025-26</b>	<b>Adopted Budget 2025-26</b>	<b>Recommended Budget 2026-27</b>
<b>Supplies and Services</b>					
Board Expense	\$ 75	\$ 468	\$ 2,202	\$ 2,200	\$ 2,200
Advertising	1,056	349	47	727	727
Bank Service Charges	125	1,408	-	-	-
Dues & Memberships	13,265	9,641	11,333	11,330	11,673
Equipment Rental/Lease	1,384	1,435	3,601	3,600	3,600
Fees - Permits	30,790	34,423	34,648	34,650	34,650
Fuel	4,474	4,761	8,447	4,559	8,869
Insurance - Liability	7,902	8,467	10,362	10,364	11,089
Insurance - Auto	490	494	471	704	704
Insurance - Property	22,004	23,956	25,094	25,093	28,864
Licenses	24,302	27,144	24,249	24,249	25,463
Minor Equip - Shop & Field	3,496	2,231	4,858	1,366	1,366
Postage/Shipping	624	527	444	922	1,142
Preemployment Screening	378	70	261	262	262
Printing	388	181	344	347	347
Rent	93,224	134,279	115,873	115,875	119,250
Repair Parts Expense	83,119	98,686	119,330	79,204	98,686
Seminars/Education	1,841	1,140	4,800	2,842	4,158
Services - Accounting	22,981	9,855	16,099	16,097	23,209
Services - Landscape	27,218	30,270	24,003	24,002	24,003
Services - Alarm	2,195	2,130	2,270	2,153	2,152
Services - Engineering	47,630	24,437	47,503	92,500	111,000
Services - Janitorial	16,664	15,364	15,838	15,840	16,315
Services - Fire Control	-	-	1,001	1,000	1,000
Services - Laboratory	6,006	7,527	7,501	7,500	7,725
Services - Legal	24,213	18,948	23,694	23,691	23,691
Services - Lobbying	14,625	26,000	-	24,000	-
Services - Maintenance	59,592	47,684	57,403	57,400	64,200
Services - Medical	933	432	1,153	1,155	1,158
Services - Other	25,037	24	301	300	300
Services - Professional	64,839	54,385	92,600	93,000	76,220
Services - IT/GIS Support	15,375	15,231	15,309	15,308	15,782
Services - Contractors	27,090	62,693	39,199	24,200	24,200
Services - Temp	43,633	32,694	23,288	21,952	32,170
Services - Uniforms	1,629	2,226	2,544	1,914	2,572
Subscriptions	58	114	210	209	209
Subsistence - Meals	1,664	2,626	2,244	1,253	1,662
Subsistence - Travel/Rm & Bd	2,535	1,217	3,036	2,791	2,791
Supplies - Chem - Odor	9,402	-	-	-	-
Supplies - Chem - Polymer	2,052	4,035	5,166	5,168	4,104
Supplies - Chem - Sodium Hypo	140,194	177,000	186,754	187,388	155,267
Supplies - Chemicals	93,822	73,668	68,100	68,699	59,372
Supplies - IT Equipment	-	2,061	4,188	4,191	4,191
Supplies - Janitorial	1,317	1,064	1,144	1,500	1,500
Supplies - Lab	12,526	11,539	13,394	13,391	13,394
Supplies - Office	4,466	4,178	6,238	2,614	2,614
Supplies - Safety	2,291	1,390	4,156	4,154	4,154
Supplies - Shop & Field	4,996	872	8,144	8,145	8,148
Training	2,633	2,679	2,891	2,893	2,893
Training - Safety	1,109	628	1,854	1,851	1,851
Utilities - Gas & Electric	370,068	421,553	398,073	428,480	445,619
Utilities - Internet	2,097	4,602	4,882	4,532	4,876
Utilities - Telephone	5,262	6,893	6,335	6,882	7,496
Utilities - Water	11,252	30,436	12,480	12,480	12,480
Utilities - Water (Suppl.)	29,442	19,186	22,361	22,360	22,360
Utilities - Trash	1,044	1,747	1,091	1,047	1,094
Utilities - Solar Power	35,668	49,423	40,003	40,000	40,000
Vehicle Maintenance	1,070	2,256	4,861	4,857	5,099
	<u>\$ 1,438,524</u>	<u>\$ 1,518,727</u>	<u>\$ 1,533,673</u>	<u>\$ 1,565,192</u>	<u>\$ 1,579,921</u>
Capital Outlay	\$ 79,814	\$ -	\$ -	\$ -	\$ -
Contingency	-	-	-	50,000	50,000
<b>Total Operating Expense</b>	<u>\$ 2,433,318</u>	<u>\$ 2,594,387</u>	<u>\$ 2,655,611</u>	<u>\$ 2,724,060</u>	<u>\$ 2,806,295</u>

Environmental Stewardship

Strong Permit Compliance

Community Investments

Safety and Reliability

Sustainable Resource Management

## CAPITAL PROGRAMS

### CAPITAL IMPROVEMENT PROGRAM OVERVIEW

SEJPA is responsible for maintaining permit compliance with regulatory agencies and legal agreements with customers to provide wastewater, recycled water, and clean water services. SEJPA's Capital Improvement Program (CIP) prioritizes environmental protection, fiscal responsibility, and community benefits including the safety of our staff and the public when developing and prioritizing agency infrastructure needs. We strive to replace aging assets prior to failure or significant declines in service performance and invest in energy efficiency and sustainable practices. Proactive asset management and capital improvement planning guide our capital program implementation.

SEJPA is nearing completion on the 2023-25 Capital Plan consisting of five prioritized projects represented in the table below. Four of the projects (indicated with asterisks) have been completed. The Wanket Tank Refurbishment Project experienced unexpected tank leaks, delaying completion and requiring approximately \$1 million in additional funding, as approved by SEJPA's Board for FY 2025–26. The project is now expected to be completed by June 2026. These projects, including the additional \$1 million for the Wanket Tank leak repairs, are fully funded from prior year appropriations, and as a result, no new funds are being requested for these projects in FY 2026-27.

#### 2023-25 Capital Plan

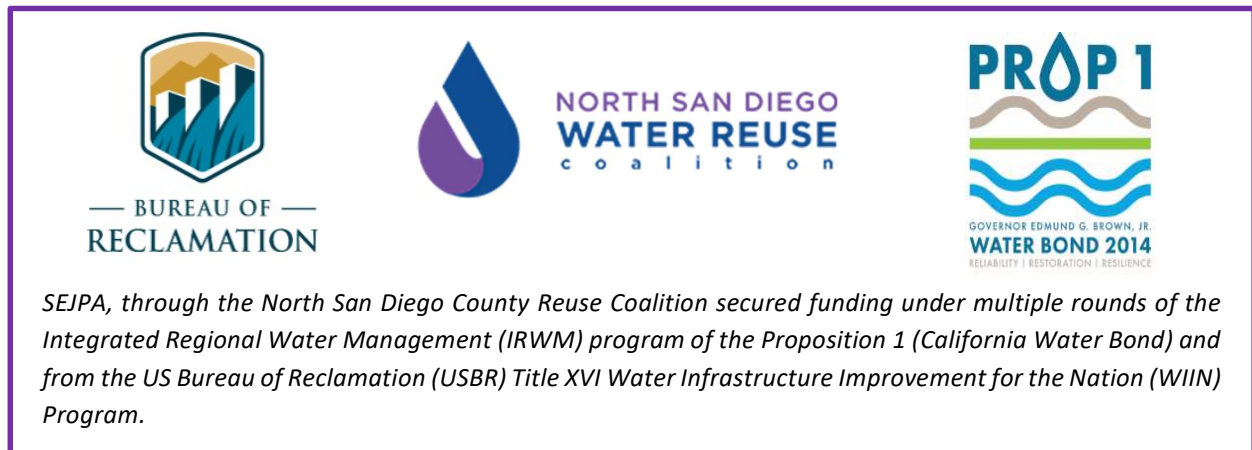
2023-2025 Capital Plan	Budget		Program	Status (Completion Date)
<b>Phase 3 Project</b>	\$ 12.2	million		
* Biosolids Dewatering and MS-2 Replacement	\$ 12.2	million	WW	Complete (October 2025)
<b>Phase 4 Projects</b>	\$ 9.8	million		
Wanket Tank Refurbishment	\$ 4.2	million	RW	In Progress (June 2026)
* Wanket Recycled Water Pipeline	\$ 1.6	million	RW	Complete (February 2025)
* Moonlight Beach PS Modifications	\$ 2.3	million	ESD	Complete (March 2025)
* Stormwater Capture & Reuse	\$ 1.7	million	RW/WW	Complete (September 2025)
<b>TOTAL 2023-2025 Capital Plan</b>	<b>\$ 22.0</b>	<b>million</b>		

\* Project Completed in FY25-26

### CAPITAL PROGRAM FUNDING SUMMARY

The Capital Program is funded through a combination of sources with costs allocated to programs based on infrastructure benefits and in accordance with the capacity share owned/leased by contributing agencies. Funding sources include:

- Annual capital contributions from customer agencies for shared facilities, proportional to agency ownership or lessee responsibility (i.e., Wastewater Program, Ocean Outfall Program, Laboratory Program);
- Annual capital contributions by specific customer agencies for special projects undertaken by SEJPA (i.e., Pump Station upgrades);
- Recycled Water Revenues (recycled water sales and incentive programs) that contribute to the recycled water reserve fund, a portion of which is designated for recycled water capital improvements;
- Financing strategies including bond measures and private loans; and
- Grants from State of California and the United States Federal Government.



For ongoing projects, SEJPA has been awarded multiple state and federal grants totaling up to \$3.6 million to fund the Preliminary Treatment Project (a.k.a. Headworks Improvements), Stormwater Capture & Reuse, and the Wanket Reservoir Refurbishment and Pipeline. This past year, SEJPA also received approval from USBR to request available grant funding under the Title XVI WIIN program for recycled water conservation and production benefits provided by the recently completed Biosolids Dewatering Project. The deferred Biological Treatment Improvements project and other recycled water projects remain eligible for future rounds of grant funding.

## CAPITAL PROGRAM PLANNING

SEJPA is nearing completion of an update to its Facility Plan, which will establish the technical basis for capital program priorities through 2035 at the San Elijo Water Campus and remote facilities. The Facility Plan has evaluated system-wide infrastructure needs with emphasis on:

- **Asset Renewal:** Rehabilitation and replacement of aging mechanical, electrical, and structural systems, along with deployment of advanced SCADA, automation, and control technologies to enhance process performance, energy efficiency, and system reliability.
- **Mission-Critical Facilities:** Modernization of laboratory and maintenance facilities to strengthen operational readiness, regulatory compliance, and workforce effectiveness. Improvements include consolidated warehousing, improved inventory control, modern tools, and ergonomic workspaces.
- **Resiliency and Sustainability:** Hardening of facilities against wildfire and severe weather, expansion of renewable energy (solar and biogas), and upgrades to treatment and recycled water systems to improve reliability, maximize resource recovery, and reduce environmental impact.
- **Regulatory Compliance:** Infrastructure and process upgrades necessary to maintain compliance with evolving water, air, and biosolids regulations.

Near-term Water Campus needs, through FYE 2028, have been confirmed through the Facility Plan development and are described in the following sections. Project needs beyond FYE 2028 will be funded through future capital budget appropriations.

### CAPITAL PROGRAM PROJECT APPROPRIATION SUMMARY

The Capital Program is organized by SEJPA service programs, as expenses are incurred through those programs and the respective member and customer agencies fund the capital projects. Details of the capital projects are presented in the following subsections. Where a project benefits multiple programs, costs are allocated based on relative benefit. Within a program, capital costs are shared proportionally based on capacity ownership or leased capacity. Below is a table listing the appropriations for FY 2026-27.

Program	Fiscal Year 2023-24	Fiscal Year 2024-25	Estimated Actual 2025-26	Adopted Budget 2025-26	Recommended Budget 2026-27
Wastewater Treatment	\$ 1,225,000	\$ 1,265,000	\$ 2,110,368	\$ 2,110,368	\$ 2,696,412
Laboratory Services	120,000	147,000	125,000	125,000	125,000
Ocean Outfall	100,000	146,000	150,000	150,000	150,000
Cardiff Sanitary Division Pump Stations	75,000	125,000	55,000	55,000	100,000
Encinitas Sanitary Division Pump Station	600,000	204,000	45,000	45,000	-
City of Solana Beach Pump Stations	-	26,000	-	-	50,000
City of Del Mar Pump Station	-	25,000	-	-	-
Recycled Water	2,375,000	1,728,000	1,456,000	1,456,000	1,320,000
Total Capital Appropriations	<u>\$ 4,495,000</u>	<u>\$ 3,666,000</u>	<u>\$ 3,941,368</u>	<u>\$ 3,941,368</u>	<u>\$ 4,441,412</u>

### NEAR-TERM CAPITAL NEEDS FOR WASTEWATER PROGRAM

Through the Facility Plan development process, SEJPA identified near-term capital needs totaling approximately \$8.25 million and established a capital funding projection for Fiscal Years Ending 2026 through 2028 to meet these needs. The following table describes the identified wastewater infrastructure needs and presents budgetary estimates of the near-term wastewater capital needs at the San Elijo Water Campus.

#### Wastewater Capital Infrastructure Needs

Project Need by Plant Area Through FYE 28	Est. Cost
<b>Headworks:</b> Safety Improvements on concrete channels; grit and screening building improvements; replace two grit classifiers	\$ 555,000
<b>Primary Sedimentation &amp; Flow Equalization:</b> Primary Sedimentation basin concrete tank and equipment refurbishment; mechanical/piping rehab at flow equalization pump station	1,010,000
<b>Aeration Basin and Effluent Pump Station:</b> Effluent pump station rehabilitation; replacement of RAS pumps; Blower Building rehabilitation*	1,776,970
<b>Secondary Sedimentation:</b> Clarifier launder replacement; electrical system replacement	1,260,000
<b>Sludge Digestion:</b> Replacement of heating system; Digester No. 2 concrete and floating cover rehabilitation	2,780,000
<b>Odor Control Facilities:</b> ORF 1 recirculation pump replacement	60,000
<b>Campus Wide:</b> SCADA 3.0 (Total project est'd \$1.6 million; wastewater cost allocation)	805,000
<b>TOTAL</b>	<b>\$ 8,246,970</b>

\*The estimated cost for the Aeration Basin and Effluent Pump Station work included above only represents the anticipated funding available through FYE 2028. Additional funds may be needed beginning in FYE 2029 for project completion

In discussions with wastewater-member agencies, projects to address these capital needs will be funded on a PayGo basis using wastewater capital cash contributions over the next three years. Wastewater capital contributions are shared by the wastewater member agencies and lessee(s), in accordance with owned or leased capacity, respectively: City of Encinitas’ Cardiff Sanitary Division (JPA Member, 41.9%), Solana Beach Sanitary Division (JPA Member, 41.9%), City of Del Mar (Lessee, 11.4%), and Rancho Santa Fe Community Services District (Lessee, 4.8%). The following table presents the projected wastewater capital funding by member agency and lessee over the next three fiscal years.

**Wastewater Capital Program funding by Owner & Lessee**

<b>Fiscal Year Ending*</b>	<b>Encinitas 41.9%</b>	<b>Solana Beach 41.9%</b>	<b>Del Mar 11.4%</b>	<b>Rancho Santa Fe CSD 4.8%</b>	<b>Total 100.0%</b>
<b>FYE 2026</b>	\$ 884,414	\$ 884,414	\$ 241,088	\$ 100,452	\$ 2,110,368
<b>FYE 2027</b>	1,129,925	1,129,925	308,161	128,401	2,696,412
<b>FYE 2028</b>	1,441,603	1,441,603	393,165	163,819	3,440,190
<b>Total</b>	<b>\$ 3,455,942</b>	<b>\$ 3,455,942</b>	<b>\$ 942,414</b>	<b>\$ 392,672</b>	<b>\$ 8,246,970</b>

\* This Budget adopts capital contributions for FYE 27 only, FYE28 are projections based on known capital program needs, subject to revision in subsequent budget years as necessary to meet capital program costs under a Pay-Go methodology.

*LABORATORY SERVICES PROJECT APPROPRIATION DETAIL*

<b>Capital Project</b>	<b>Fiscal Year 2023-24</b>	<b>Fiscal Year 2024-25</b>	<b>Estimated Actual 2025-26</b>	<b>Adopted Budget 2025-26</b>	<b>Recommended Budget 2026-27</b>
Laboratory Remodel	\$ 120,000	\$ 125,000	\$ 125,000	\$ 125,000	\$ 125,000
Facility Plan Update	-	22,000	-	-	-
Total Capital Appropriations	<u>\$ 120,000</u>	<u>\$ 147,000</u>	<u>\$ 125,000</u>	<u>\$ 125,000</u>	<u>\$ 125,000</u>

The current laboratory casework has been in use for more than 30 years and is exhibiting signs of corrosion and deterioration. Although the building code has no significant requirements on corroding surfaces, the laboratory casework, counters, furniture, and ventilation equipment have been recommended for replacement due to age and increased maintenance requirements. In preparation for a laboratory remodeling project, in FY 2022-23 SEJPA began collecting capital appropriation contributions for a forthcoming laboratory refurbishment project. From FY 2022-23 through FY 2025-26, SEJPA has cumulatively collected installments totaling \$490,000 to date. For FY 2026-27, SEJPA is budgeting for a fifth installment of \$125,000. This past year, SEJPA retained an architect to perform a condition assessment, assess workspace and ergonomic needs, and to develop a scope and budget for the Project; recommendations will be incorporated into the 2025 Facility Plan.

*OCEAN OUTFALL PROJECT APPROPRIATION DETAIL*

<b>Capital Project</b>	<b>Fiscal Year 2023-24</b>	<b>Fiscal Year 2024-25</b>	<b>Estimated Actual 2025-26</b>	<b>Adopted Budget 2025-26</b>	<b>Recommended Budget 2026-27</b>
Outfall Reserve	\$ 50,000	\$ 50,000	\$ 50,000	\$ 50,000	\$ 50,000
Escondido Vault Rehabilitation	50,000	50,000	100,000	100,000	100,000
Facility Plan Update	-	46,000	-	-	-
Total Capital Appropriations	<u>\$ 100,000</u>	<u>\$ 146,000</u>	<u>\$ 150,000</u>	<u>\$ 150,000</u>	<u>\$ 150,000</u>

## OUTFALL RESERVE

The San Elijo Ocean Outfall system is critical regional infrastructure that serves SEJPA and the City of Escondido. This infrastructure includes pressure regulating and isolation valves, ocean discharge pumps, flow measuring meters, 2,600 feet of land outfall pipeline, 8,000 feet of ocean outfall pipe, system automation and monitoring components, and support structures and rock ballast that hold the outfall stationary on the ocean floor. The outfall conveys an average of approximately 10 million gallons per day (MGD) with peak flows during storm events of up to 25.5 MGD. The Outfall Reserve is a capital reserve account dedicated for repair and replacement activities associated with the San Elijo Ocean Outfall system. Due to ocean currents and sand movement on the ocean floor, the rock ballast that protects the outfall can be expected to require periodic replenishment. Re-ballasting and was completed most recently in 2006 – a comparable scope is anticipated to cost in excess of \$4 million today (in 2026 dollars). SEJPA completed an inspection of the outfall in 2025 that found the ballast rock was adequately supporting the outfall; however, ballast rock can be affected by a single significant ocean swell. The Outfall Reserve balance totals approximately \$1.9 million. Collecting reserve funding over time builds up funds required to complete the work when it becomes necessary while smoothing the cost impact to rate payers.

## ESCONDIDO VAULT REHABILITATION PROJECT

As part of the Ocean Outfall system, SEJPA operates and maintains flow metering and water quality monitoring equipment inside a below-ground, concrete structure on Manchester Avenue near the Water Campus driveway. The vault was initially installed in 1974 and modified in 1999 to include a bypass pipe and secondary flow meter. The original valve vault, pipeline, valves and flow meter are nearing the end of their service life. SEJPA evaluated the condition of the vault and equipment through the 2025 Facility Plan with a recommended project to replace old and outdated equipment within the vault. SEJPA received \$350,000 in capital contributions for this project in prior fiscal years and is budgeting another annual installment of \$100,000 in FY 2026-27 to advance the engineering and prepare for project implementation.

## CARDIFF SANITARY DIVISION PUMP STATIONS APPROPRIATION DETAIL

<b>Capital Project</b>	<b>Fiscal Year 2023-24</b>	<b>Fiscal Year 2024-25</b>	<b>Estimated Actual 2025-26</b>	<b>Adopted Budget 2025-26</b>	<b>Recommended Budget 2026-27</b>
Olivenhain Pump Station Upgrade	\$ -	\$ -	\$ 55,000	\$ 55,000	\$ 100,000
Olivenhain Inlet Gate Replacement	75,000	100,000	-	-	-
Facility Plan Update	-	25,000	-	-	-
Total Capital Appropriations	<u>\$ 75,000</u>	<u>\$ 125,000</u>	<u>\$ 55,000</u>	<u>\$ 55,000</u>	<u>\$ 100,000</u>

The Cardiff Sanitary Division owns three pump stations: Olivenhain Pump Station, the Cardiff Pump Station, and Coast Pump Station. Capital infrastructure needs at these pump stations are being evaluated through the ongoing Facility Plan, with electrical upgrades at the Cardiff Pump Station and generator and electrical upgrades at the Olivenhain Pump Station emerging as high priorities. The City of Encinitas is developing plans for a phased refurbishment and upgrade to the Cardiff Pump Station. SEJPA previously collected \$230,000 for identified needs at the Olivenhain Pump Station. SEJPA will be advancing the design of the generator replacement project in FY 2026-27. The balance of funds for implementation of these projects will be collected in future budgets for project implementation.

## ENCINITAS SANITARY DIVISION PUMP STATION APPROPRIATION DETAIL

<b>Capital Project</b>	<b>Fiscal Year 2023-24</b>	<b>Fiscal Year 2024-25</b>	<b>Estimated Actual 2025-26</b>	<b>Adopted Budget 2025-26</b>	<b>Recommended Budget 2026-27</b>
Moonlight Beach Pump Station Rehabilitation	\$ 600,000	\$ 200,000	\$ 45,000	\$ 45,000	\$ -
Facility Plan Update	-	4,000	-	-	-
Total Capital Appropriations	<u>\$ 600,000</u>	<u>\$ 204,000</u>	<u>\$ 45,000</u>	<u>\$ 45,000</u>	<u>\$ -</u>

### MOONLIGHT BEACH PUMP STATION REHABILITATION

SEJPA recently led a major upgrade to the Moonlight Beach Pump Station. The \$2.3 million project was fully funded by the City of Encinitas through FY 2024–25 and was completed under budget in Spring 2025. Following completion of the upgrade, SEJPA conferred with the City of Encinitas, determining the best use of remaining capital funds would be to address follow-on asset management efforts. Identified asset management needs included the replacement of corroded ventilation system components that provide fresh air necessary to declassify the space in accordance with National Fire Protection Association (NFPA) Standard 820, refurbishment of generator enclosure panels that provide sound attenuation and equipment protection/security, and application of protective coatings to ancillary components exposed to aggressive wastewater and marine environment. The ventilation work was completed in FY 2025-26, and the generator and coating repair work is planned for FY 2026-27; no additional funding is budgeted at this time.



#### INVESTING IN ENVIRONMENTAL STEWARDSHIP

At SEJPA, we are unwavering in our commitment to environmental stewardship, recognizing the vital role we play in preserving the safety and splendor of our coastal environment. Our responsibility reaches beyond the present moment, extending to the future, as we strive to ensure that generations to come can continue to live, thrive, and enjoy the beauty of our surrounding communities through the investments we make today.

## CITY OF SOLANA BEACH PUMP STATIONS PROJECT APPROPRIATION DETAIL

<b>Capital Project</b>	<b>Fiscal Year 2023-24</b>	<b>Fiscal Year 2024-25</b>	<b>Estimated Actual 2025-26</b>	<b>Adopted Budget 2025-26</b>	<b>Recommended Budget 2026-27</b>
Eden Gardens Pump Station Generator Upgrade	\$ -	\$ -	\$ -	\$ -	\$ 50,000
Facility Plan Update	-	26,000	-	-	-
Total Capital Appropriations	<u>\$ -</u>	<u>\$ 26,000</u>	<u>\$ -</u>	<u>\$ -</u>	<u>\$ 50,000</u>

The FY 2026–27 Capital Budget includes \$50,000 for the planned rebuild of a standby pump and replacement of Pump #1 at the Eden Gardens Pump Station. Following installation, the removed pump will be rehabilitated in FY 2027–28 and retained as a ready spare, reducing operational risk and minimizing the need for costly temporary bypass pumping during maintenance or equipment failure.

## RECYCLED WATER PROJECT APPROPRIATION DETAIL

Working collaboratively with its water district partners, SEJPA plans and delivers recycled water infrastructure improvements to maintain service reliability, improve operational efficiency, and enhance system capabilities.

SEJPA's 2023–25 Capital Plan includes several major recycled water projects, with total appropriations of approximately \$8 million. Grant funding of approximately \$3.6 million has reduced program costs, and a \$10 million loan secured in March 2023 provides additional flexibility to manage cash flow. In September 2025, SEJPA completed a cost-of-service study and adopted a recycled water rate structure through calendar year 2029. The capital plan supported by this rate structure focuses primarily on asset management initiatives through 2028, estimated at \$3 million.

The following Treatment, Conveyance, and Storage projects are currently in progress and are anticipated to be completed by 2028.

### WANKET TANK REFURBISHMENT AND RECYCLED WATER PIPELINE

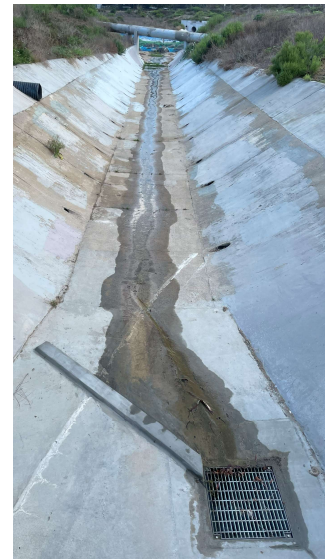
This project will convert the Wanket Tank, an existing 3-million-gallon pre-stressed concrete potable water tank that has been out of service for about a decade, into a recycled water storage tank. The Wanket Tank, constructed in 1975, was originally constructed and jointly owned by Olivenhain Municipal Water District (OMWD) and San Dieguito Water District (SDWD) and is no longer used for potable water service. SEJPA has since secured ownership rights to the tank from OMWD and SDWD. The project rehabilitated and retrofitted the concrete reservoir, disconnected the tank from potable water pipelines, and constructed a new recycled water pipeline (pictured, right) to connect the tank to the existing recycled water system at Quail Gardens Drive. This project will substantially increase recycled water storage, improving service reliability, operational efficiency, and water pressure for customers. The construction phase is anticipated to be completed by Summer 2026, with improvements to address unanticipated leaks in the concrete floor and inlet/outlet piping.



A total budget of \$5.8 million has been appropriated for the pipeline and tank refurbishment projects that are fully funded through the recycled water program. The project(s) have qualified for up to \$2 million in state and federal grant funding.

## STORMWATER CAPTURE AND REUSE

The SEJPA Stormwater Capture and Reuse project (low-flow diversion pictured, right) is intended to reduce pollution to the San Elijo Lagoon and Pacific Ocean and capture stormwater to augment supply to the recycled water system. The project will also improve site drainage to manage runoff and align with industrial stormwater permit requirements. The project scope includes infrastructure to divert stormwater from the Regional Stormwater Channel and direct onsite drainage to a desilting basin and associated conveyance to capture and recycle approximately 6 million gallons per year. A total budget of \$1.71 million has been appropriated for this capital project. The project will receive significant grant funding of up to \$1.5 million to offset project costs, with the remainder funded equally by the recycled water and wastewater programs. This project includes elements not completed with the Water Campus Improvement project and was completed in Summer 2025. No further capital appropriations are budgeted.



## LOMAS SANTA FE BOOSTER PUMP STATION

The Lomas Santa Fe Booster Pump Station provides recycled water service to large customers within the Solana Beach service area. The facility, constructed in 2000 with a peak capacity of 3,000 gallons per minute, has been identified through recent condition assessments and operational experience as a priority for rehabilitation and upgrades.

SEJPA is developing a phased capital project to replace aging controls and electrical systems and to rehabilitate or replace key pumping and mechanical components. The adopted recycled water rate structure anticipates approximately \$750,000 for this work.

## RECYCLED WATER VALVE REPLACEMENTS

The recycled water distribution system, originally constructed in the early 2000s, includes pipelines located primarily within public rights-of-way. Mainline and air release valves are critical for isolating pipelines during maintenance and protecting the system from air accumulation during operation.

Approximately 35 valves have been identified as being at or near the end of their service life and are no longer reliably operable. To address these needs, SEJPA is developing a phased valve replacement program totaling approximately \$420,000, with design underway for the highest priority locations targeted for replacement over the next year.

## TREATMENT PLANT ASSET REPLACEMENTS

As the recycled water treatment facilities age, individual asset replacements are completed and capitalized in accordance with SEJPA policy. In the near term, this includes replacement of two microfiltration feed pumps, chemical tank(s), and obsolete process control and electrical equipment.

## *WATER CAMPUS FIRE RISK REDUCTION PROGRAM*

SEJPA is initiating a phased, multi-year program to reduce fire risk within the designated Open Space areas surrounding the Water Campus. A vegetation survey completed in conjunction with the Facility Plan identified areas of non-native and invasive vegetation, as well as accumulated dead and dry plant material, recommended for removal. The program will focus on targeted removal of invasive species and hazardous vegetation, followed by re-establishment of native, drought-tolerant habitats along exposed slope areas.

This program will reduce fire risk exposure to SEJPA facilities and adjacent properties, while also supporting SEJPA's ongoing obligations to manage Open Space areas in accordance with local and state fire management policies and environmental stewardship objectives. Work will be implemented in phases over multiple years to align with available funding and maintenance resources.

## *CAPITAL PROGRAM DELIVERY COSTS*

San Elijo typically contracts out professional services for project delivery including design (engineers and architects), and consultant construction management and inspection. These soft costs can typically range from 20 to 35%, depending on project complexity and duration. Project development, planning, administration and management over the project delivery life cycle requires dedicated attention from SEJPA's management, engineering, O&M, and administrative team members. SEJPA typically budgets staff time at 10 to 15% of the total project cost which for FY 2026-27 equates to approximately \$570,000.

# DEBT SERVICE

## WASTEWATER TREATMENT DEBT SERVICE AND INFRASTRUCTURE CREDITS

### 2017 CLEAN WATER REVENUE BONDS

SEJPA issued revenue bonds in July 2017 to fund a series of wastewater, ocean outfall, and recycled water projects. The bond included a face value of \$22.115 million, plus a premium less expense of \$1.797 million netting \$23.912 million received with a true interest cost of 3.39% over 30 years. The FY 2025-26 payments will include both interest and principal: \$388,163 interest and \$280,000 principal for each Member Agency. The estimated balance as of June 30, 2026, will be \$18,760,000. The scheduled payoff date is March 2047.

### SAN DIEGO GAS & ELECTRIC TURBO BLOWER LOAN

In July 2017, SEJPA and San Diego Gas & Electric (SDG&E) entered into an On-Bill Financing Loan Agreement to fund the Blower Replacement Project. This project replaced three 125-hp multi-stage centrifugal blowers that were installed in 1991 with substantially more efficient turbo blowers. This replacement project resulted in a \$533,883 loan from SDG&E with 120 monthly payments of \$4,449 with no interest. The resulting annual cost savings from the installation of more energy-efficient equipment roughly equals the annual finance expense. The estimated balance as of June 30, 2026, will be \$71,185. The scheduled payoff date is October 2027.

### DEL MAR WASTEWATER INFRASTRUCTURE CREDIT

Although not reflected as debt of SEJPA, in July 2014, SEJPA and the City of Del Mar entered into an agreement to connect the City of Del Mar to SEJPA’s water reclamation facilities. The project entailed connecting Del Mar’s 21<sup>st</sup> Street wastewater pump station to the Cedros trunk sewer, which would allow Del Mar’s wastewater to flow to SEJPA’s water campus for treatment and recycling. The costs of constructing a connecting pipeline of approximately 6,200 linear feet, including manholes and valves, totaled \$1,623,370 when completed in 2016. Per the agreement with Del Mar, who funded the project, SEJPA agreed to provide Del Mar a credit pool against future wastewater O&M costs in the amount of two-thirds the total project costs. The two-thirds credit amount is representative of the City of Encinitas and Solana Beach’s respective one-third share of the costs between the City of Encinitas, City of Solana Beach, and the City of Del Mar. The total amount of future credits equaled \$1,082,247, to be offset each year in an amount not to exceed \$60,000 per year. As of June 30, 2026, the remaining available credits to Del Mar will total \$580,564. It is anticipated that the credits will be fully utilized in fiscal year ending 2036.



### ENCOURAGING RESOURCE RECOVERY

SEJPA is turning waste into wins. By focusing on resource recovery, we reduce climate impact while creating real financial value. Solar power keeps the Water Campus running cleaner, and public EV charging helps drive a lower-emission future. Smarter use of resources means less waste, lower costs, and a stronger bottom line—all while supporting our climate goals.

## *RECYCLED WATER DEBT SERVICE*

### **2023 RECYCLED WATER LOAN**

In May 2023, SEJPA secured a private placement loan in the amount of \$10,120,000 to fund Recycled Water Capital Improvements. The loan has a 4.58% fixed interest rate for a term of 20 years with annual payments ranging from \$778,028 to \$779,039. Debt service for FY 2026-27 on the loan includes interest of \$413,895 and principal repayments of \$365,000 and will be paid through recycled water rates. The estimated balance as of June 30, 2026, will be \$9,128,000. The scheduled payoff date is June 2043.

### **ADVANCED WATER PURIFICATION LOAN**

In November 2011, SEJPA received a private placement loan for the construction of the Advanced Water Purification Facility in the amount of \$2 million at a fixed interest rate of 4.15%. Annual payments of \$148,154 began in 2011 and will continue for 20 years until 2031. Debt service for FY 2026-27 on the loan includes interest of \$28,732 and principal repayments of \$119,421. The outstanding principal balance on June 30, 2026, is estimated to be \$721,893.

### **SFID PIPELINE LOAN**

In 2013, SEJPA entered into an agreement with the Santa Fe Irrigation District to purchase a recycled water distribution pipeline for \$526,149 with an initial down payment of \$50,000 and annual interest between 1.0% and 2.5% based on the Local Agency Investment Fund (LAIF) rate. The repayment schedule is \$450 per acre foot of water delivered through the pipeline. The outstanding principal balance as of June 30, 2026, is estimated to be \$162,203. The budgeted payment amount is based on 90 acre-feet delivered through the pipeline in FY 2026-27.

### **SOLANA BEACH PIPELINE LOAN**

In 2020, SEJPA entered into an agreement with the City of Solana Beach to purchase a recycled water distribution pipeline for \$1,191,652 with no annual interest and \$478,319 of the reimbursement through water sales. Other sources of funds for reimbursement will be a combination of the cash value of services to be provided by SEJPA and actual grants received. In FY 2022-23, \$600,000 of grant funding was reimbursed to Solana Beach. The repayment schedule is \$450 per acre foot of water delivered through the pipeline. The outstanding principal balance as of June 30, 2026, is estimated to be \$392,234. The budgeted payment amount is based on an expected 23 acre-feet delivered through the pipeline in FY 2026-27.

## DEBT SERVICE SUMMARY

	Actual 2023-24	Actual 2024-25	Estimated Actual 2025-26	Adopted Budget 2025-26	Recommended Budget 2026-27
<b>Wastewater Debt Service</b>					
2017 Clean Water Revenue Bonds					
Principal	\$ 490,000	\$ 510,000	\$ 535,000	\$ 535,000	\$ 560,000
Interest	848,175	828,575	803,075	803,075	776,325
Total Debt Service	<u>\$ 1,338,175</u>	<u>\$ 1,338,575</u>	<u>\$ 1,338,075</u>	<u>\$ 1,338,075</u>	<u>\$ 1,336,325</u>
SDG&E Turbo Blower Loan					
Principal	\$ 53,388	\$ 53,388	\$ 53,388	\$ 53,388	\$ 53,388
Interest	-	-	-	-	-
Total Loan Payment	<u>\$ 53,388</u>	<u>\$ 53,388</u>	<u>\$ 53,388</u>	<u>\$ 53,388</u>	<u>\$ 53,388</u>
Total Wastewater Debt Service					
Principal	\$ 543,388	\$ 563,388	\$ 588,388	\$ 588,388	\$ 613,388
Interest	848,175	828,575	803,075	803,075	776,325
Total Debt Service	<u>\$ 1,391,563</u>	<u>\$ 1,391,963</u>	<u>\$ 1,391,463</u>	<u>\$ 1,391,463</u>	<u>\$ 1,389,713</u>
<b>Recycled Water Debt Service</b>					
2023 Recycled Water Loan					
Principal	\$ 310,000	\$ 333,000	\$ 349,000	\$ 349,000	\$ 365,000
Interest	468,982	445,497	430,039	430,039	413,895
Total Debt Service	<u>\$ 778,982</u>	<u>\$ 778,497</u>	<u>\$ 779,039</u>	<u>\$ 779,039</u>	<u>\$ 778,895</u>
Advanced Water Purification Loan					
Principal	\$ 105,576	\$ 110,003	\$ 114,615	\$ 114,615	\$ 119,421
Interest	42,577	38,151	33,539	33,539	28,732
Total Debt Service	<u>\$ 148,153</u>	<u>\$ 148,154</u>	<u>\$ 148,154</u>	<u>\$ 148,154</u>	<u>\$ 148,153</u>
SFID Pipeline Loan					
Principal	\$ 24,790	\$ 41,569	\$ 40,500	\$ 40,500	\$ 40,500
Interest	6,344	5,411	6,000	6,000	5,400
Total Debt Service	<u>\$ 31,134</u>	<u>\$ 46,980</u>	<u>\$ 46,500</u>	<u>\$ 46,500</u>	<u>\$ 45,900</u>
Solana Beach Pipeline Loan					
Principal	\$ 5,800	\$ 8,010	\$ 10,350	\$ 10,350	\$ 10,350
Interest	-	-	-	-	-
Total Debt Service	<u>\$ 5,800</u>	<u>\$ 8,010</u>	<u>\$ 10,350</u>	<u>\$ 10,350</u>	<u>\$ 10,350</u>
Total Water Reclamation Debt Service					
Principal	\$ 446,166	\$ 492,582	\$ 514,465	\$ 514,465	\$ 535,271
Interest	517,904	489,059	469,578	469,578	448,027
Total Debt Service	<u>\$ 964,069</u>	<u>\$ 981,641</u>	<u>\$ 984,043</u>	<u>\$ 984,043</u>	<u>\$ 983,298</u>
<b>Total Debt Service</b>					
Total All Debt Service					
Principal	\$ 989,554	\$ 1,055,970	\$ 1,102,853	\$ 1,102,853	\$ 1,148,659
Interest	1,366,079	1,317,634	1,272,653	1,272,653	1,224,352
Total Debt Service	<u>\$ 2,355,632</u>	<u>\$ 2,373,604</u>	<u>\$ 2,375,506</u>	<u>\$ 2,375,506</u>	<u>\$ 2,373,011</u>

# CLASSIFICATION AND SALARY SCHEDULE

## Pending Adoption of SEJPA's Classification and Compensation Study

# ORGANIZATIONAL CHART

